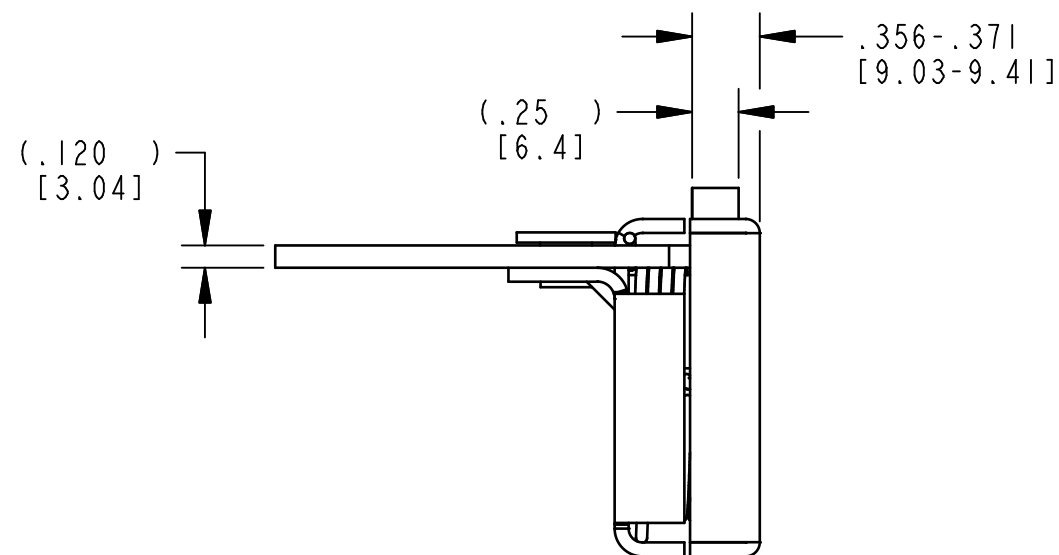
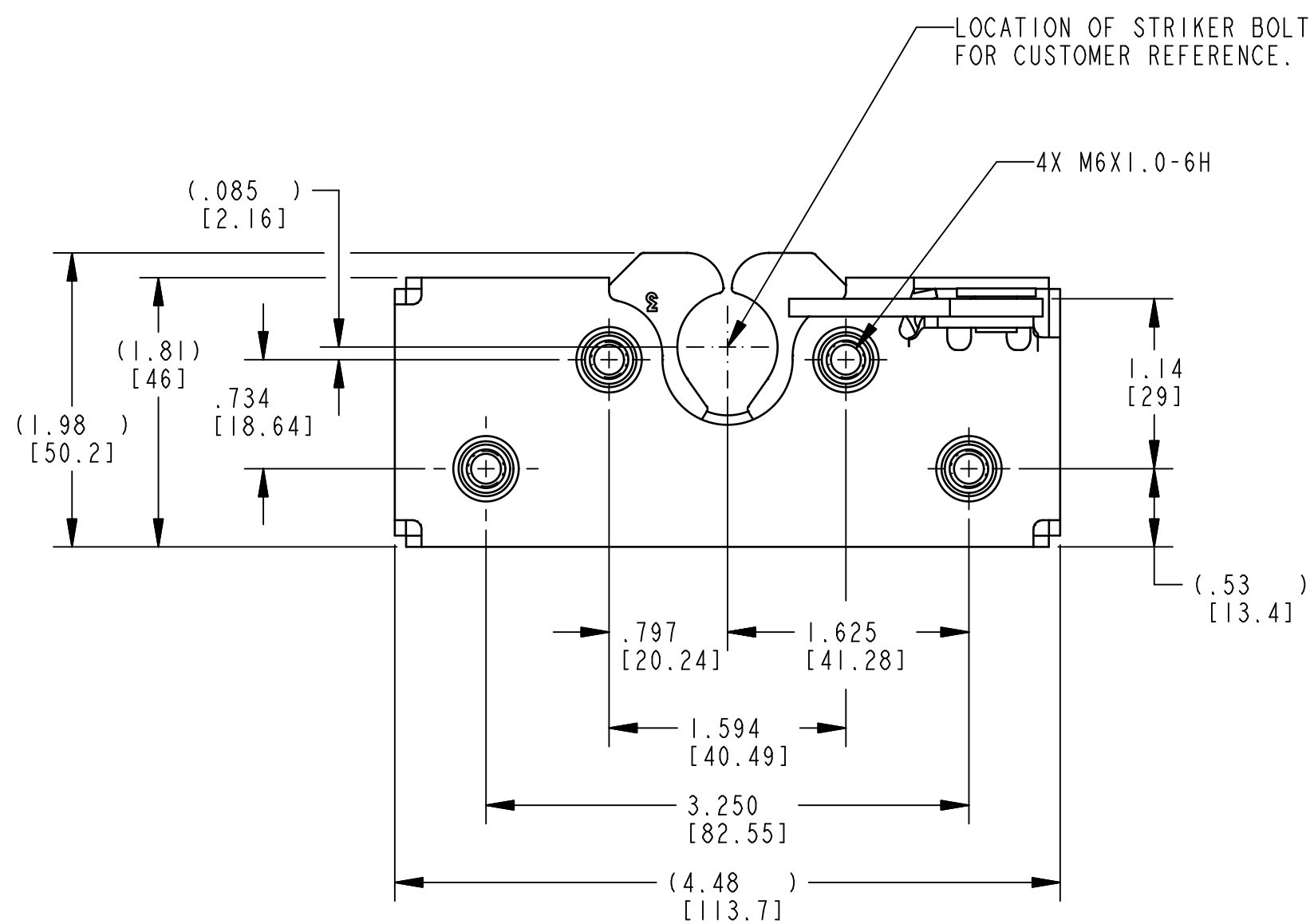



NOTES:

- 1 ASSEMBLY IDENTIFIED WITH PART NUMBER AND DATE CODE, APPROXIMATELY AS SHOWN, OR IN OTHER APPROVED LOCATIONS AS OUTLINED IN ES-121. ORIENTATION OF THE RIVET CONTAINING PART NUMBER AND DATE CODE NOT IMPORTANT.
2. ASSEMBLY COMPLIES WITH STRENGTH REQUIREMENTS OF SAE STANDARD J839.
3. TIGHTEN MOUNTING FASTENERS TO THE FASTENER MANUFACTURER'S RECOMMENDED TORQUE VALUE; HOWEVER, DO NOT EXCEED 120 IN-LBS [13.6N-m].
4. WHEN MOUNTING LATCH, MOUNTING HOLE SIZE NOT TO EXCEED Ø.312 [7.92].
5. DIMENSIONS IN [ ] ARE IN MILLIMETERS FOR REFERENCE ONLY.
6. USE WITH TRIMARK'S Ø.675 [17.15] STRIKER BOLT.
- 7 CONTACT TO RELEASE POSITION APPROXIMATELY 5.0°.
- 8 CONTACT TO MAX TRAVEL APPROXIMATELY 8.8°.



**PRODUCT SUPPORT DRAWING**  
 Individual part dimensions are for reference only. Refer to individual part drawings for complete dimensions and specifications.

SPECIFICATION	DESCRIPTION	ITEM	PART NUMBER	DESCRIPTION	QUANTITY	
DRAWN BY: MLH 4/25/02 CHECKED BY: JRS 4/25/02 DESIGN ENG: GCL MFG. ENG: QUALITY ENG:	MATERIAL		 500 Bailey Avenue New Hampton, Iowa 50659 U.S.A. Tel: 641-394-3188 Fax: 641-394-2392			
TOLERANCES UNLESS OTHERWISE SPECIFIED ASME Y14.5M-1994 DIMENSIONS ANGLES X.X ±.1 X° ±3° X.XX ±.03 X.X° ±1.0° X.XXX ±.010 X.XX° ±.50°		HEAT TREAT				
FINISH PROJECT CUSTOMER CUSTOMER PART NUMBER		PART NAME DBLRTR, RH, 6MM, 2PT				
INCH [METRIC] C		SIZE PART WEIGHT SURFACE AREA PRODUCT CODE E01 (050-0100)				
REPORT ERRORS TO ENGINEERING DEPARTMENT DO NOT SCALE DRAWING		SCALE REVISION PART NUMBER FULL A PR18611		This drawing and the information contained herein is the property of TriMark Corporation and shall not be used for any purpose without our written consent.		