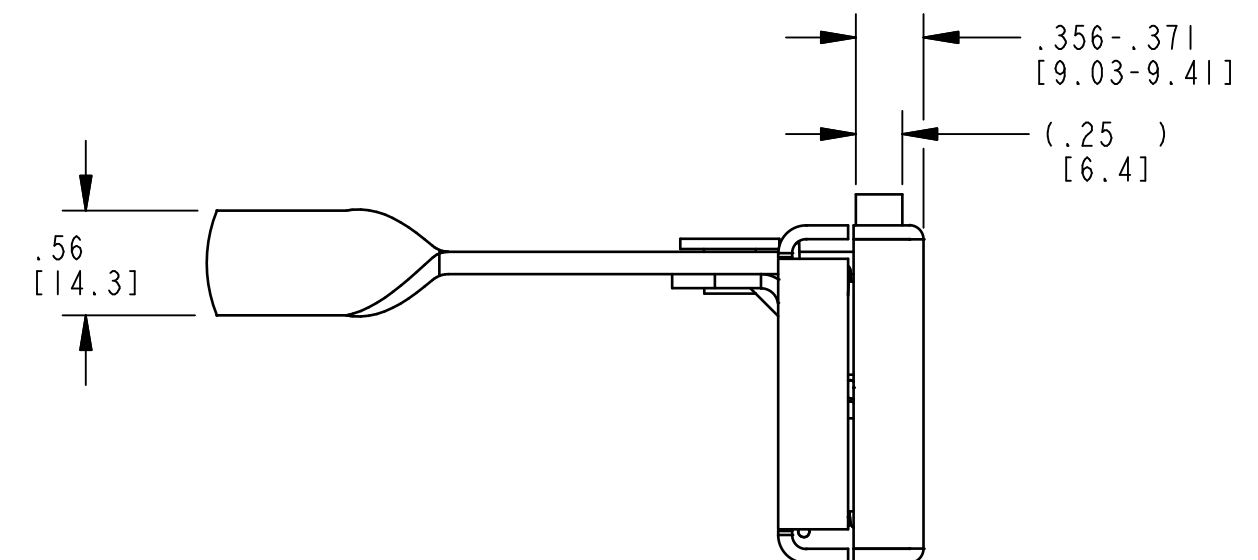
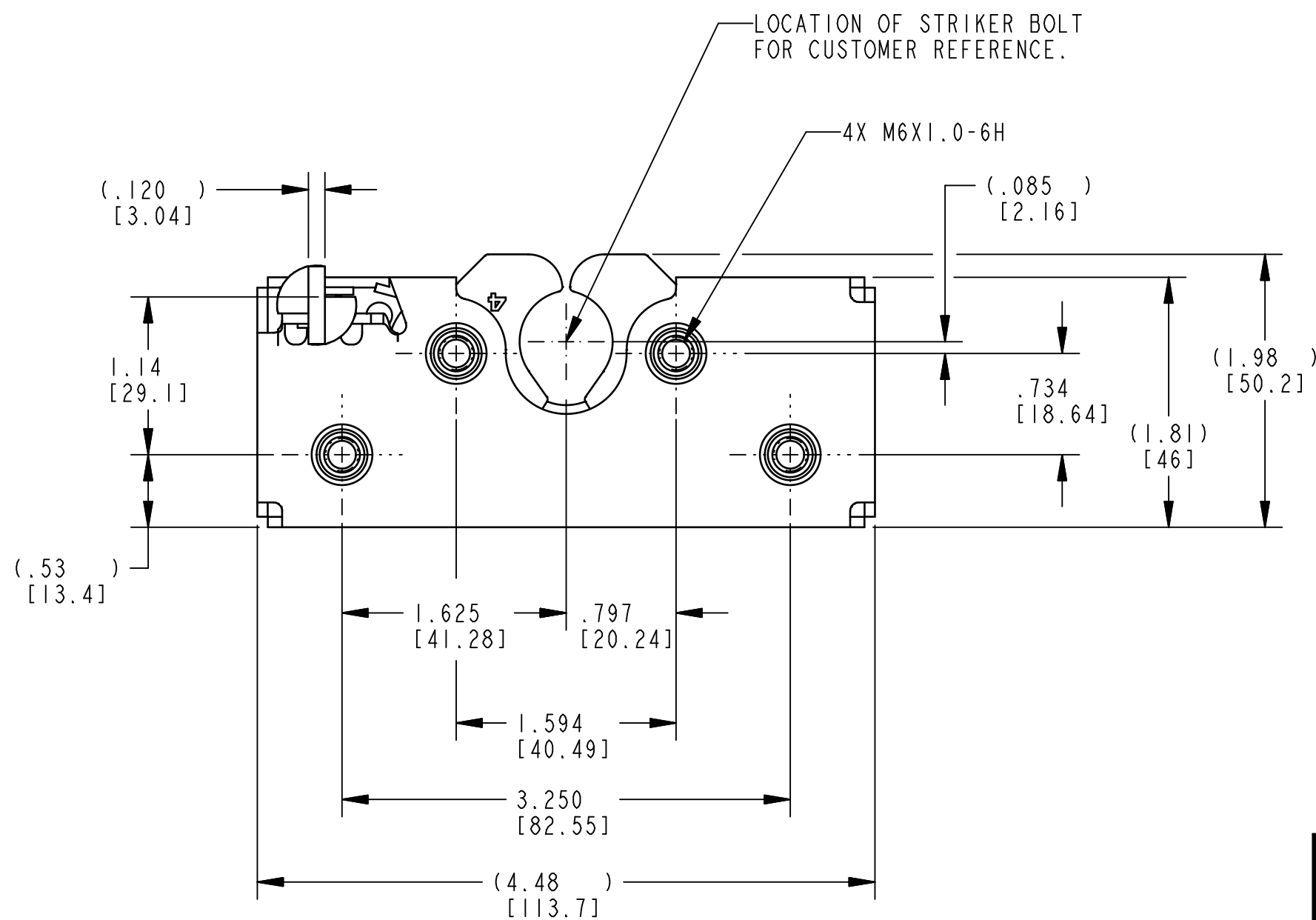



NOTES:

- 1. ASSEMBLY IDENTIFIED WITH PART NUMBER AND DATE CODE, APPROXIMATELY AS SHOWN, OR IN OTHER APPROVED LOCATIONS AS OUTLINED IN ES-121. ORIENTATION OF THE RIVET CONTAINING PART NUMBER AND DATE CODE NOT IMPORTANT.
- 2. ASSEMBLY COMPLIES WITH STRENGTH REQUIREMENTS OF SAE STANDARD J839.
- 3. TIGHTEN MOUNTING FASTENERS TO THE FASTENER MANUFACTURER'S RECOMMENDED TORQUE VALUE; HOWEVER, DO NOT EXCEED 120 IN-LBS [13.6N-m].
- 4. WHEN MOUNTING LATCH, MOUNTING HOLE SIZE NOT TO EXCEED $\varnothing .312$ [7.92].
- 5. DIMENSIONS IN [] ARE IN MILLIMETERS FOR REFERENCE ONLY.
- 6. USE WITH TRIMARK'S $\varnothing .675$ [17.15] STRIKER BOLT.
- 7. CONTACT TO RELEASE POSITION APPROXIMATELY 5.0°.
- 8. CONTACT TO MAX TRAVEL APPROXIMATELY 8.8°.



PRODUCT SUPPORT DRAWING
 Individual part dimensions are for reference only. Refer to individual part drawings for complete dimensions and specifications.

SPECIFICATION	DESCRIPTION	ITEM	PART NUMBER	DESCRIPTION	QUANTITY
DRAWN BY: MLH 4/25/02	MATERIAL:	 500 Bailey Avenue New Hampton, Iowa 50659 U.S.A. Tel: 641-394-3188 Fax: 641-394-2392			
CHECKED BY: JRS 4/25/02	HEAT TREAT:				
DESIGN ENG: GCL	FINISH:				
MFG. ENG:	PROJECT: CUSTOMER: CUSTOMER PART NUMBER:				
QUALITY ENG:	TOLERANCES UNLESS OTHERWISE SPECIFIED ASME Y14.5M-1994 DIMENSIONS: X.X ±.1 X° ±3° X.XX ±.03 X.X° ±1.0° X.XXX ±.010 X.XX° ±.50°	This drawing and the information contained herein is the property of TriMark Corporation and shall not be used for any purpose without our written consent.	PART NAME: DBLRTR LH 6MM FINGREL		
INCH [METRIC]		SIZE: C	PART WEIGHT:	SURFACE AREA:	PRODUCT CODE: E01 (050-0100)
		REPORT ERRORS TO ENGINEERING DEPARTMENT		DO NOT SCALE DRAWING	
		SCALE: FULL	REVISION: A	PART NUMBER: PRI2181	