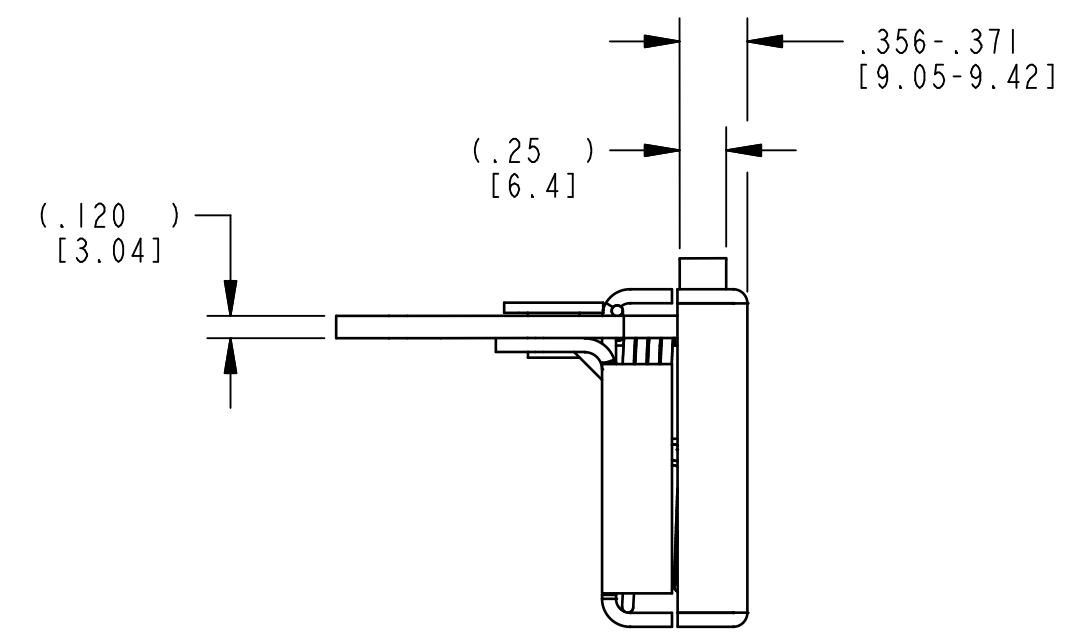
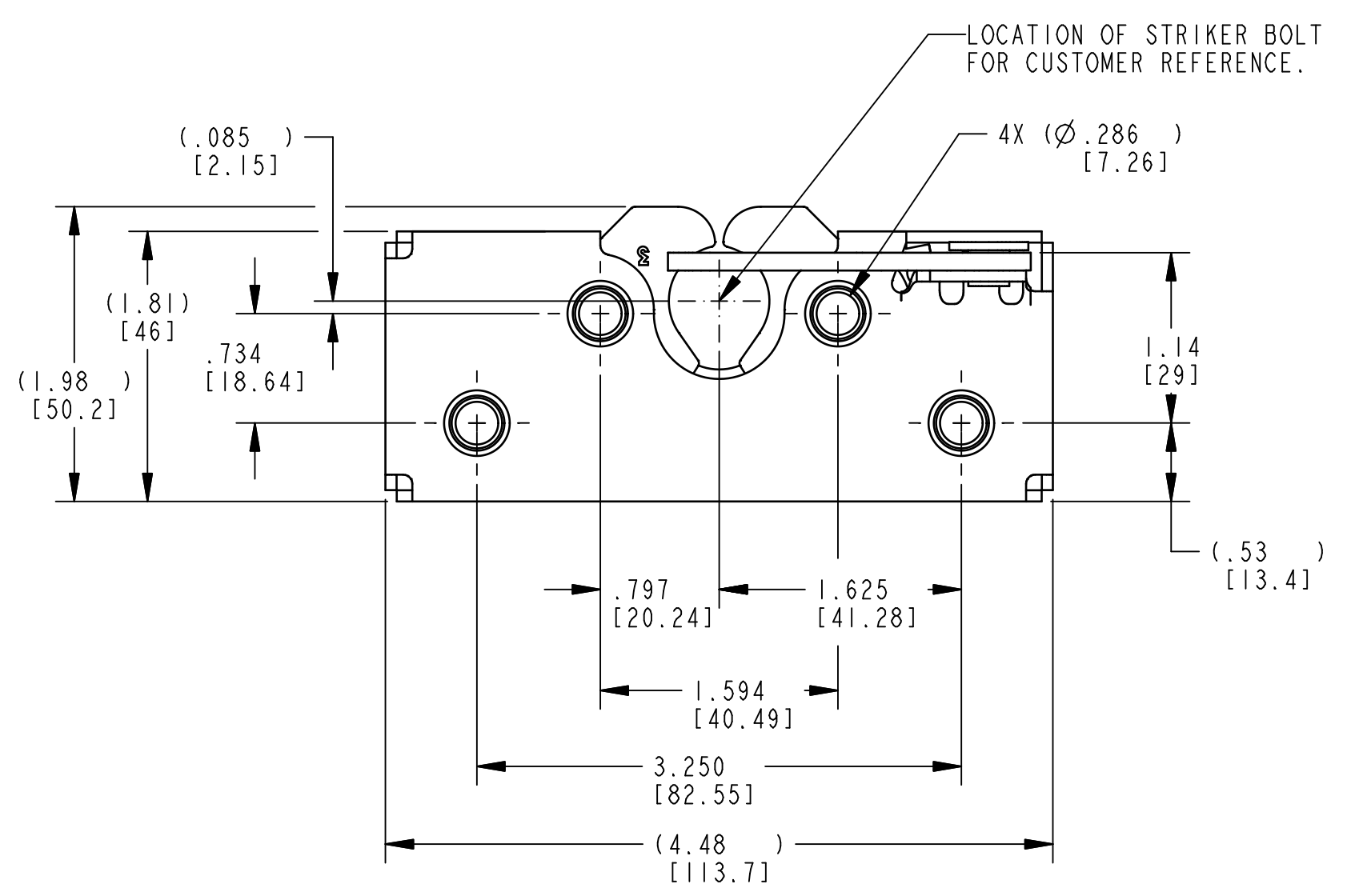



- NOTES:
- ASSEMBLY IDENTIFIED WITH PART NUMBER AND DATE CODE, APPROXIMATELY AS SHOWN, OR IN OTHER APPROVED LOCATIONS AS OUTLINED IN ES-121. ORIENTATION OF THE RIVET CONTAINING PART NUMBER AND DATE CODE NOT IMPORTANT.
 - ASSEMBLY COMPLIES WITH STRENGTH REQUIREMENTS OF SAE STANDARD J839.
 - WHEN MOUNTING LATCH, MOUNTING HOLE SIZE NOT TO EXCEED $\phi .312 [7.92]$.
 - DIMENSIONS IN [] ARE IN MILLIMETERS FOR REFERENCE ONLY.
 - USE WITH TRIMARK'S $\phi .675 [17.15]$ STRIKER BOLT.
- 6 FREE TRAVEL.
 7 RELEASE POSITION.
 8 MAXIMUM TRAVEL.
 9 CONTACT POSITION (SHOWN).



PRODUCT SUPPORT DRAWING
 Individual part dimensions are for reference only. Refer to individual part drawings for complete dimensions and specifications.

SPECIFICATION		DESCRIPTION		ITEM	PART NUMBER	DESCRIPTION	QUANTITY		
DRAWN BY	MLH	4/25/02	MATERIAL		 500 Bailey Avenue New Hampton, Iowa 50659 U.S.A. Tel: 641-394-3188 Fax: 641-394-2392 This drawing and the information contained herein is the property of TriMark Corporation and shall not be used for any purpose without our written consent.				
CHECKED BY	JRS	4/25/02	HEAT TREAT						
DESIGN ENG.	GCL		FINISH						
MFG. ENG.			PROJECT					CUSTOMER	CUSTOMER PART NUMBER
QUALITY ENG.			SIZE					PART WEIGHT	SURFACE AREA
TOLERANCES UNLESS OTHERWISE SPECIFIED ASME Y14.5M-1994 DIMENSIONS ANGLES X.X $\pm .1$ X° $\pm 3^\circ$ X.XX $\pm .03$ X.X° $\pm 1.0^\circ$ X.XXX $\pm .010$ X.XX° $\pm .50^\circ$			INCH [METRIC]		REPORT ERRORS TO ENGINEERING DEPARTMENT		DO NOT SCALE DRAWING		
SCALE FULL				REVISION A	PART NUMBER PRI1450				

PART NAME
 ASSY, DBL RTR, RH, .286, L