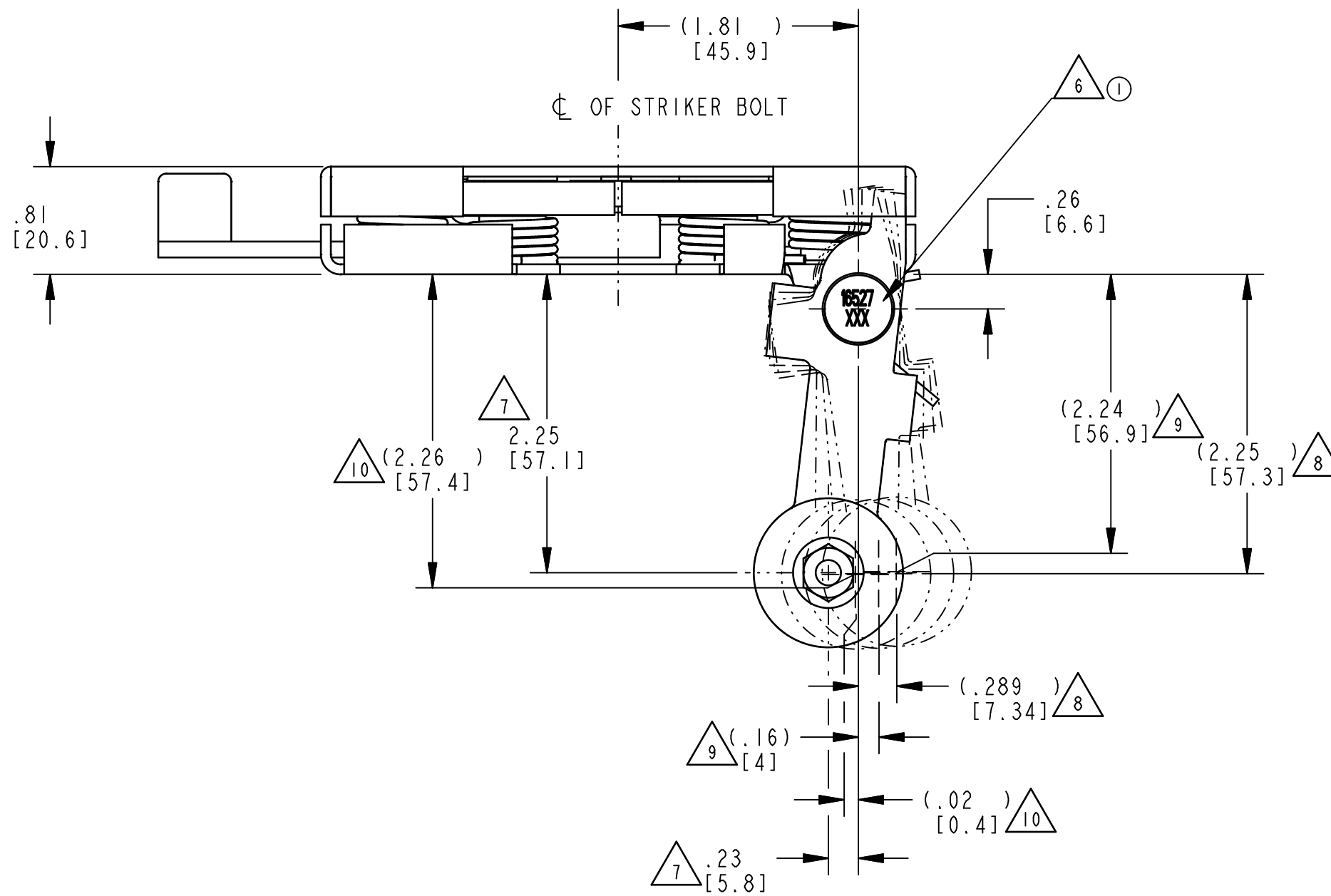


REV.	ECN	BY	CHKD	REVISION
B	PRE-RLSE	DA 11/30/98	BJP 12/1/98	REVISED PART NAME AND VIEWS; 4X M6X1.0-6H WAS 4X 1/4-20 UNC-2B
C	PRE-RLSE	DA 12/2/98	DJZ 12/3/98	REVISED DISPLAY OF VIEWS
D	PRE-RLSE	DFT 2/17/99	BJP 2/17/99	ADDED (.55) AND (.675) DIMS
0	RLSE	DFT 3/2/99	JLB 3/2/99	RELEASED
1	11177	TJN 03/08/00	JRS 03/08/00	REVISED NOTE 6, PROD CODE UPDATED DISPLAY

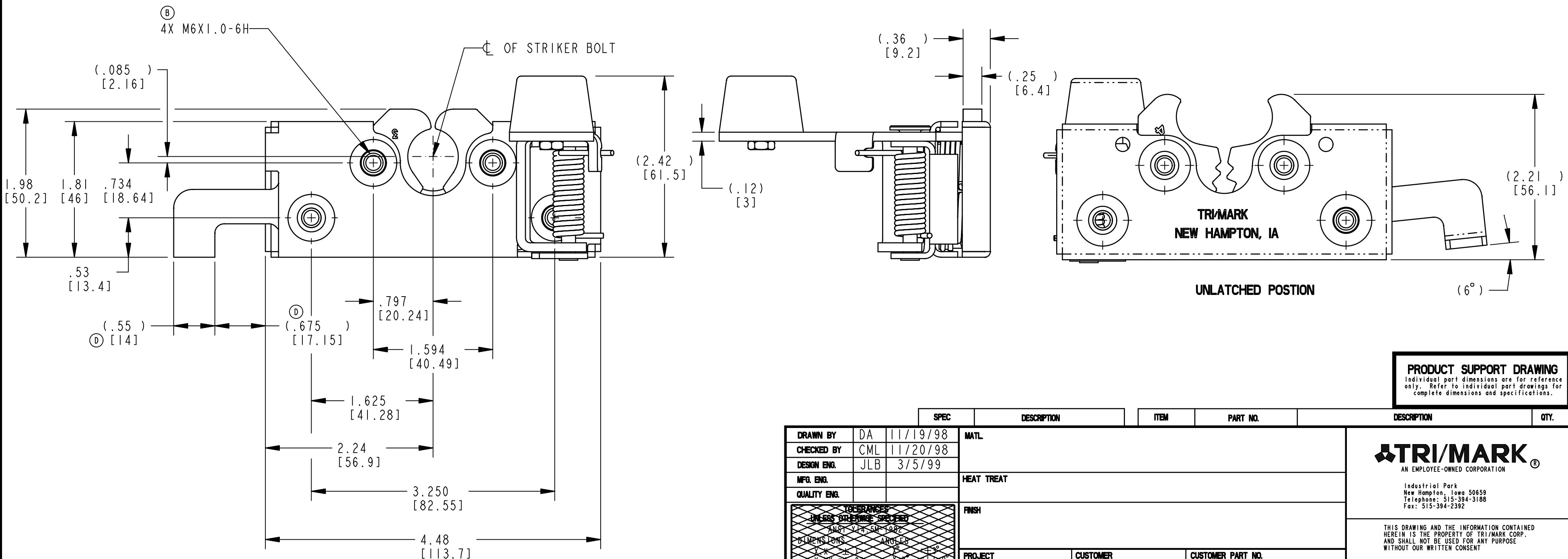


NOTES:

- ASSEMBLY COMPLIES WITH LOAD REQUIREMENTS OF FEDERAL MOTOR VEHICLE SAFETY STANDARD 206 WHEN TESTED IN ACCORDANCE WITH SAE J839.
- MOUNT WITH GRADE 5 FASTENERS PROPERLY TORQUED.
- WHEN MOUNTED TO FRONT PLATE, MOUNTING HOLE SIZE NOT TO EXCEED ϕ .312 [7.92].
- USE WITH TRI/MARK'S ϕ .675 STIKER BOLT.
- DIMENSIONS IN [] ARE IN MILLIMETERS FOR REFERENCE ONLY.

① ⑥ ASSEMBLIES IDENTIFIED WITH PART NUMBER AND DATE CODE, APPROXIMATELY AS SHOWN OR IN OTHER APPROVED LOCATIONS AS OUTLINED IN ES-121. ORIENTATION OF THE RIVET CONTAINING PART NUMBER AND DATE CODE NOT IMPORTANT.

- ⑦ RETURN POSITION (SHOWN).
- ⑧ MAXIMUM TRAVEL.
- ⑨ RELEASE POINT.
- ⑩ CONTACT POSITION.



PRODUCT SUPPORT DRAWING
Individual part dimensions are for reference only. Refer to individual part drawings for complete dimensions and specifications.

SPEC	DESCRIPTION	ITEM	PART NO.	DESCRIPTION	QTY.
DRAWN BY DA 11/19/98	MATL				
CHECKED BY CML 11/20/98	HEAT TREAT				
DESIGN ENG. JLB 3/5/99	FINISH				
MFG. ENG.	PROJECT 98098	CUSTOMER	CUSTOMER PART NO.		
QUALITY ENG.	SIZE C	PART WT.	SURFACE AREA	PROD CODE ① E08 (050-0107)	
	REPORT ERRORS TO ENGINEERING DEPT.		DO NOT SCALE DRAWING	SCALE FULL	REV. 1
				PART NO. PRI6527	

TRI/MARK
AN EMPLOYEE-OWNED CORPORATION
Industrial Park
New Hampton, Iowa 50659
Telephone: 515-394-3188
Fax: 515-394-2392

THIS DRAWING AND THE INFORMATION CONTAINED HEREIN IS THE PROPERTY OF TRI/MARK CORP. AND SHALL NOT BE USED FOR ANY PURPOSE WITHOUT OUR WRITTEN CONSENT.

PART NAME 050-0107, RH, 1 POSN, M6, COAXPVT, FGR, RLSE, YCZ ⑥