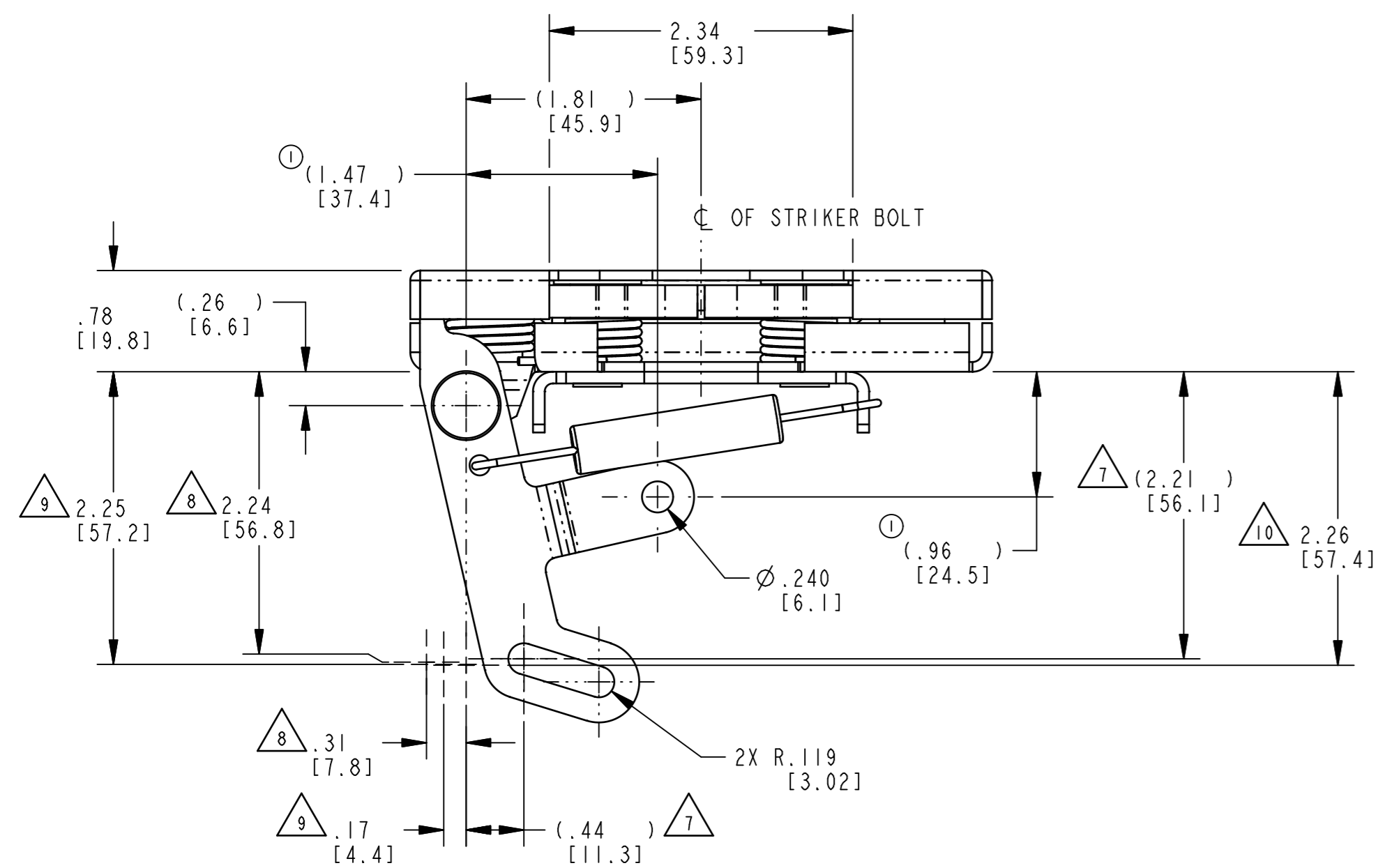
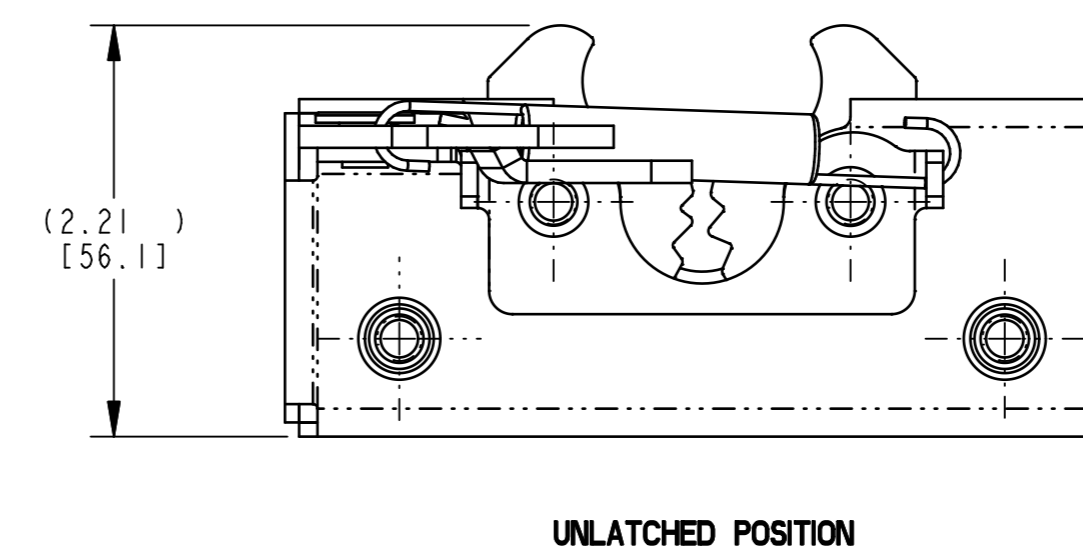
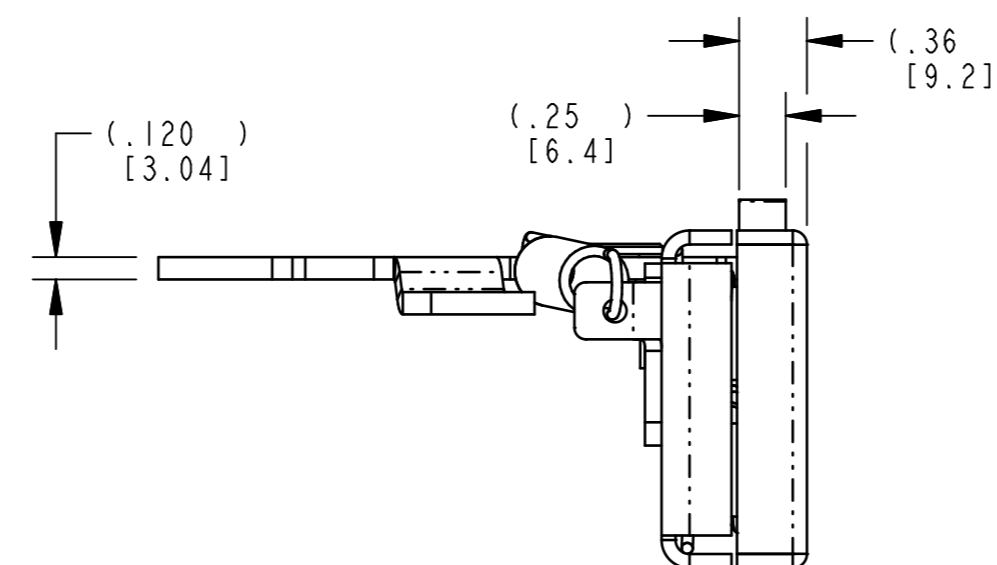
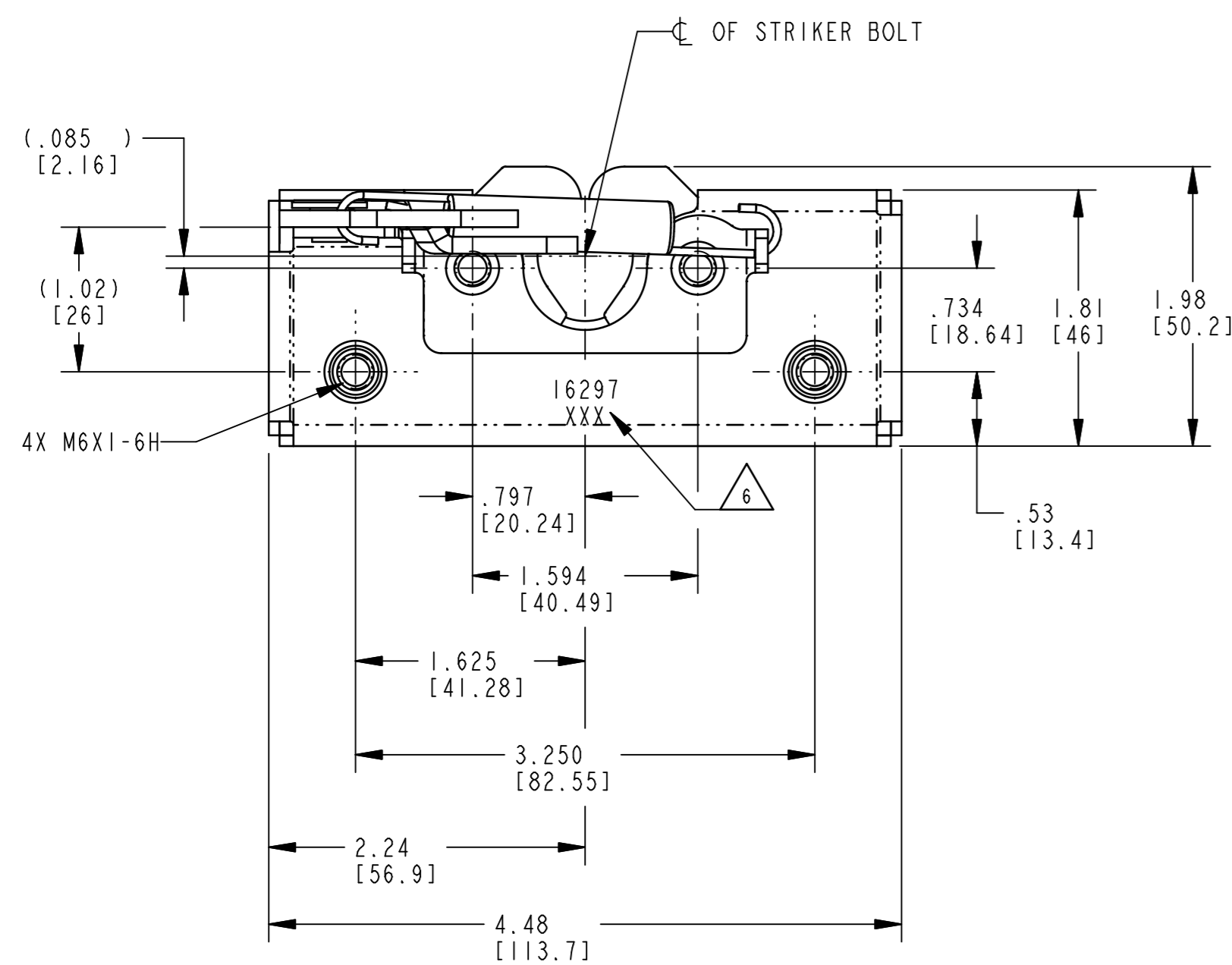


REV.	ECN	BY	CHKD	REVISION
0	RLSE	DA	10/27/98	RELEASED
1	10884	WAE	3/3/99	ADDED (.96), (1.47)



- NOTES:
- ASSEMBLY COMPLIES WITH LOAD REQUIREMENTS OF FEDERAL MOTOR VEHICLE SAFETY STANDARD 206 WHEN TESTED IN ACCORDANCE WITH SAE J839.
 - TORQUE MOUNTING FASTENERS TO 120 IN-LBS [13.3 Nm] MAX.
 - WHEN MOUNTED TO FRONT PLATE, MOUNTING HOLE SIZE NOT TO EXCEED $\varnothing .312$ [7.92].
 - USE WITH TRI/MARK'S $\varnothing .675$ STIKER BOLT.
 - DIMENSIONS IN [] ARE IN MILLIMETERS FOR REFERENCE ONLY.
- △6 TRI/MARK PART NUMBER AND DATE CODE LOCATED APPROXIMATELY AS SHOWN.
 - △7 FREE TRAVEL (SHOWN).
 - △8 MAXIMUM TRAVEL.
 - △9 RELEASE POINT.
 - △10 CONTACT POSITION.



PRODUCT SUPPORT DRAWING
 Individual part dimensions are for reference only. Refer to individual part drawings for complete dimensions and specifications.

SPEC	DESCRIPTION	ITEM	PART NO.	DESCRIPTION	QTY.	
DRAWN BY DA	10/5/98	MATERIAL				TRI/MARK AN EMPLOYEE-OWNED CORPORATION Industrial Park New Hampton, Iowa 50650 Telephone: 515-394-3100 Fax: 515-394-2392
CHECKED BY BJP	10/6/98	HEAT TREAT				
DESIGN ENG. WAE	10/6/98	FINISH				
INFG. ENG.		PROJECT 97057				
QUALITY ENG.		CUSTOMER		CUSTOMER PART NO.		
THIS DRAWING AND THE INFORMATION CONTAINED HEREIN IS THE PROPERTY OF TRI/MARK CORP. AND SHALL NOT BE USED FOR ANY PURPOSE WITHOUT OUR WRITTEN CONSENT.		SIZE	PART WT.	SURFACE AREA	PROD CODE	
FORM 163-210 REV. 1.0 10/15/93		D			050-0100	
REPORT ERRORS TO ENGINEERING DEPT.		DO NOT SCALE DRAWING		SCALE	REV.	
FULL		1		PART NO.	PR16297	