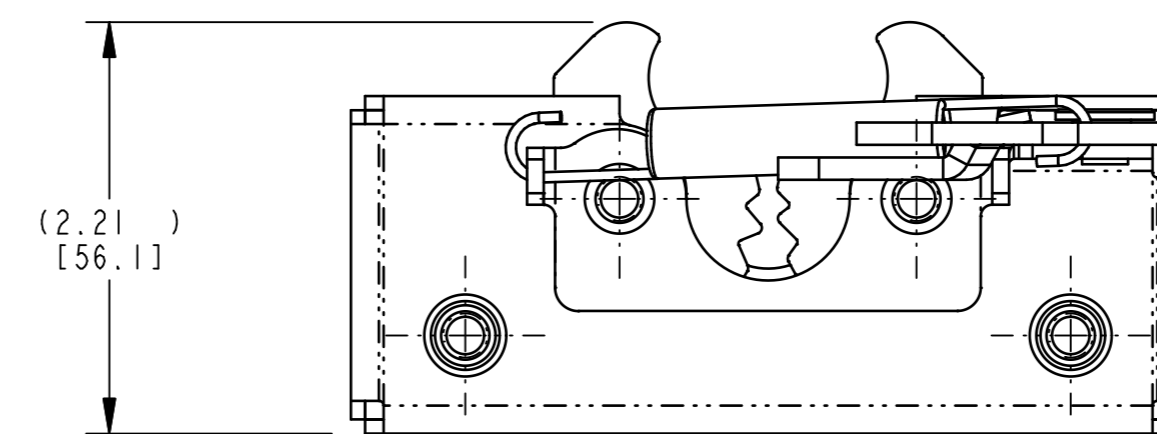
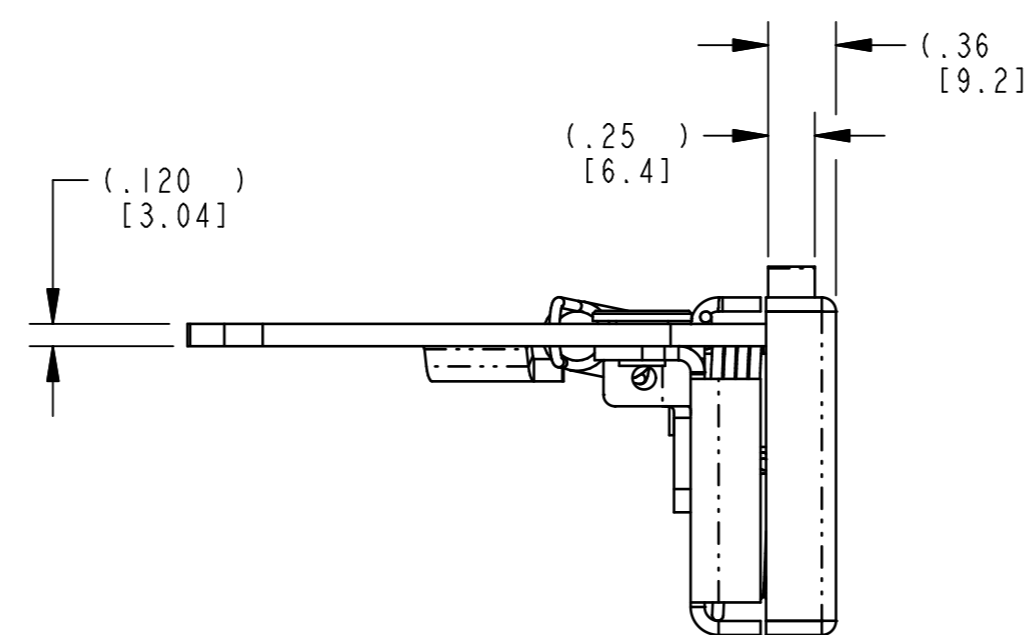
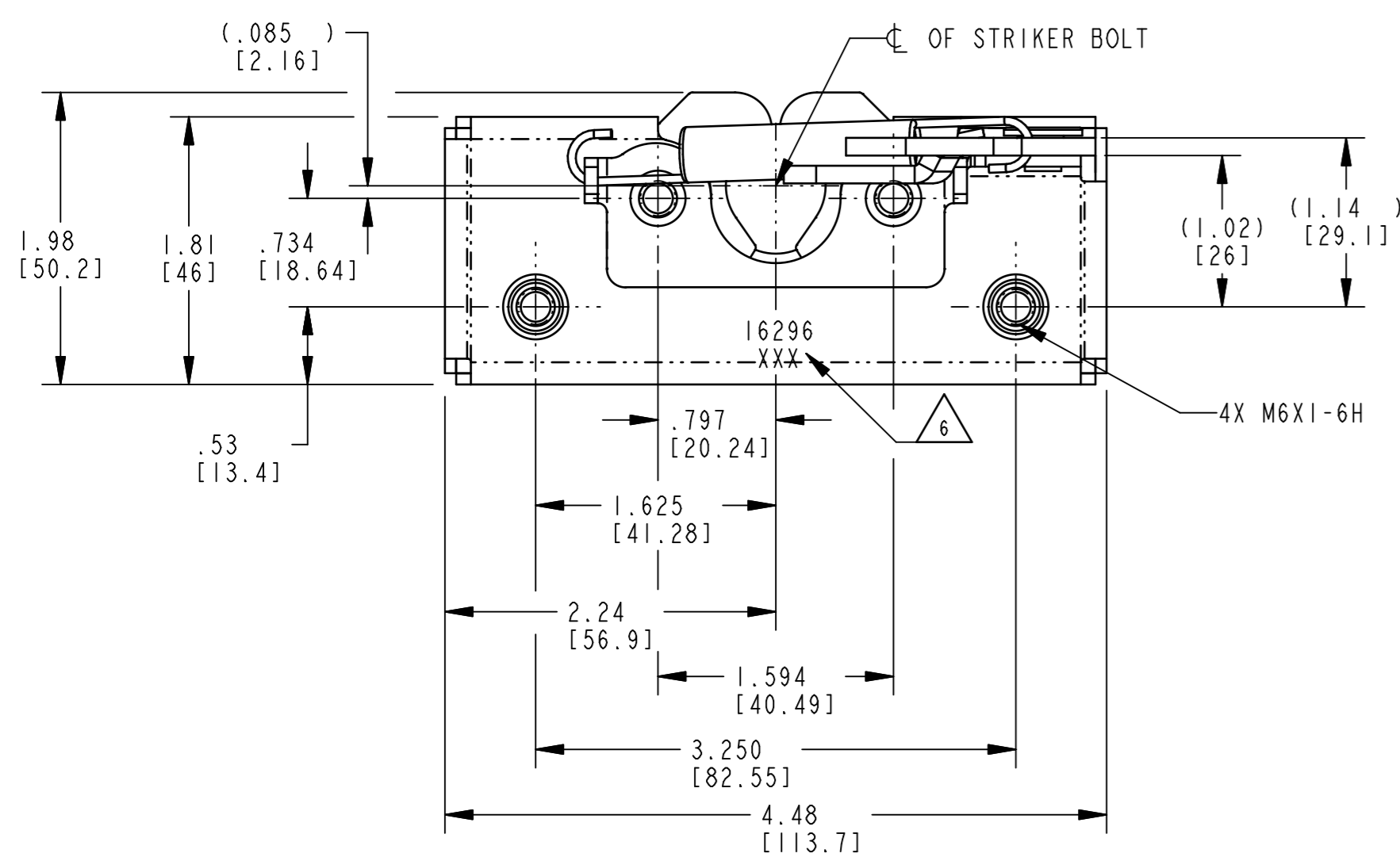
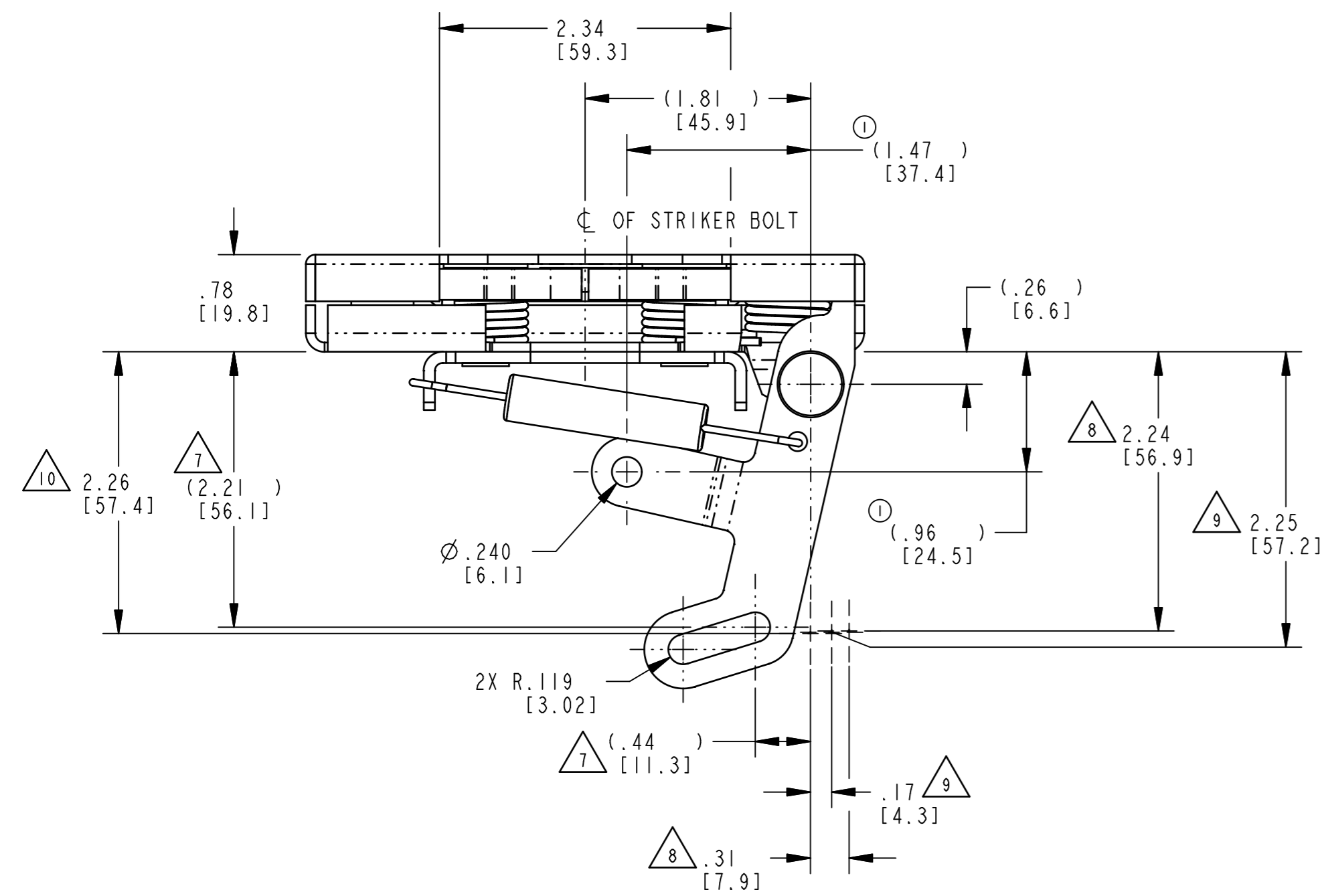


REV.	ECN	BY	CHKD	REVISION
0	RLSE	DA	BJP	RELEASED
1	10884	WAE	BJP	ADDED (.96), (1.47)



UNLATCHED POSITION

NOTES:

- ASSEMBLY COMPLIES WITH LOAD REQUIREMENTS OF FEDERAL MOTOR VEHICLE SAFETY STANDARD 206 WHEN TESTED IN ACCORDANCE WITH SAE J839.
- TORQUE MOUNTING FASTENERS TO 120 IN-LBS [13.3 Nm] MAX.
- WHEN MOUNTED TO FRONT PLATE, MOUNTING HOLE SIZE NOT TO EXCEED ϕ .312 [7.92].
- USE WITH TRI/MARK'S ϕ .675 STIKER BOLT.
- DIMENSIONS IN [] ARE IN MILLIMETERS FOR REFERENCE ONLY.

- 6 TRI/MARK PART NUMBER AND DATE CODE LOCATED APPROXIMATELY AS SHOWN.
- 7 FREE TRAVEL (SHOWN).
- 8 MAXIMUM TRAVEL.
- 9 RELEASE POINT.
- 10 CONTACT POSITION.

PRODUCT SUPPORT DRAWING
Individual part dimensions are for reference only. Refer to individual part drawings for complete dimensions and specifications.

SPEC	DESCRIPTION	ITEM	PART NO.	DESCRIPTION	QTY.
DRAWN BY DA	10/5/98	MATERIAL			
CHECKED BY BJP	10/6/98	HEAT TREAT			
DESIGN ENG. WAE	10/6/98	FINISH			
MFG. ENG.		PROJECT 97057			
QUALITY ENG.		CUSTOMER CUSTOMER PART NO.			
TO BE PLANNED UNLESS OTHERWISE SPECIFIED DIMENSIONS ARE IN INCHES DIMENSIONS IN MILLIMETERS ARE FOR REFERENCE ONLY DECIMALS ARE TO BE ROUNDED UP OR DOWN AS SHOWN DIMENSIONS ARE TO BE TAKEN TO THE CENTER UNLESS OTHERWISE SPECIFIED DIMENSIONS ARE TO BE TAKEN TO THE SURFACE UNLESS OTHERWISE SPECIFIED DIMENSIONS ARE TO BE TAKEN TO THE CENTER UNLESS OTHERWISE SPECIFIED DIMENSIONS ARE TO BE TAKEN TO THE SURFACE UNLESS OTHERWISE SPECIFIED		SIZE PART WT. SURFACE AREA PROD CODE D 050-0100		SCALE REV. PART NO. FULL 1 PR16296	
FORM 163-210 REV. 1.0 10/15/93 REPORT ERRORS TO ENGINEERING DEPT. DO NOT SCALE DRAWING					

TRI/MARK
AN EMPLOYEE-OWNED CORPORATION

Industrial Park
New Hampton, Iowa 50650
Telephone: 515-394-3100
Fax: 515-394-2392

THIS DRAWING AND THE INFORMATION CONTAINED HEREIN IS THE PROPERTY OF TRI/MARK CORP. AND SHALL NOT BE USED FOR ANY PURPOSE WITHOUT OUR WRITTEN CONSENT.

PART NAME 050-0100, RH, 2POSN, M6, 2PT, OFS, RTN, YCZ