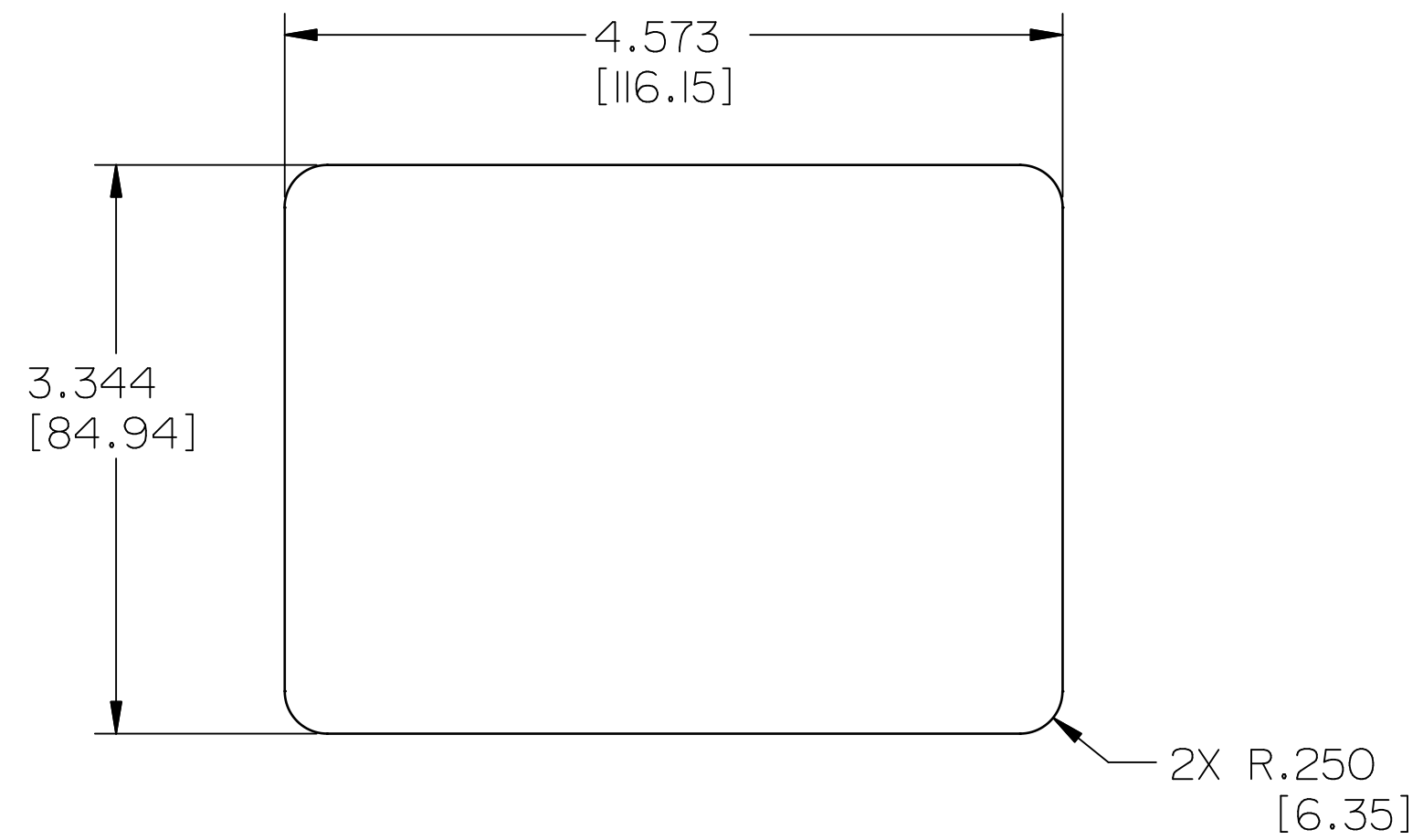
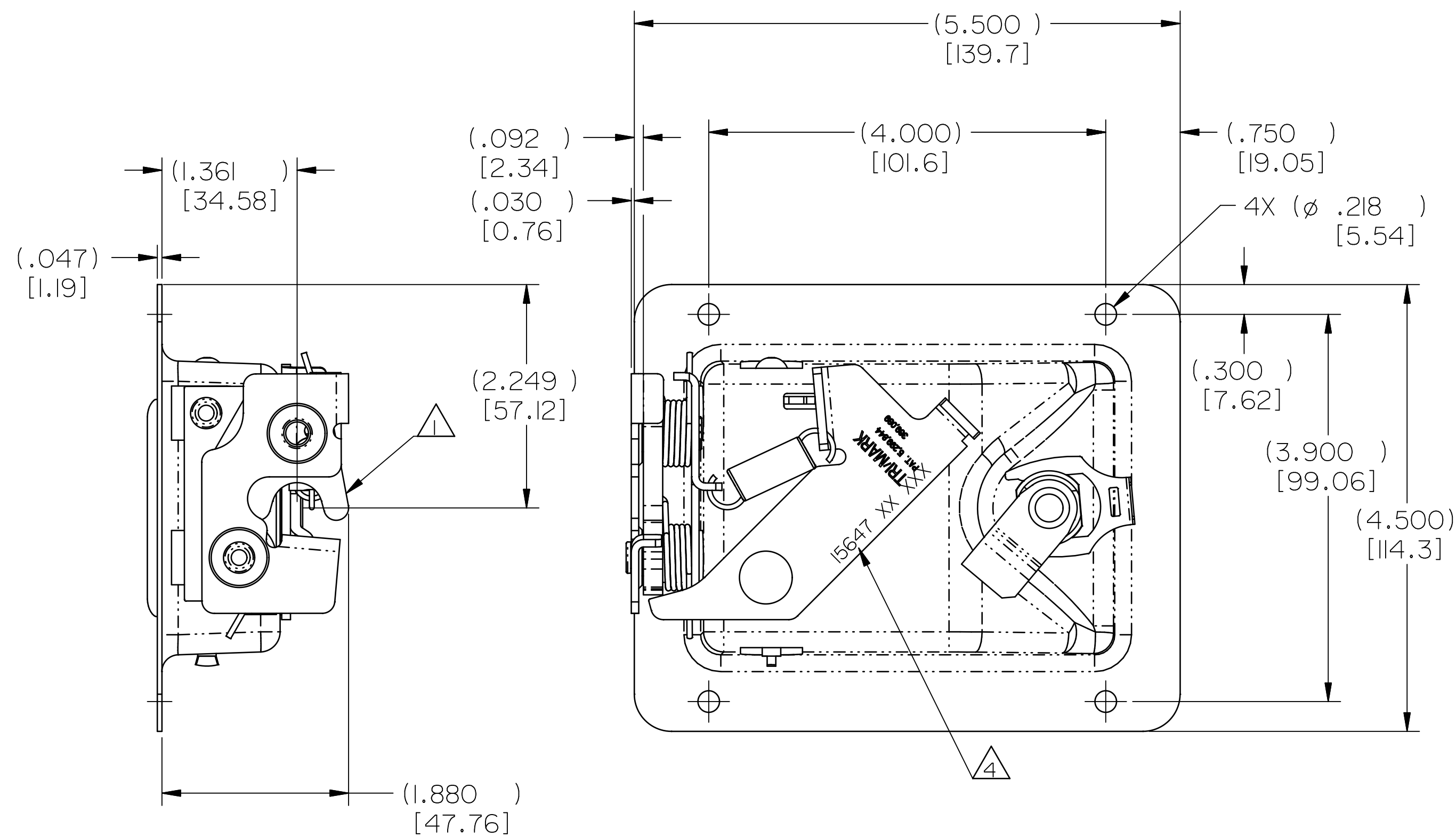
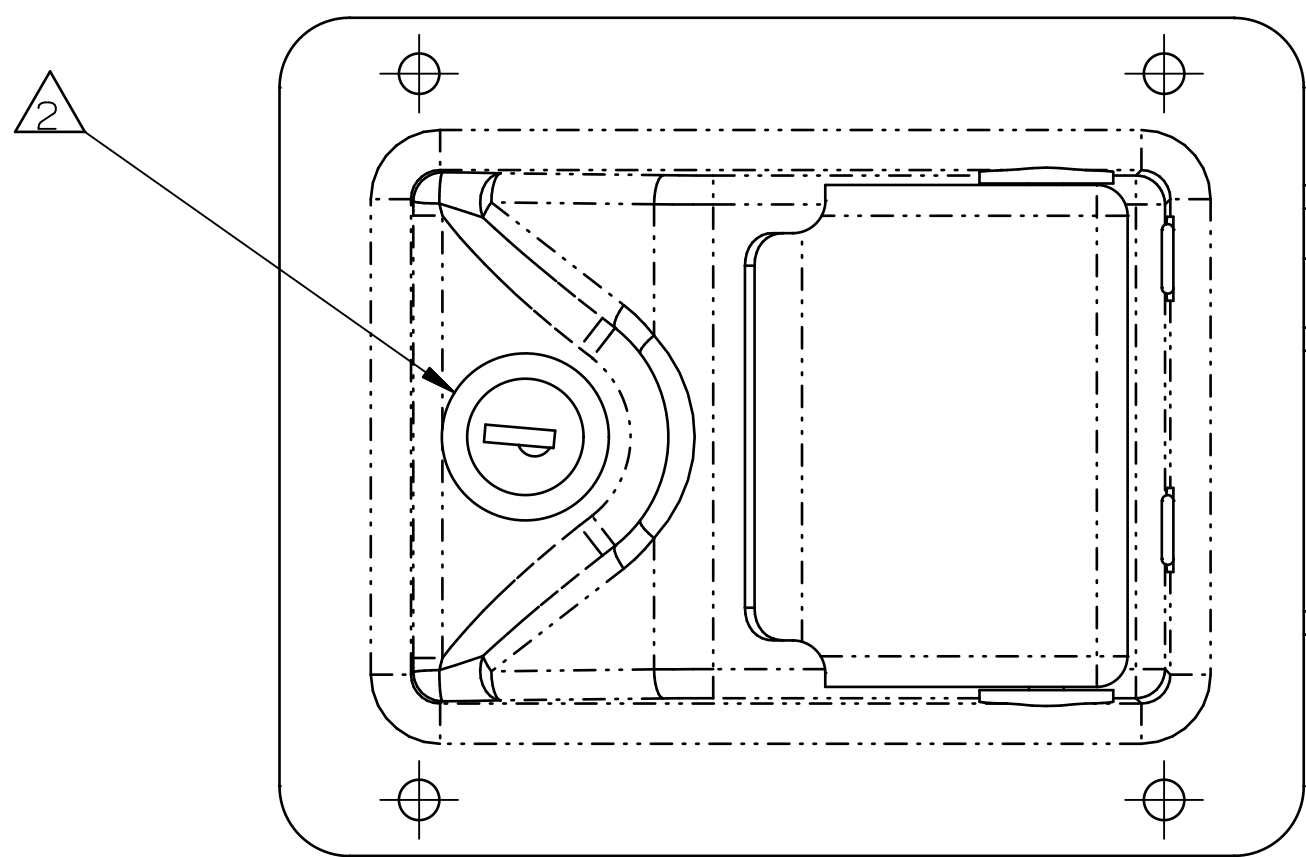


| PART NO. | FINISH | KEY CODE |
|----------|---|----------|
| I6268-01 | STAINLESS STEEL NO FINISH | CH501 |
| I6268-02 | STAINLESS STEEL NO FINISH | CH502 |
| I6268-03 | STAINLESS STEEL NO FINISH | CH503 |
| I6268-04 | STAINLESS STEEL NO FINISH | CH504 |
| I6268-05 | STAINLESS STEEL NO FINISH | CH505 |
| I6268-06 | STAINLESS STEEL NO FINISH | CH506 |
| I6268-07 | STAINLESS STEEL NO FINISH | CH507 |
| I6268-08 | STAINLESS STEEL NO FINISH | CH508 |
| I6268-09 | STAINLESS STEEL NO FINISH | CH509 |
| I6268-10 | STAINLESS STEEL NO FINISH | CH510 |
| I6268-11 | CRS PLATE, ZINC/COAT, CHROMATE, YELLOW | CH508 |
| I6268-12 | STAINLESS STEEL PAINT, BLACK, LOW GLOSS | CH750 |
| I6268-13 | STAINLESS STEEL NO FINISH | TM700 |
| I6268-14 | STAINLESS STEEL NO FINISH | CH751 |
| I6268-16 | STAINLESS STEEL NO FINISH | D250 |



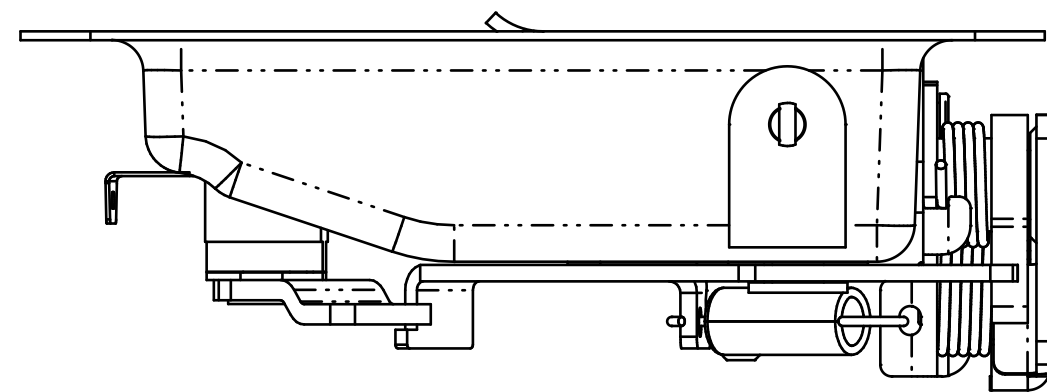
RECOMMENDED CUTOUT DETAIL



030-0175 SERIES STAMPED STEEL COMPARTMENT LATCH

NOTES:

- 1 SHIP IN THE LATCHED POSITION AS SHOWN.
- 2 LOCKCYLINDER/CAM SHOWN AND SHIPPED IN THE UNLOCKED POSITION.
- 3. SHIP WITH KEY IN LCKCYL.
- 4 TRIMARK PART NUMBER AND DATE CODE



| SPECIFICATION | | DESCRIPTION | ITEM | PART NUMBER | DESCRIPTION | QUANTITY |
|---|------------|-------------|-------------|----------------------|--|----------|
| DRAWN BY | JRS 3/7/02 | MATERIAL | | | | |
| CHECKED BY | MLH 3/7/02 | HEAT TREAT | | | | |
| DESIGN ENG. | | FINISH | SEE TABLE | | | |
| MFG. ENG. | | PROJECT | CUSTOMER | CUSTOMER PART NUMBER | | |
| QUALITY ENG. | | SCALE | REVISION | PART NUMBER | | |
| <small>TOLERANCES UNLESS OTHERWISE SPECIFIED</small> <small>ASME Y14.5M-1994</small> <small>DECIMALS ANGLES</small> <small>FRACTIONS ANGLES</small> <small>ASME Y14.5M-1994</small> | | SIZE | PART WEIGHT | SURFACE AREA | PRODUCT CODE | |
| <small>INCH [METRIC]</small> | | D | | | <small>REPORT ERRORS TO ENGINEERING DEPARTMENT</small> <small>DO NOT SCALE DRAWING</small> | |
| | | SCALE | REVISION | PART NUMBER | | |
| | | FULL | 0 | PR16268-XX | | |

TriMark
500 Bailey Avenue
New Hampton, Iowa 50659 U.S.A.
Tel: 641-394-3188
Fax: 641-394-2392

This drawing and the information contained herein is the property of TriMark Corporation and shall not be used for any purpose without our written consent.