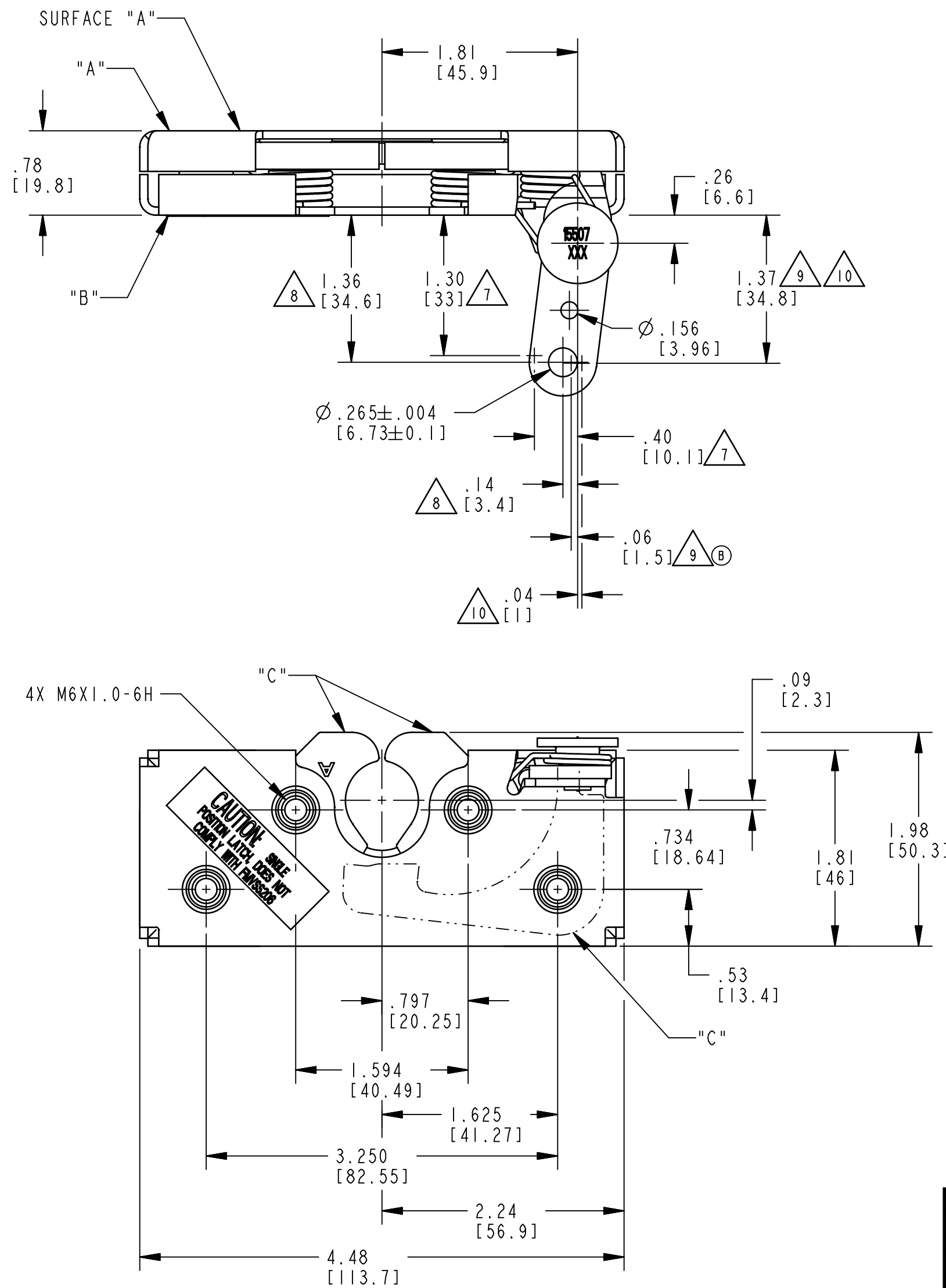


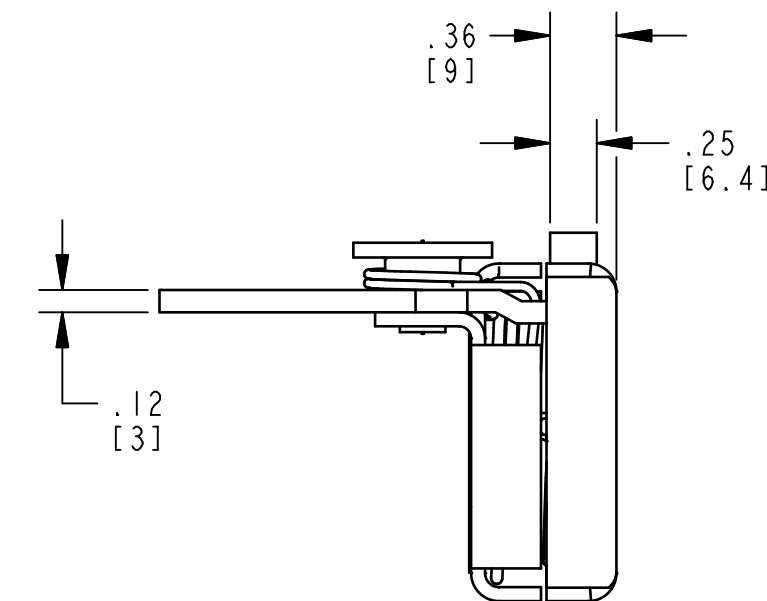
REV.	ECN	BY	CHKD	REVISION
B	PRE-RLSE	JJH 11/13/97	JMH 11/13/97	ADDED .06; 97088 WAS 97095, 050-0110 WAS 050-0100; REVISED NOTE 1, DISPLAY OF ASSY, AND PART NAME
0	RLSE	JJH 3/3/98	CML 3/3/98	RELEASED FOR PRODUCTION
1	11177	TJN 03/03/00	JRS 03/03/00	REVISED PROD CODE UPDATED DISPLAY



NOTES:

- ①. ASSEMBLY COMPLIES WITH STRENGTH REQUIREMENTS OF SAE STD J839.
2. SPRINGS ARE STAINLESS STEEL PER TRI/MARK ENG. SPEC. ES-101. INTERNAL ROTATING COMPONENTS "C" ARE HARDENED STEEL, COATED WITH OVEN CURED DRY LUBRICANT. ALL OTHER COMPONENTS ARE ZINC PLATED STEEL WITH YELLOW CHROMATE COATING. CASE HALVES "A" AND "B" ARE HSLA STEEL.
3. TORQUE MOUNTING FASTENERS TO 10 FT-LBS [13.6 Nm] MAX.
4. WHEN MOUNTED TO SURFACE "A", MOUNTING HOLE SIZE NOT TO EXCEED $\phi .312$ [8].
5. USE WITH TRI/MARK'S $\phi .675$ [17.15] STRIKER BOLT.
6. DIMENSIONS IN [] ARE IN MILLIMETERS FOR REFERENCE ONLY.

- ⑦ FREE TRAVEL.
- ⑧ CONTACT POSITION (SHOWN).
- ⑨ RELEASE POINT.
- ⑩ MAXIMUM TRAVEL.



PRODUCT SUPPORT DRAWING
Individual part dimensions are for reference only. Refer to individual part drawings for complete dimensions and specifications.

SPEC	DESCRIPTION	ITEM	PART NO.	DESCRIPTION	QTY.
DRAWN BY DA 8/22/97	MATL				
CHECKED BY BJP 8/26/97	HEAT TREAT				
DESIGN ENG. JLB 3/3/98	FINISH				
MFG. ENG.					
QUALITY ENG.		PROJECT 97088	CUSTOMER	CUSTOMER PART NO.	PART NAME ASSY, DBLRT, RH, M6X1.0, STR
TOLERANCES UNLESS OTHERWISE SPECIFIED ANSI Y14.5M-1982 DIMENSIONS ANGLES X.X ±.1 X° ±3° X.XX ±.03 X.X° ±1.0° X.XXX ±.010 X.XX° ±.50°		SIZE C	PART WT.	SURFACE AREA	PROD CODE E09 (050-0110)
FORM 163-210 REV. 1.0 10/15/93		REPORT ERRORS TO ENGINEERING DEPT.		DO NOT SCALE DRAWING	
SCALE FULL	REV. 1	PART NO. PRI5507			