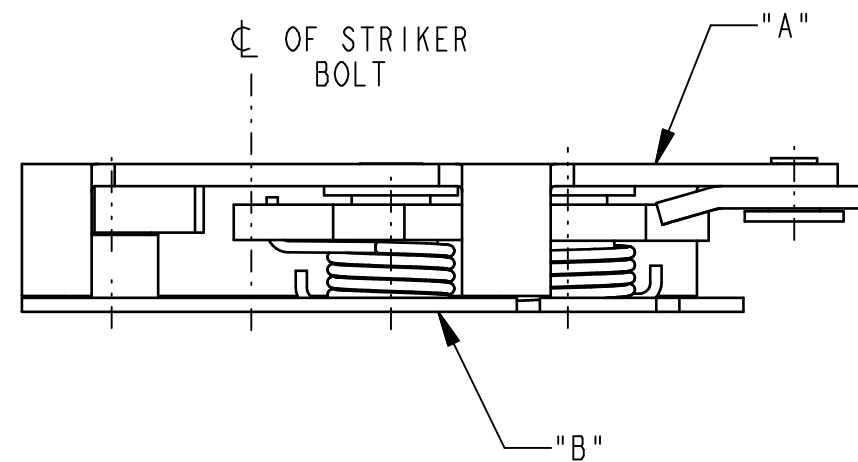
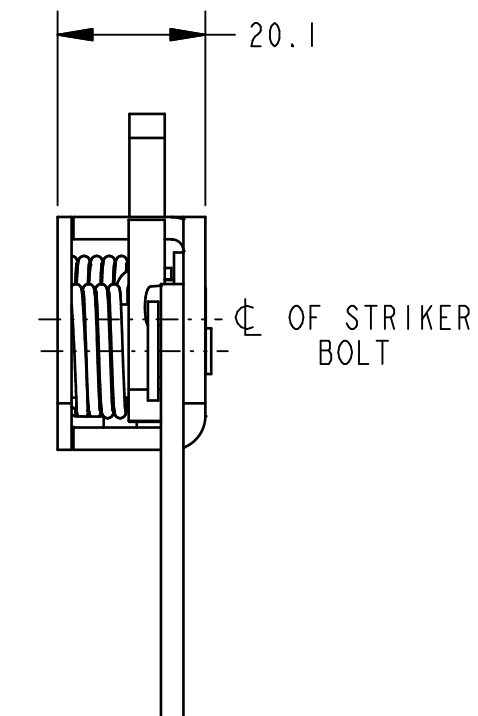
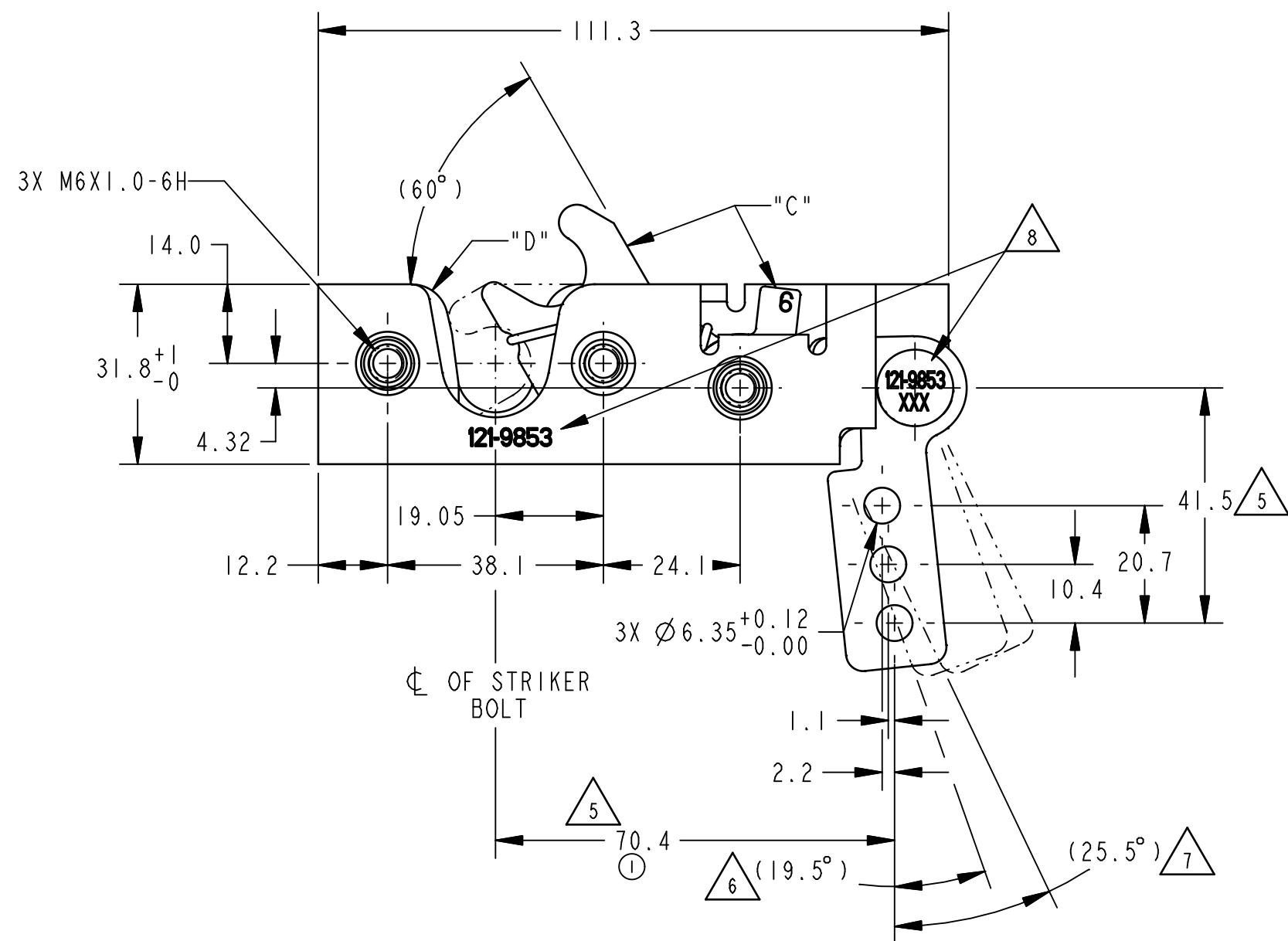


REV.	ECN	BY	CHKD	REVISION
0	RLSE	JLS 1/18/95	DFT 1/18/95	RELEASE FOR PRODUCTION
1	8754	JMK 7/10/95	CHS 7/11/95	70.4 WAS 70.8
2	11177	TJN 04/26/00	BJB 04/26/00	ADDED NOTE 8, REVISED PROD CODE



NOTES:

- 1) ASSEMBLY COMPLIES WITH STRENGTH REQUIREMENTS OF SAE STANDARD J839 WHEN TESTED USING SAE GRADE 8.8 MOUNTING FASTENERS AND TRI/MARK'S  $\varnothing 12.7$  STRIKER BOLT.
  - 2) CASE HALVES "A" AND "B" TO BE HIGH STRENGTH STEEL.
  - 3) SPRINGS ARE STAINLESS STEEL.  
INTERNAL LATCH COMPONENTS "C" AND "D" ARE HARDENED STEEL.  
INTERNAL LATCH COMPONENTS "C" ARE COATED WITH DRY LUBRICANT COATING. ALL OTHER COMPONENTS ARE ZINC PLATED STEEL WITH YELLOW CHROMATE CONVERSION COATING.
  - 4) MOUNTING FASTENERS TORQUE NOT TO EXCEED 10 N-m.
- ⑤ CONTACT POSITION.  
⑥ RELEASE POSITION.  
⑦ MAXIMUM TRAVEL.  
⑧ CUSTOMER PART NUMBER AND DATE CODE LOCATED IN EITHER AREA APPROXIMATELY AS SHOWN.



**METRIC**

DIMENSIONS	ANGLES
X.X = ±1.5	X° = ±3°
X.XX = ±.8	X.X° = ±1°
X.XXX = ±.25	X.XX° = ±.5°

SPEC	DESCRIPTION	ITEM	PART NO.	DESCRIPTION	QTY.
DRAWN BY	JLS	1/13/95	MATL.		
CHECKED BY	DFT	1/16/95	HEAT TREAT		
DESIGN ENG.	KPE	1/20/95	FINISH		
MFG. ENG.			PROJECT	93051	
QUALITY ENG.			CUSTOMER	CATERPILLAR	
TOLERANCES UNLESS OTHERWISE SPECIFIED DIMENSIONS ANGLES FRACTIONS DECIMALS ANGLES .125 ±.0125 .125 ±.0125 .125 ±.0125 .25 ±.025 .25 ±.025 .25 ±.025 .5 ±.05 .5 ±.05 .5 ±.05 1 ±.1 1 ±.1 1 ±.1 2 ±.2 2 ±.2 2 ±.2 3 ±.3 3 ±.3 3 ±.3 4 ±.4 4 ±.4 4 ±.4 5 ±.5 5 ±.5 5 ±.5 6 ±.6 6 ±.6 6 ±.6 7 ±.7 7 ±.7 7 ±.7 8 ±.8 8 ±.8 8 ±.8 9 ±.9 9 ±.9 9 ±.9 10 ±.1 10 ±.1 10 ±.1 15 ±.15 15 ±.15 15 ±.15 20 ±.2 20 ±.2 20 ±.2 30 ±.3 30 ±.3 30 ±.3 40 ±.4 40 ±.4 40 ±.4 50 ±.5 50 ±.5 50 ±.5 60 ±.6 60 ±.6 60 ±.6 70 ±.7 70 ±.7 70 ±.7 80 ±.8 80 ±.8 80 ±.8 90 ±.9 90 ±.9 90 ±.9 100 ±.1 100 ±.1 100 ±.1 150 ±.15 150 ±.15 150 ±.15 200 ±.2 200 ±.2 200 ±.2 300 ±.3 300 ±.3 300 ±.3 400 ±.4 400 ±.4 400 ±.4 500 ±.5 500 ±.5 500 ±.5 600 ±.6 600 ±.6 600 ±.6 700 ±.7 700 ±.7 700 ±.7 800 ±.8 800 ±.8 800 ±.8 900 ±.9 900 ±.9 900 ±.9 1000 ±.1 1000 ±.1 1000 ±.1 1500 ±.15 1500 ±.15 1500 ±.15 2000 ±.2 2000 ±.2 2000 ±.2 3000 ±.3 3000 ±.3 3000 ±.3 4000 ±.4 4000 ±.4 4000 ±.4 5000 ±.5 5000 ±.5 5000 ±.5 6000 ±.6 6000 ±.6 6000 ±.6 7000 ±.7 7000 ±.7 7000 ±.7 8000 ±.8 8000 ±.8 8000 ±.8 9000 ±.9 9000 ±.9 9000 ±.9 10000 ±.1 10000 ±.1 10000 ±.1			CUSTOMER PART NO.	121-9853	
INCH [METRIC]			SIZE	C	
REPORT ERRORS TO ENGINEERING DEPT.			SURFACE AREA		
FORM 163-210 REV. 1.0 10/15/93			PROD CODE	② E20 (050-0204)	
DO NOT SCALE DRAWING			SCALE	FULL	
PART NAME			REV.	2	
SINGLROTR RH M6			PART NO.	PRI3845	

**TRI/MARK**  
AN EMPLOYEE-OWNED CORPORATION  
Industrial Park  
New Hampton, Iowa 50659  
Telephone: 515-394-3188  
Fax: 515-394-2392

THIS DRAWING AND THE INFORMATION CONTAINED  
HEREIN IS THE PROPERTY OF TRI/MARK CORP.  
AND SHALL NOT BE USED FOR ANY PURPOSE  
WITHOUT OUR WRITTEN CONSENT