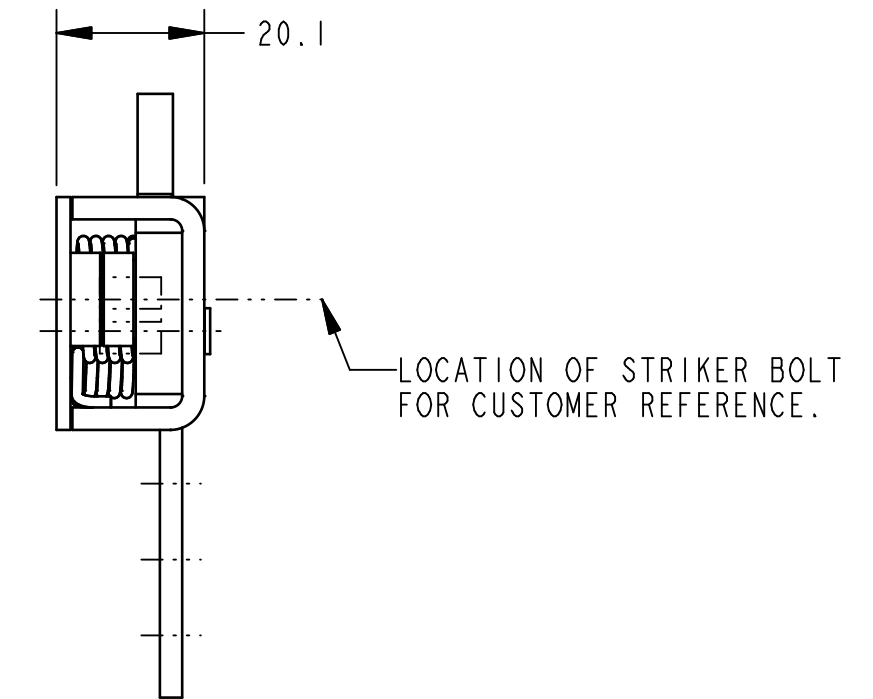
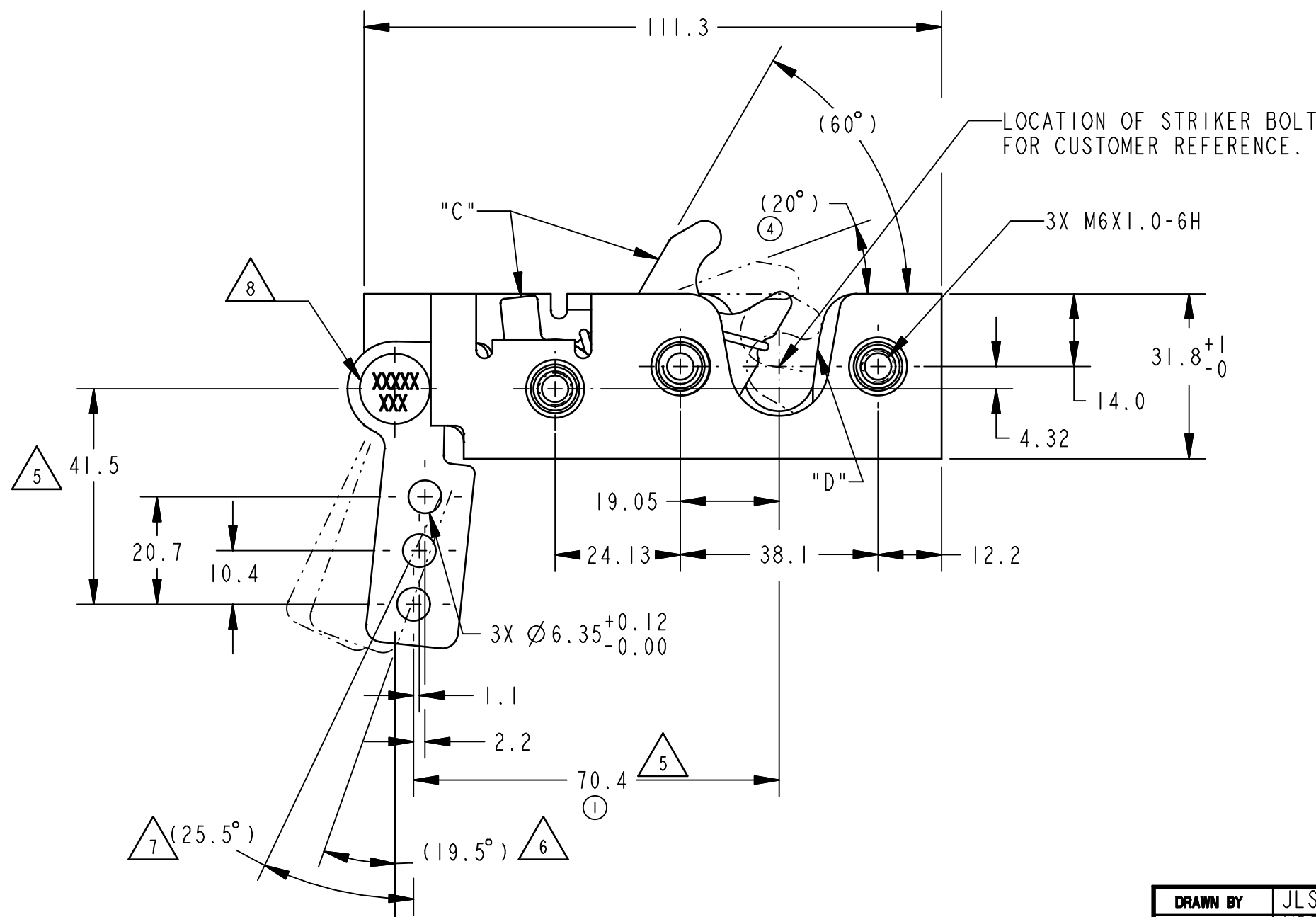
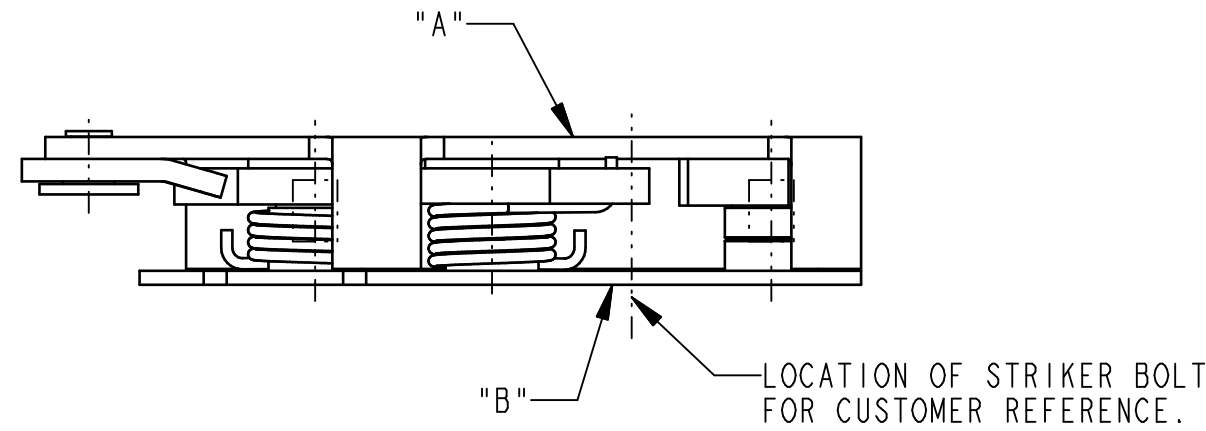


REVISION	ECO	BY	CHECKED	DESCRIPTION
0	RLSE	JLS 1/18/95	DFT 1/18/95	RELEASE FOR PRODUCTION
1	8754	JMK 7/10/95	CHS 7/11/95	70.4 WAS 70.8
2	11164	TJN 11/23/99	JRS 11/23/99	XXXXX-XXX WAS 121 9852 XX DELETED CUSTOMER NAME AND CUSTOMER PART NUMBER IN TITLE BLOCK; ADDED NOTE 8 AND PART NUMBER TABLE
3	11177	TJN 04/26/00	BJB 04/26/00	REVISED NOTE 8, PROD CODE
4	19207	MLH 1/9/02	JRS 1/9/02	ADDED (20°), UPDATED NOTES 1 AND 4

NOTES:

- ④ 1) ASSEMBLY COMPLIES WITH STRENGTH REQUIREMENTS OF SAE STANDARD J839.
 - 2) CASE HALVES "A" AND "B" TO BE HIGH STRENGTH STEEL.
 - 3) SPRINGS ARE STAINLESS STEEL.
INTERNAL LATCH COMPONENTS "C" AND "D" ARE HARDENED STEEL.
INTERNAL LATCH COMPONENT "C" IS COATED WITH DRY LUBRICANT COATING. ALL OTHER COMPONENTS ARE ZINC PLATED STEEL WITH YELLOW CHROMATE CONVERSION COATING.
 - ④ 4) TIGHTEN MOUNTING FASTENERS TO THE FASTENER MANUFACTURER'S RECOMMENDED TORQUE VALUE; HOWEVER, DO NOT EXCEED 13.6Nm.
- ⑤ CONTACT POSITION.
 - ⑥ RELEASE POSITION.
 - ⑦ MAXIMUM TRAVEL.
 - ④③②⑧ ASSEMBLY IDENTIFIED WITH PART NUMBER AND DATE CODE APPROXIMATELY AS SHOWN, OR IN OTHER APPROVED LOCATIONS AS OUTLINED IN ES-121.



METRIC

PART NUMBER TABLE		DIMENSIONS	ANGLES
VERSION	PART NUMBER MARKINGS	X.X = ±1.5	X° = ±3°
13844-01	121-9852	X.XX = ±.8	X.X° = ±1°
13844-02	13844	X.XXX = ±.25	X.XX° = ±.5°

SPECIFICATION	DESCRIPTION	ITEM	PART NUMBER	DESCRIPTION	QUANTITY
DRAWN BY: JLS 1/13/95	CHECKED BY: MPD 1/13/95	DESIGN ENG.: KPE 1/20/95	MFG. ENG.:	QUALITY ENG.:	
MATERIAL:		HEAT TREAT:		FINISH:	
PROJECT: 93051		CUSTOMER: ②	CUSTOMER PART NUMBER: ②		
SIZE: C	PART WEIGHT:	SURFACE AREA:	PRODUCT CODE: ③ E20 (050-0204)	REPORT ERRORS TO ENGINEERING DEPARTMENT	
DO NOT SCALE DRAWING		SCALE: FULL	REVISION: 4	PART NUMBER: PR13844	

TriMark
500 Bailey Avenue
New Hampton, Iowa 50659 U.S.A.
Tel: 641-394-3188
Fax: 641-394-2392

This drawing and the information contained herein is the property of TriMark Corporation and shall not be used for any purpose without our written consent.

PART NAME
SNGLROTR LH M6