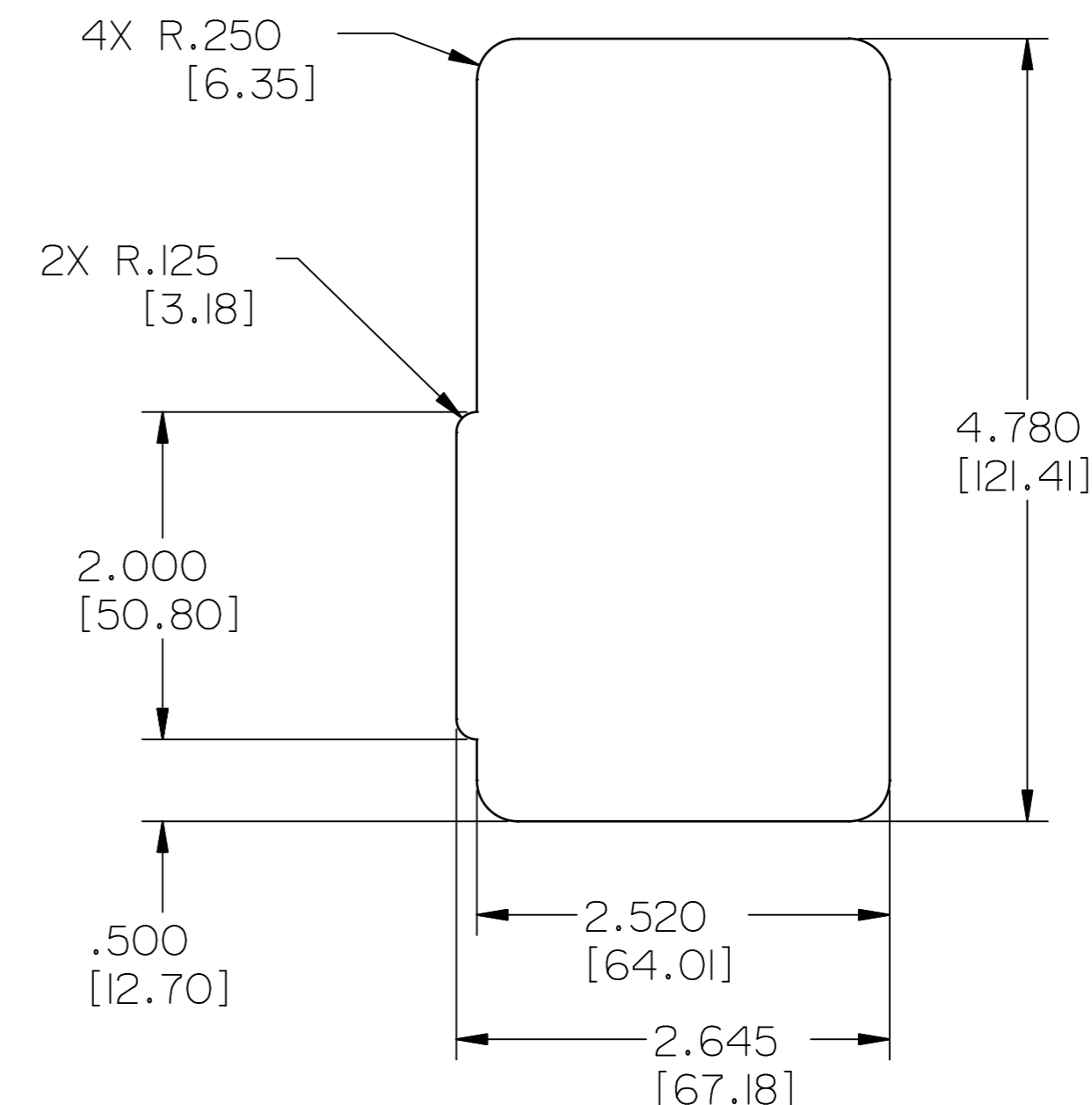
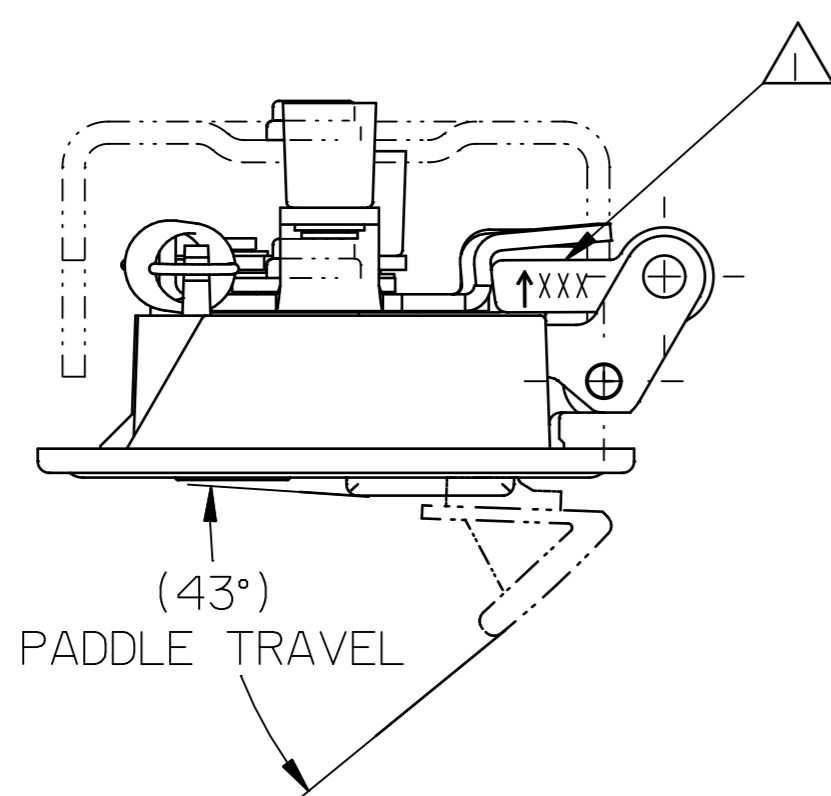
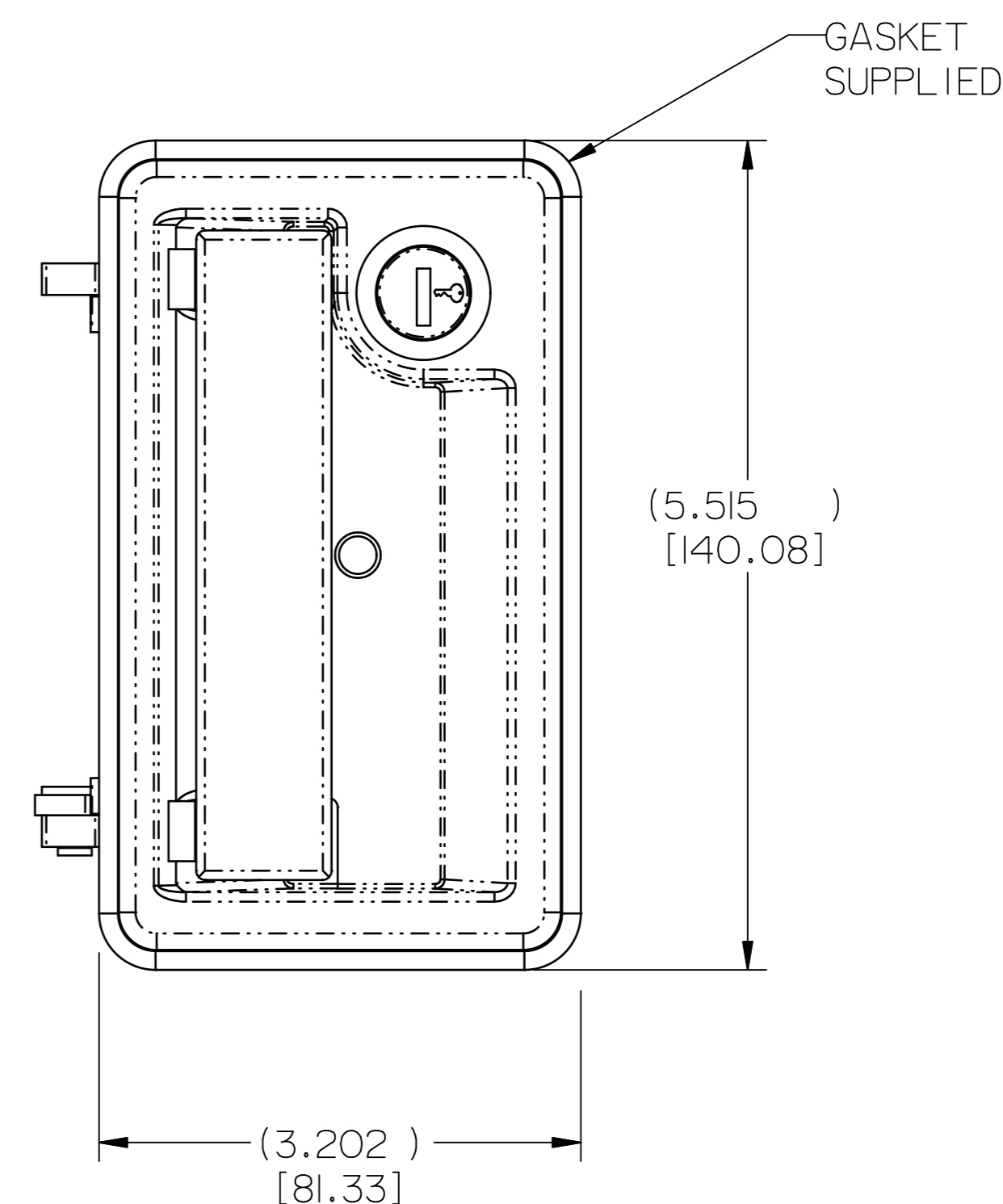
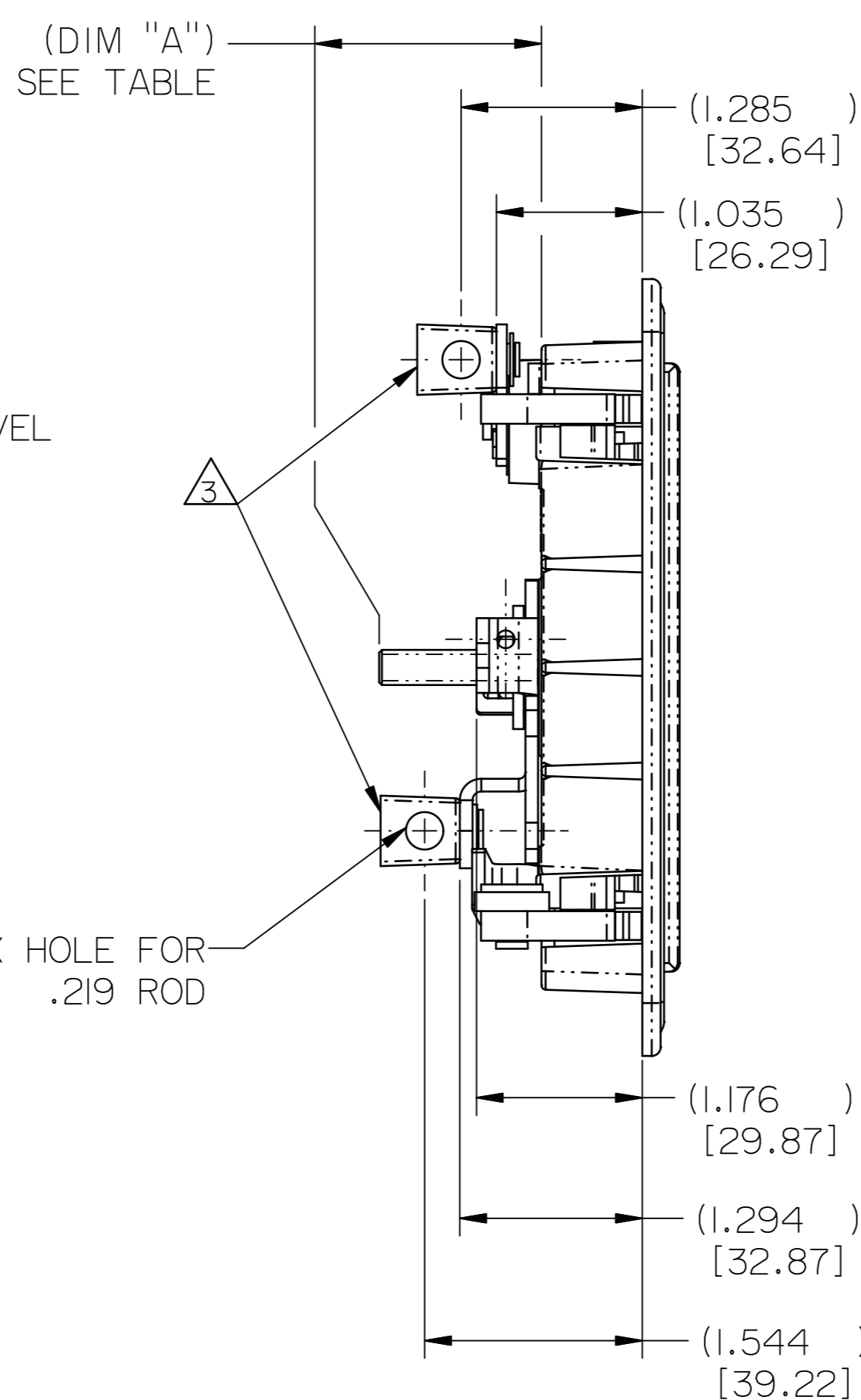
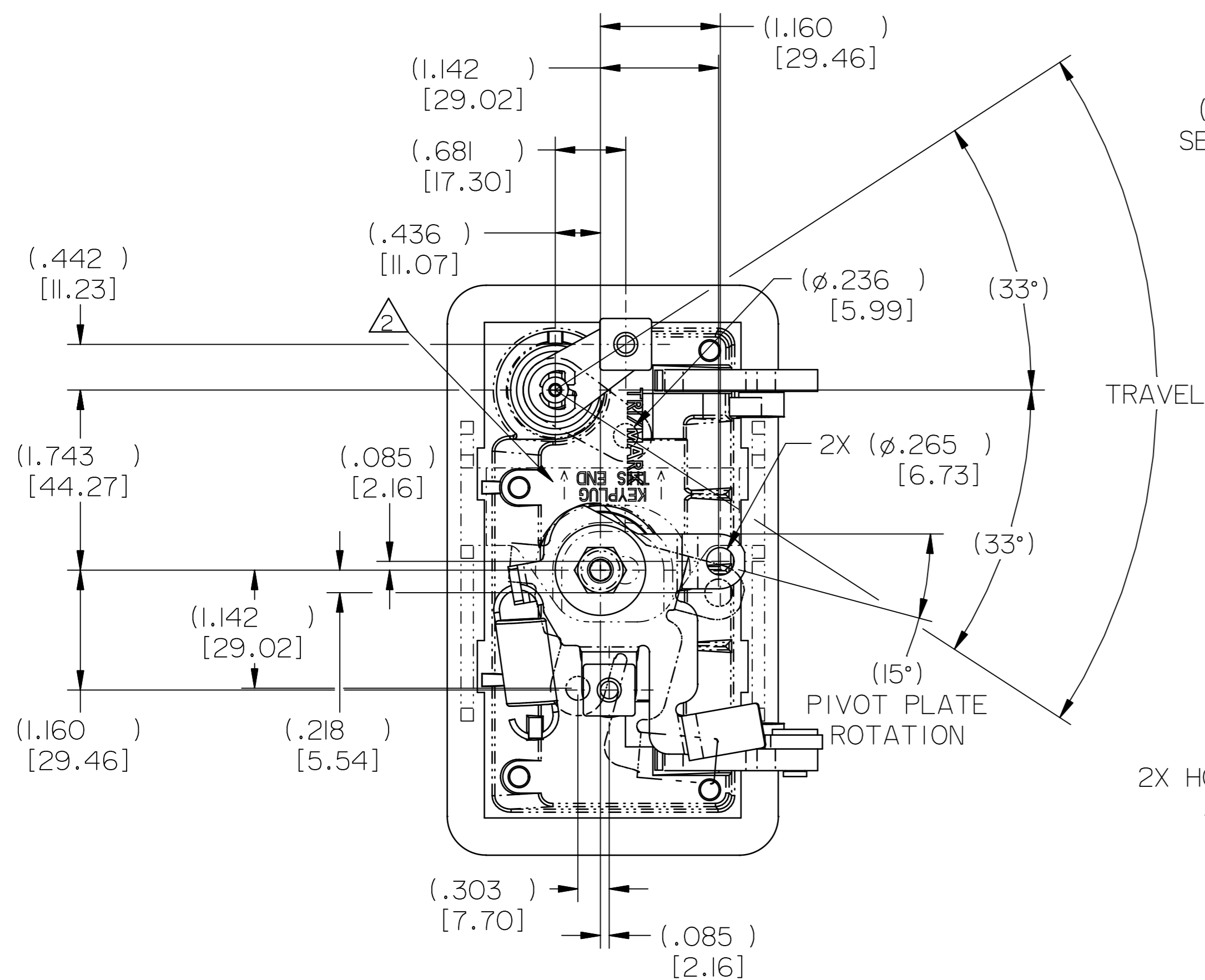


PART NO. PART NAME	FINISH	ROD COLLARS	DIM "A"	KEY CODE	KEYS SUPPLIED YES/NO (QTY)	SPECIAL NOTES
13438-01	PAINT,BLACK,LOW GLOSS	YES	1.152 [29.26]	TM205-250	YES (2)	
13438-02	PAINT,BLACK,TEXTURED	YES	1.152 [29.26]	TM205-250	YES (2)	
13438-03	HSG: PAINT,BLACK,LOW GLOSS PDL: PLATE,COPPER-NICKEL-CHROME	NO	1.152 [29.26]	TM205-250	YES (2)	
13438-04	PAINT,BLACK,LOW GLOSS	NO	1.152 [29.26]	TM205-250	YES (2)	
13438-05	PLATE,COPPER-NICKEL-NICKEL-CHROME	NO	.902 [22.91]	TM211	YES (2)	
13438-07	HSG: PAINT,BLACK,LOW GLOSS PDL: PLATE,COPPER-NICKEL-CHROME	NO	1.152 [29.26]	YM211	YES (2)	
13438-08	PAINT,BLACK,LOW GLOSS	NO	1.152 [29.26]	TM211	YES (2)	
13438-09	HSG: PAINT,BLACK,LOW GLOSS PDL: PLATE,COPPER-NICKEL-CHROME	NO	1.152 [29.26]	TM205-250	YES (4)	TWO ASSEMBLIES TO BE KEYED ALIKE AND BAGGED TOGETHER.



RECOMMENDED CUTOUT DETAIL



NOTES:

- ① TRIMARK DATE CODE.
- ② PROPER ORIENTATION OF MOUNTING PLATE WITH RESPECT TO THE LOCKCYLINDER.
- ③ ROD COLLARS OPTIONAL. SEE TABLE FOR WHICH ASSEMBLIES HAVE ROD COLLARS.

030-0400 PADDLE HANDLE ASSEMBLY

SPECIFICATION		DESCRIPTION		ITEM	PART NUMBER	DESCRIPTION	QUANTITY	
DRAWN BY	JRS	3/13/02	MATERIAL					<b>TriMark</b> 500 Bailey Avenue New Hampton, Iowa 50659 U.S.A. Tel: 641-394-3188 Fax: 641-394-2392
CHECKED BY	CRZ	3/13/02	HEAT TREAT					
DESIGN ENG.			FINISH					
MFG. ENG.			SEE TABLE					
QUALITY ENG.			PROJECT					This drawing and the information contained herein is the property of TriMark Corporation and shall not be used for any purpose without our written consent.
TO TOLERANCES UNLESS OTHERWISE SPECIFIED: FRACTIONS DECIMALS ANGLES 1/16 0.0625 30° 0.0006 1/32 0.0312 45° 0.0012 1/64 0.0156 60° 0.0025 3/32 0.0937 90° 0.0050 1/8 0.1250 120° 0.0100 5/16 0.3125 150° 0.0200 3/8 0.3750 180° 0.0400			CUSTOMER		CUSTOMER PART NUMBER			
INCH (METRIC) D			SIZE	PART WEIGHT	SURFACE AREA	PRODUCT CODE	PART NAME	
REPORT ERRORS TO ENGINEERING DEPARTMENT DO NOT SCALE DRAWING			D			C08 (030-0400)	PADDLE HANDLE ASSEMBLY	
			SCALE	REVISION	PART NUMBER			
			2:1	0			PR13438-XX	