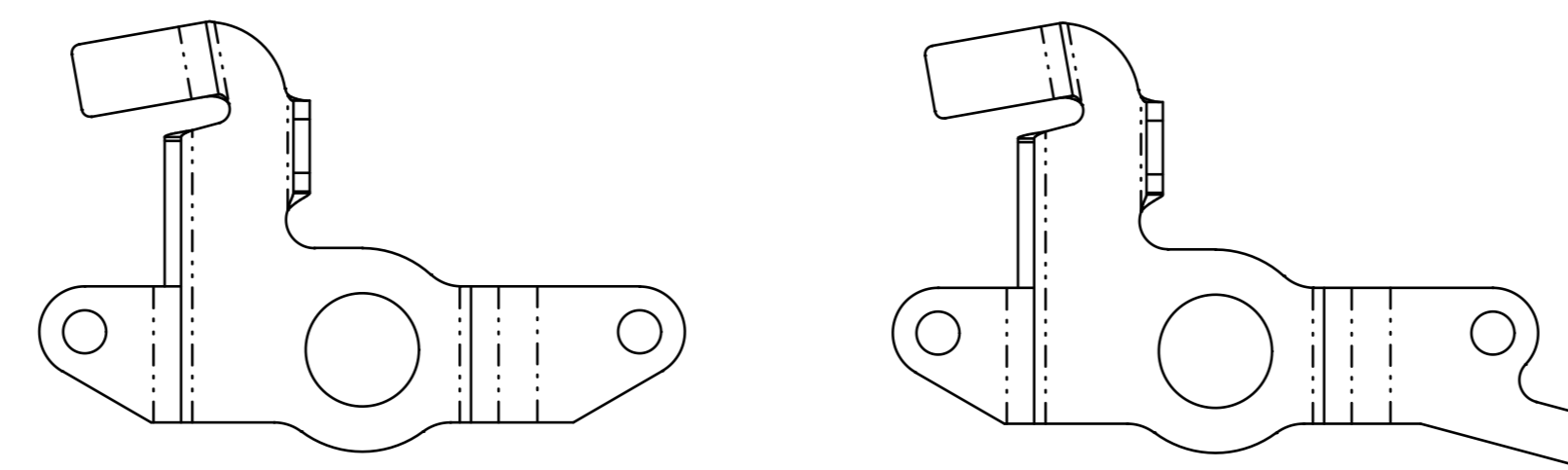
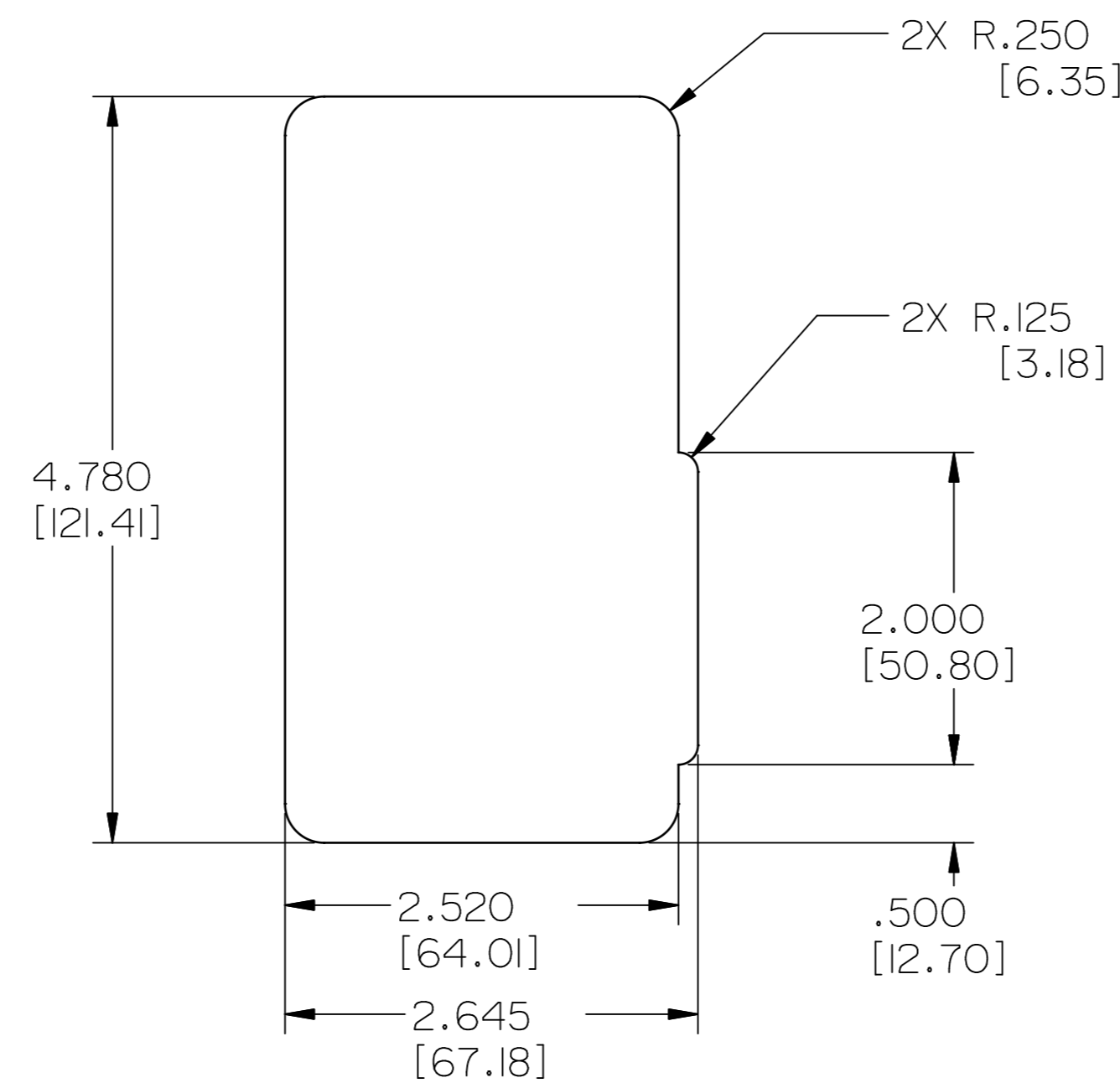
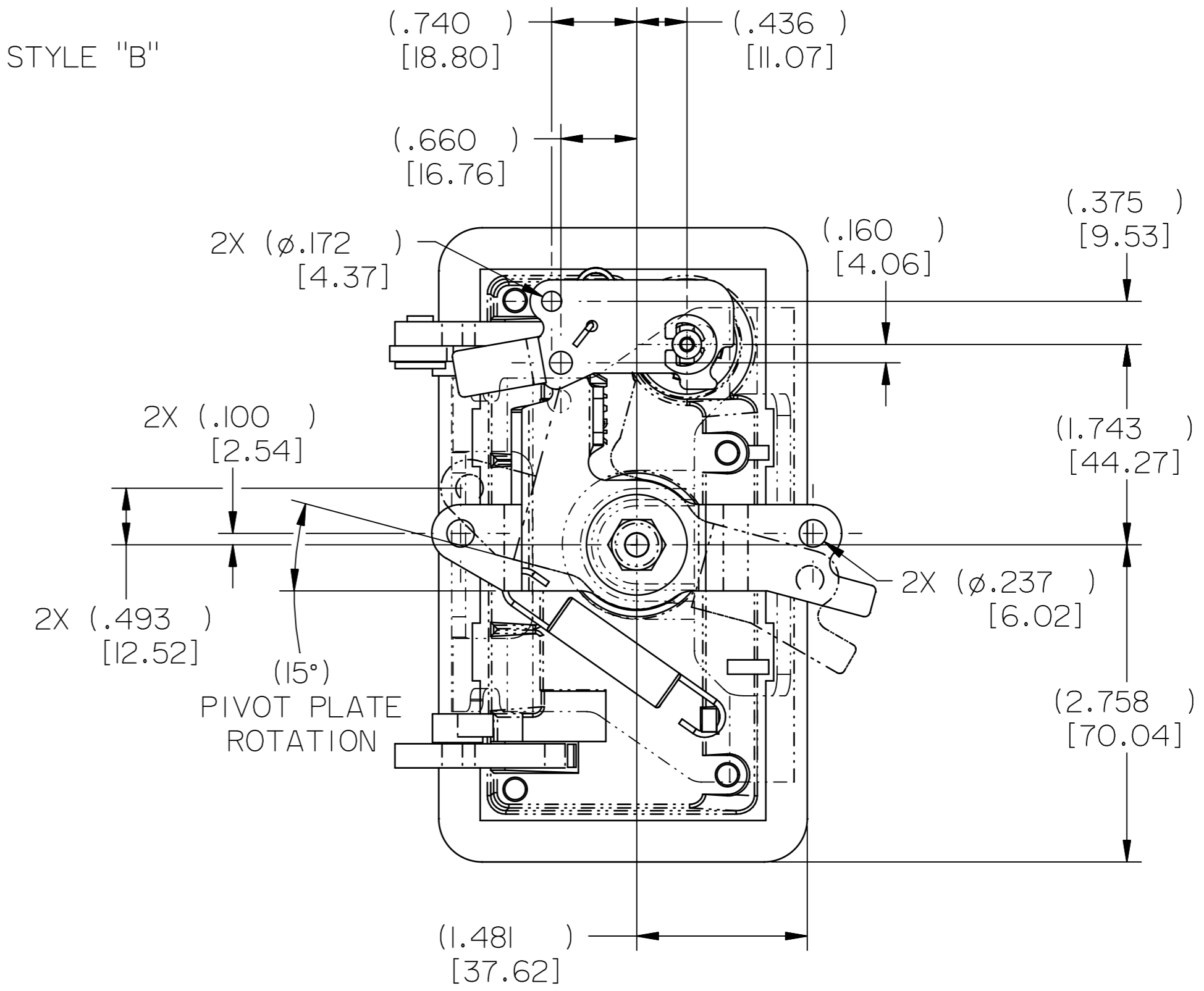
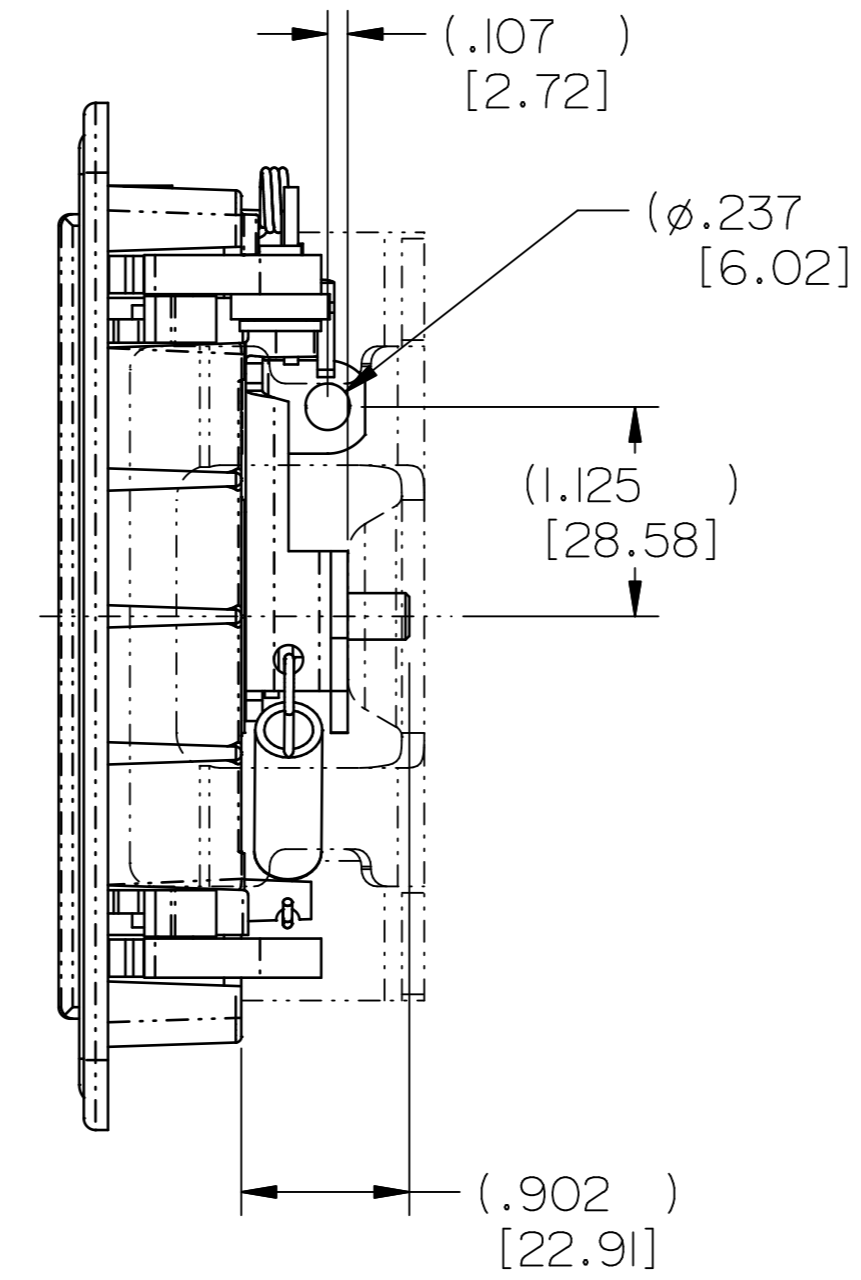
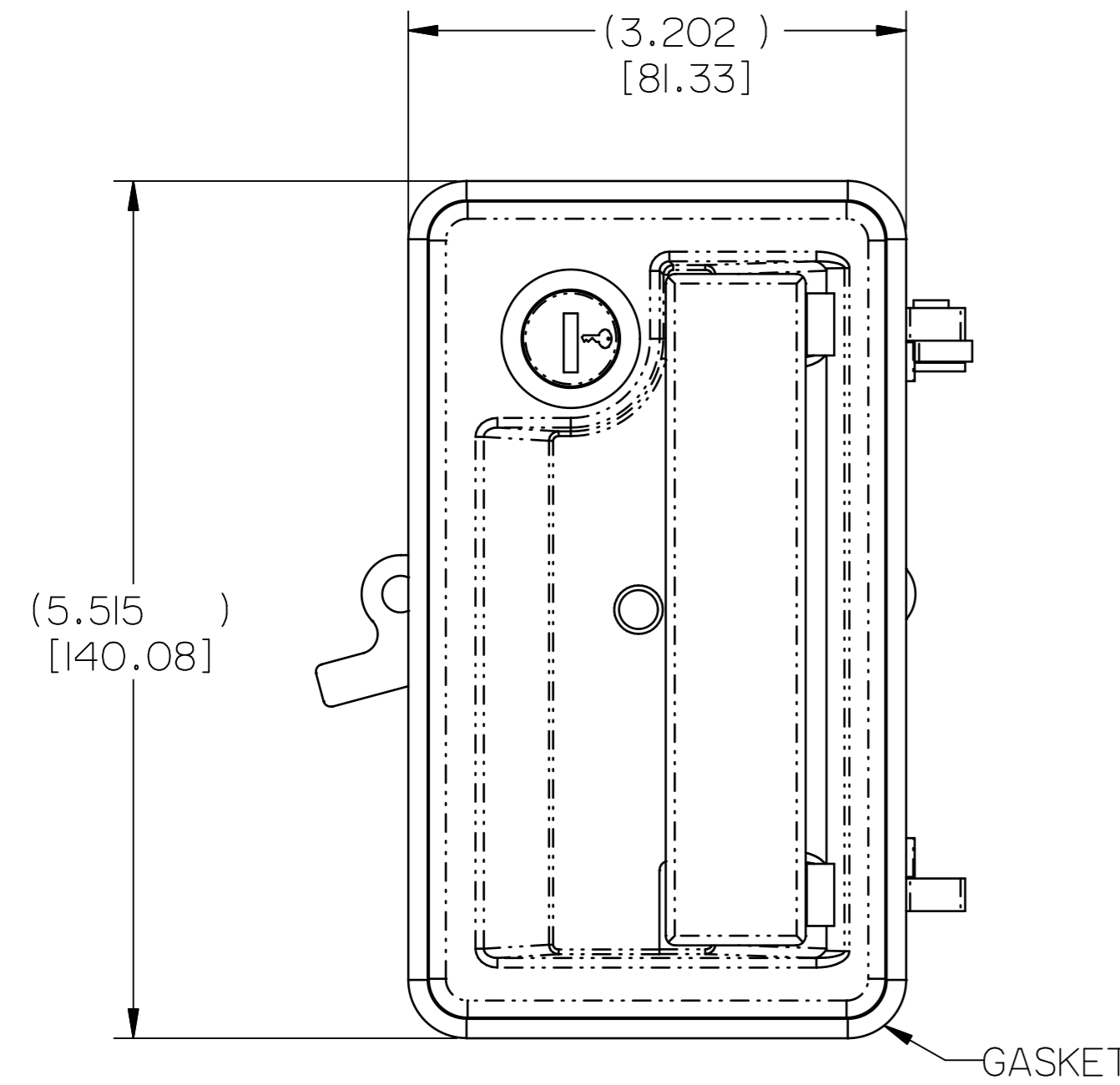


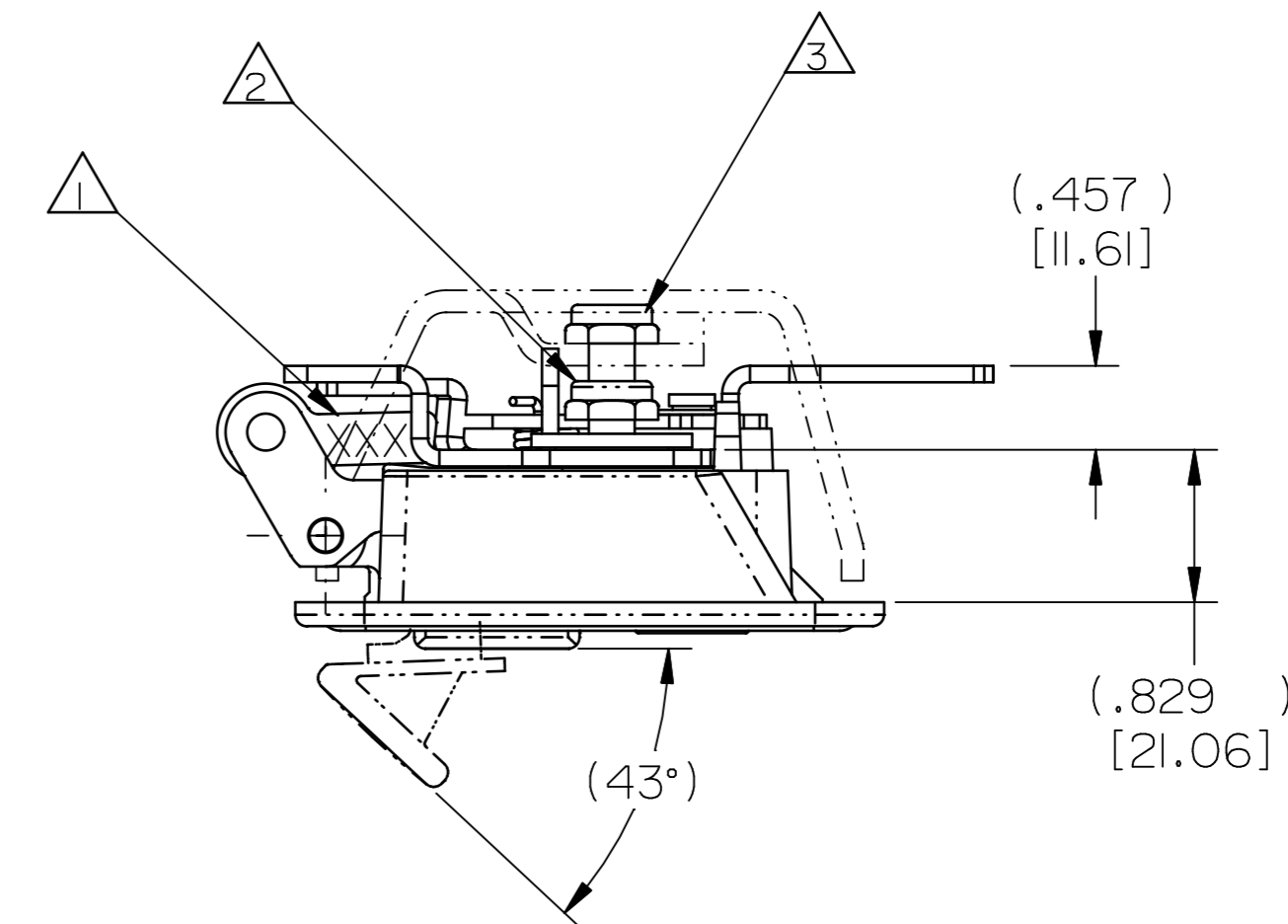
PART NO.	KEY CODE	PIVOT PLATE △4	FINISH	KEYS SUPPLIED YES/NO (QTY)
11813-01	RH028	B	PAINT, BLACK, LOW GLOSS	NO
11813-03	AR51481	A	PAINT, BLACK, LOW GLOSS	NO
11813-37	TM211	B	PAINT, BLACK, LOW GLOSS	YES (2)



△4 PIVOT PLATE STYLE "A" △4 PIVOT PLATE STYLE "B"



RECOMMENDED CUTOUT DETAIL



030-0450 2 POINT PADDLE HANDLE ASSEMBLY

NOTES:

- △1 TRIMARK DATE CODE.
- △2 TORQUE LOCK NUT FOR PIVOT PLATE TO 75 IN-LBS.
- △3 TORQUE LOCK NUT FOR MOUNTING BRACKET TO 30 IN-LBS.
- △4 TWO PIVOT PLATES AVAILABLE. SEE TABLE FOR TYPES.

SPECIFICATION	DESCRIPTION	ITEM	PART NUMBER	DESCRIPTION	QUANTITY	
DRAWN BY JRS 3/19/02	CHECKED BY CRZ 3/19/02	MATERIAL				 500 Bailey Avenue New Hampton, Iowa 50659 U.S.A. Tel: 641-394-3188 Fax: 641-394-2392
DESIGN ENG.	MFG. ENG.	HEAT TREAT				
QUALITY ENG.	FINISH					
PROJECT		CUSTOMER		CUSTOMER PART NUMBER		
SIZE D		PART WEIGHT	SURFACE AREA	PRODUCT CODE C11 (030-0450)	SCALE FULL	
REPORT ERRORS TO ENGINEERING DEPARTMENT				DO NOT SCALE DRAWING		
PART NAME 030-0450 2PT PADDLE HANDLE				SCALE FULL	REVISION 0	
PART NUMBER PRI1813-XX				PART NUMBER PRI1813-XX		