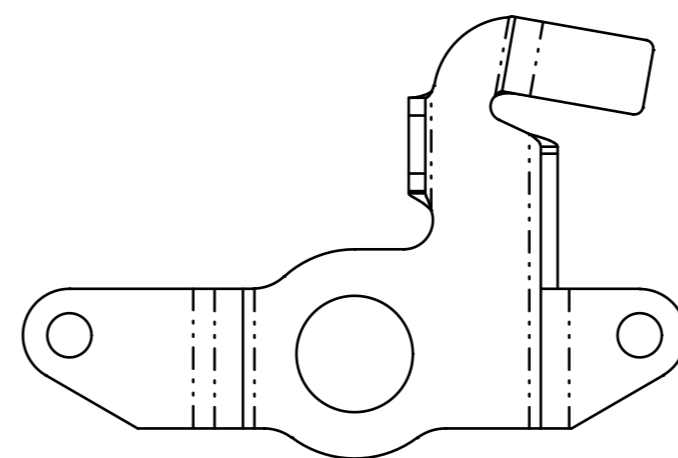
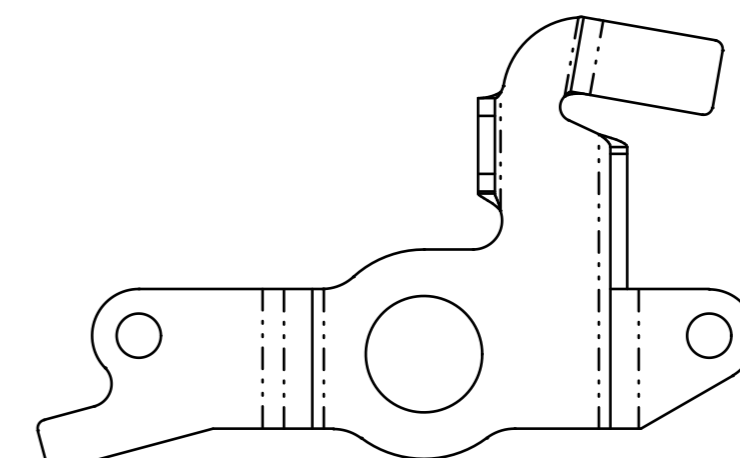


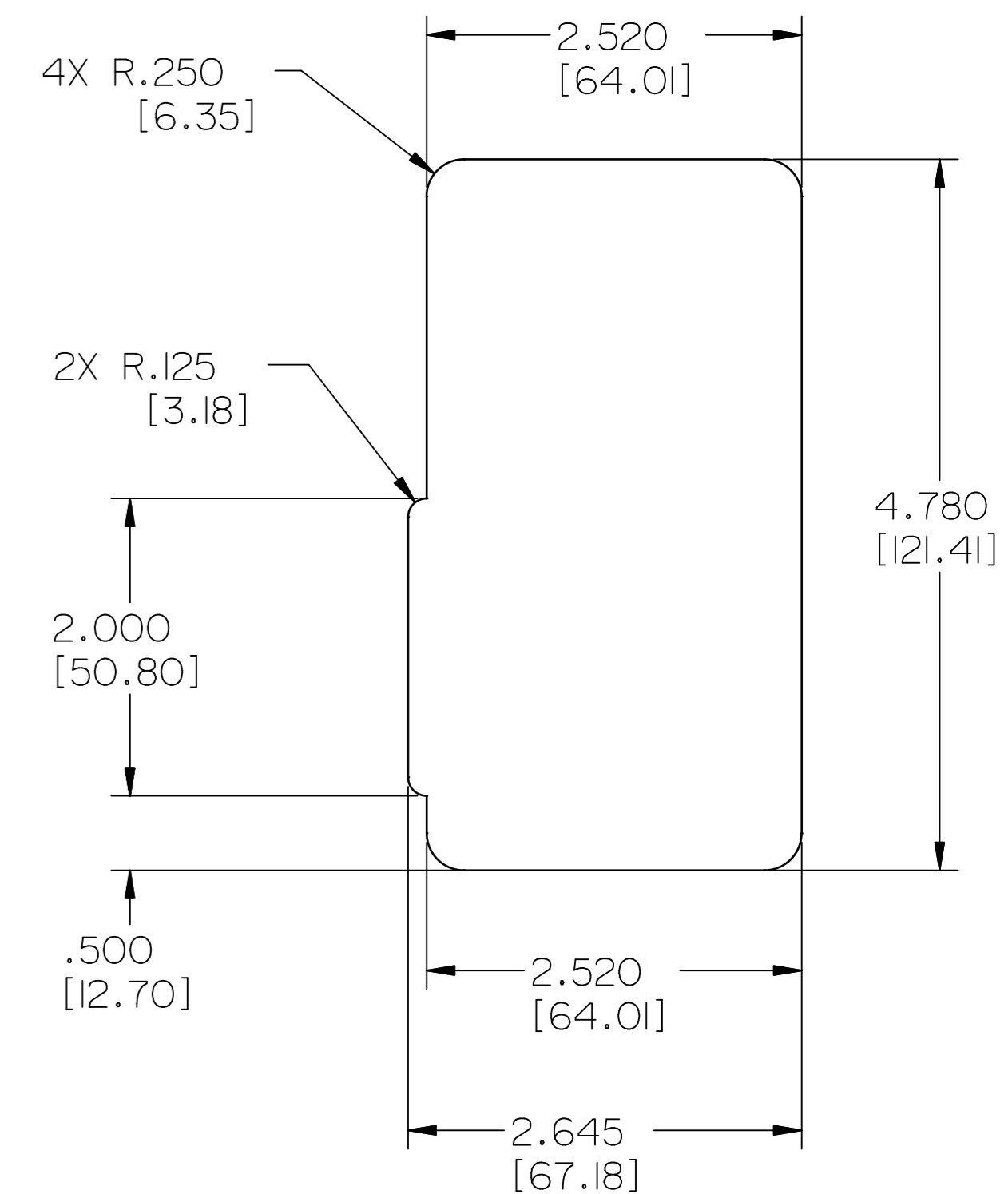
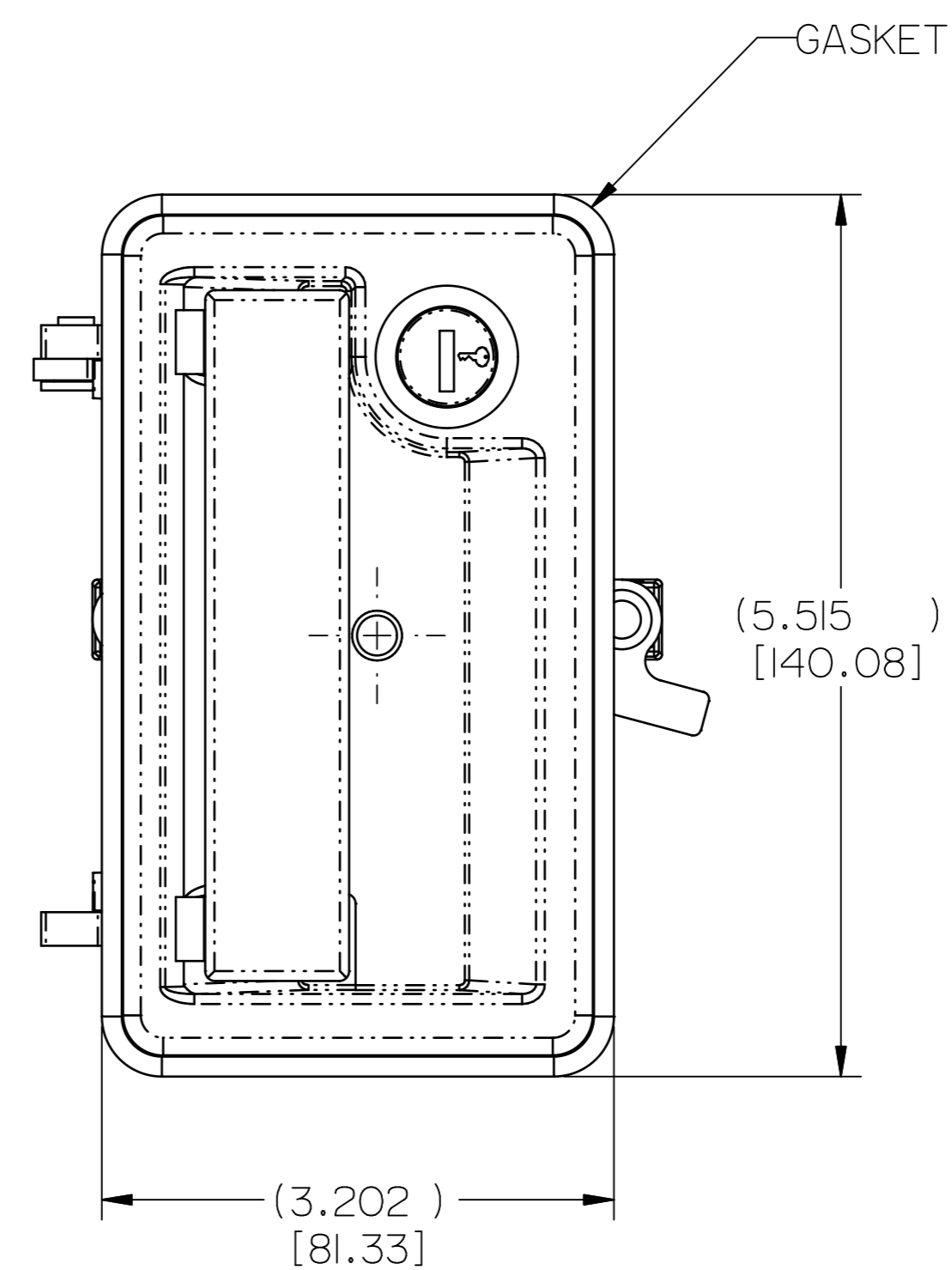
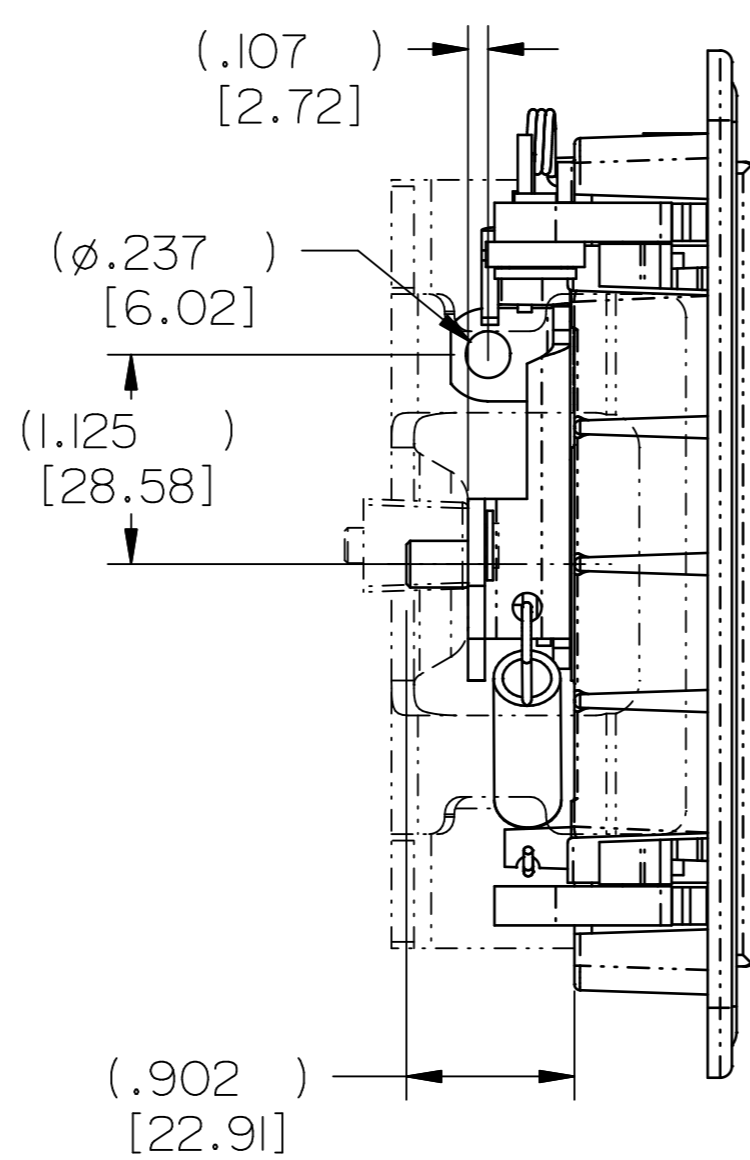
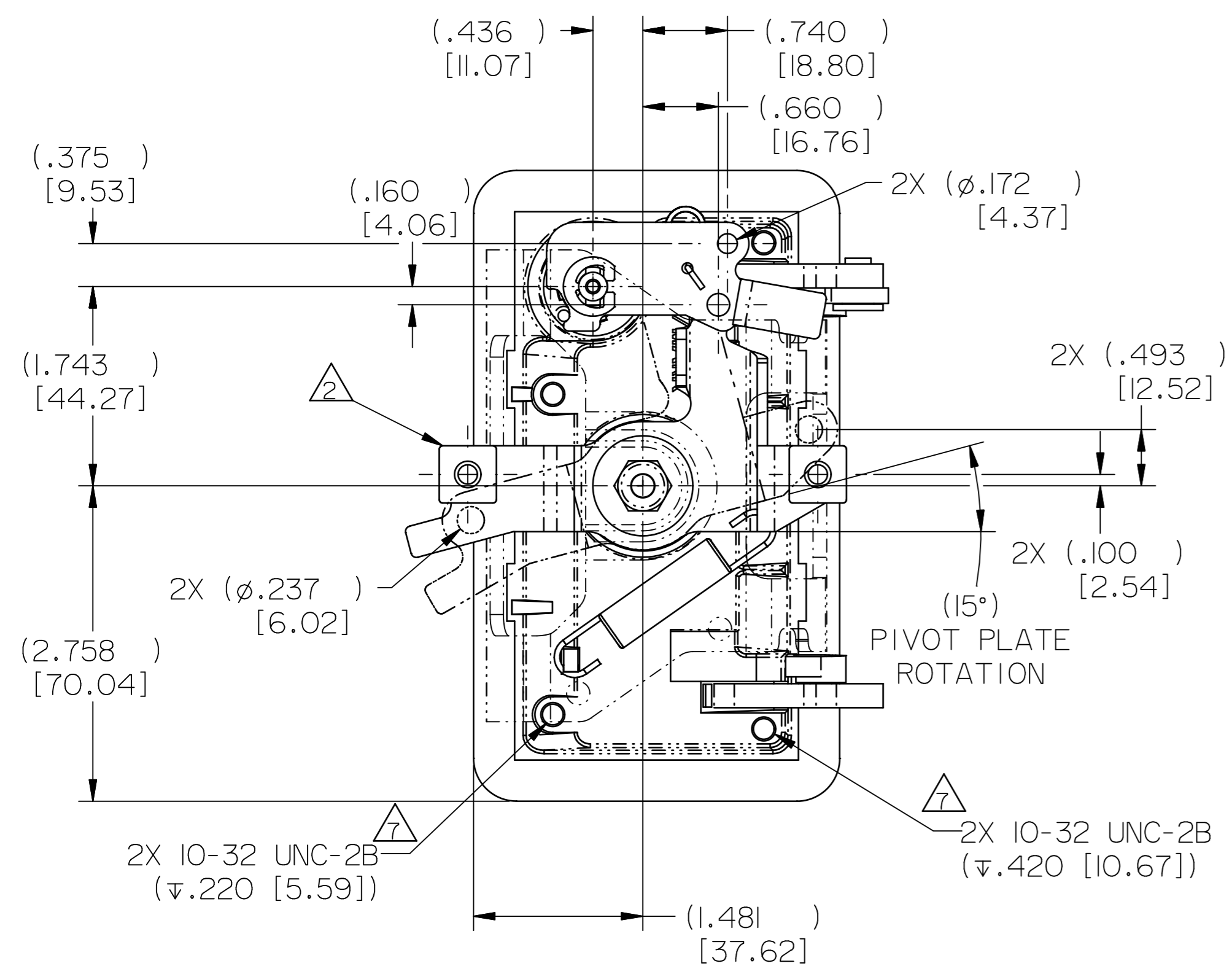
PART NO.	KEY CODE	COLLAR	MOUNTING BRACKET	PIVOT PLATE	FINISH	KEYS SUPPLIED YES/NO (QTY)
11812-01	RH028	NO	YES	B	PAINT, BLACK, LOW GLOSS	NO
11812-02	RH037	NO	NO	B	PAINT, BLACK, LOW GLOSS	NO
11812-03	TM211	NO	YES	B	PAINT, BLACK, LOW GLOSS	YES (2)
11812-05	AR51481	NO	YES	A	PAINT, BLACK, LOW GLOSS	NO
11812-06	TM211	YES	YES	B	PAINT, BLACK, LOW GLOSS	YES (2)
11812-37	TM211	NO	YES	B	PAINT, BLACK, LOW GLOSS	YES (2)



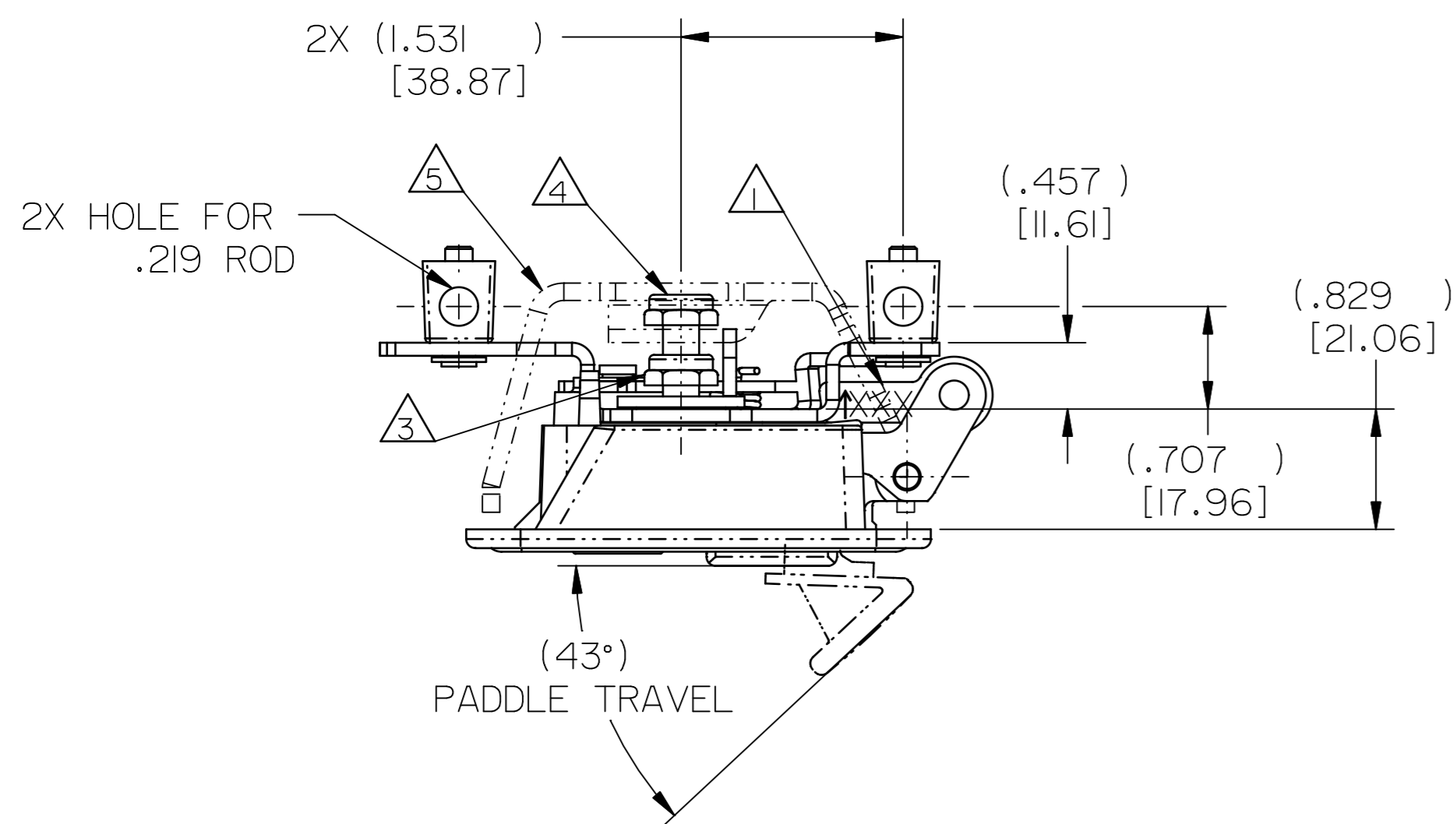
△ PIVOT PLATE STYLE "A"



△ PIVOT PLATE STYLE "B"



RECOMMENDED CUTOUT DETAIL



NOTES:

- △ TRIMARK DATE CODE.
- △ ROD COLLARS OPTIONAL. SEE TABLE FOR WHICH ASSEMBLIES HAVE ROD COLLARS.
- △ TORQUE LOCK NUT FOR PIVOT PLATE TO 75 IN-LBS.
- △ TORQUE LOCK NUT FOR MOUNTING BRACKET TO 30 IN-LBS.
- △ MOUNTING BRACKET OPTIONAL. SEE TABLE FOR WHICH ASSEMBLIES HAVE MOUNTING BRACKET.
- △ TWO PIVOT PLATES AVAILABLE. SEE TABLE FOR TYPES.
- △ TAPPED HOLES ON -03 VERSION ONLY.

030-0450 2 POINT PADDLE HANDLE ASSEMBLY

SPECIFICATION		DESCRIPTION	ITEM	PART NUMBER	DESCRIPTION	QUANTITY
DRAWN BY	JRS 3/18/02	MATERIAL				
CHECKED BY	CRZ 3/18/02	HEAT TREAT				
DESIGN ENG.		FINISH				
MFG. ENG.		PROJECT		CUSTOMER	CUSTOMER PART NUMBER	
QUALITY ENG.		SIZE	D	PART WEIGHT	SURFACE AREA	PRODUCT CODE C11 (030-0450)
TOLERANCES UNLESS OTHERWISE SPECIFIED		REPORT ERRORS TO ENGINEERING DEPARTMENT		DO NOT SCALE DRAWING		SCALE FULL
<p>500 Bailey Avenue New Hampton, Iowa 50659 U.S.A. Tel: 641-394-3188 Fax: 641-394-2392</p> <p>This drawing and the information contained herein is the property of TriMark Corporation and shall not be used for any purpose without our written consent.</p>						PART NAME
						030-0450 2PT PADDLE HANDLE
						SCALE PART NUMBER
						0 FULL 0 PRI11812-XX