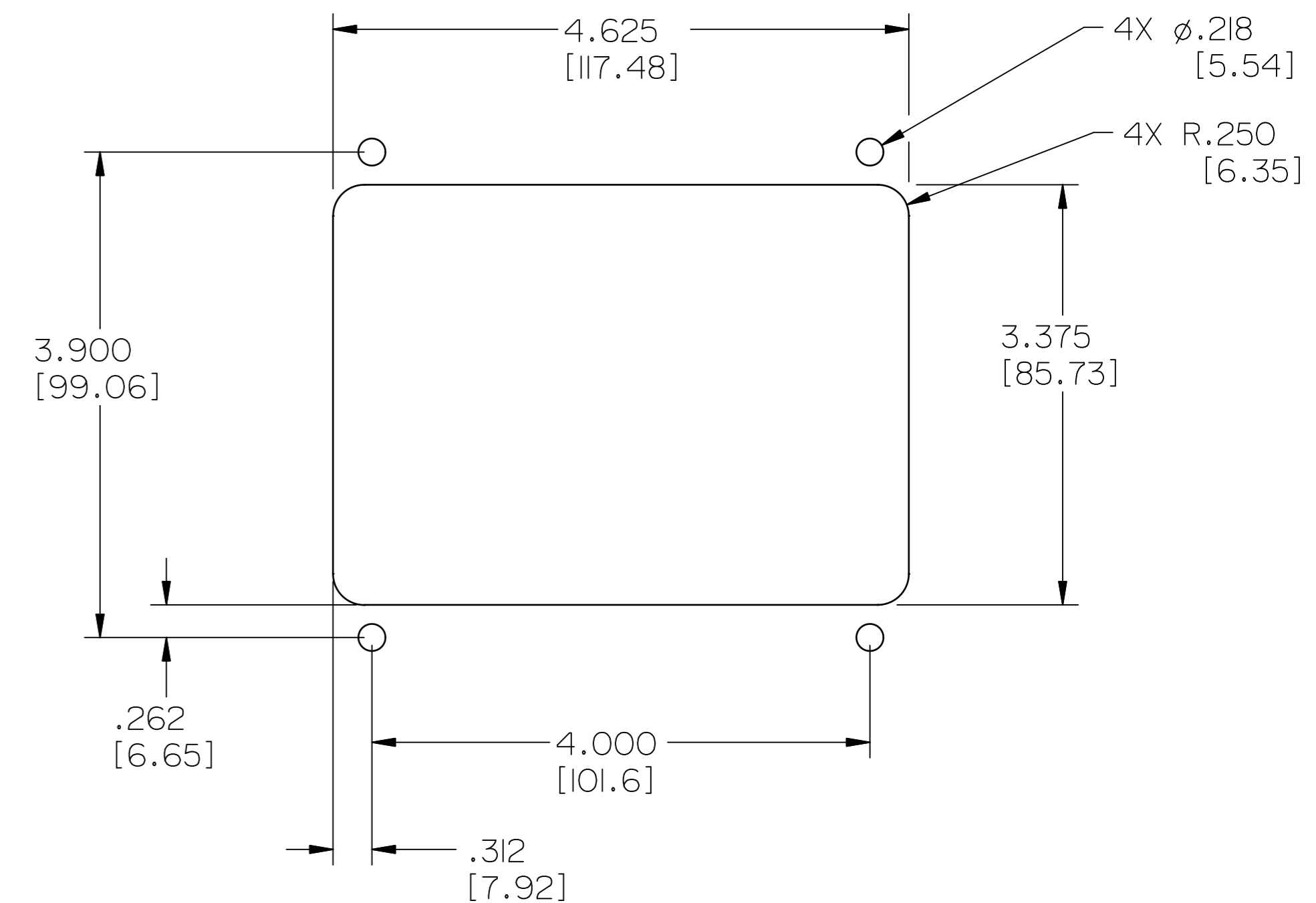
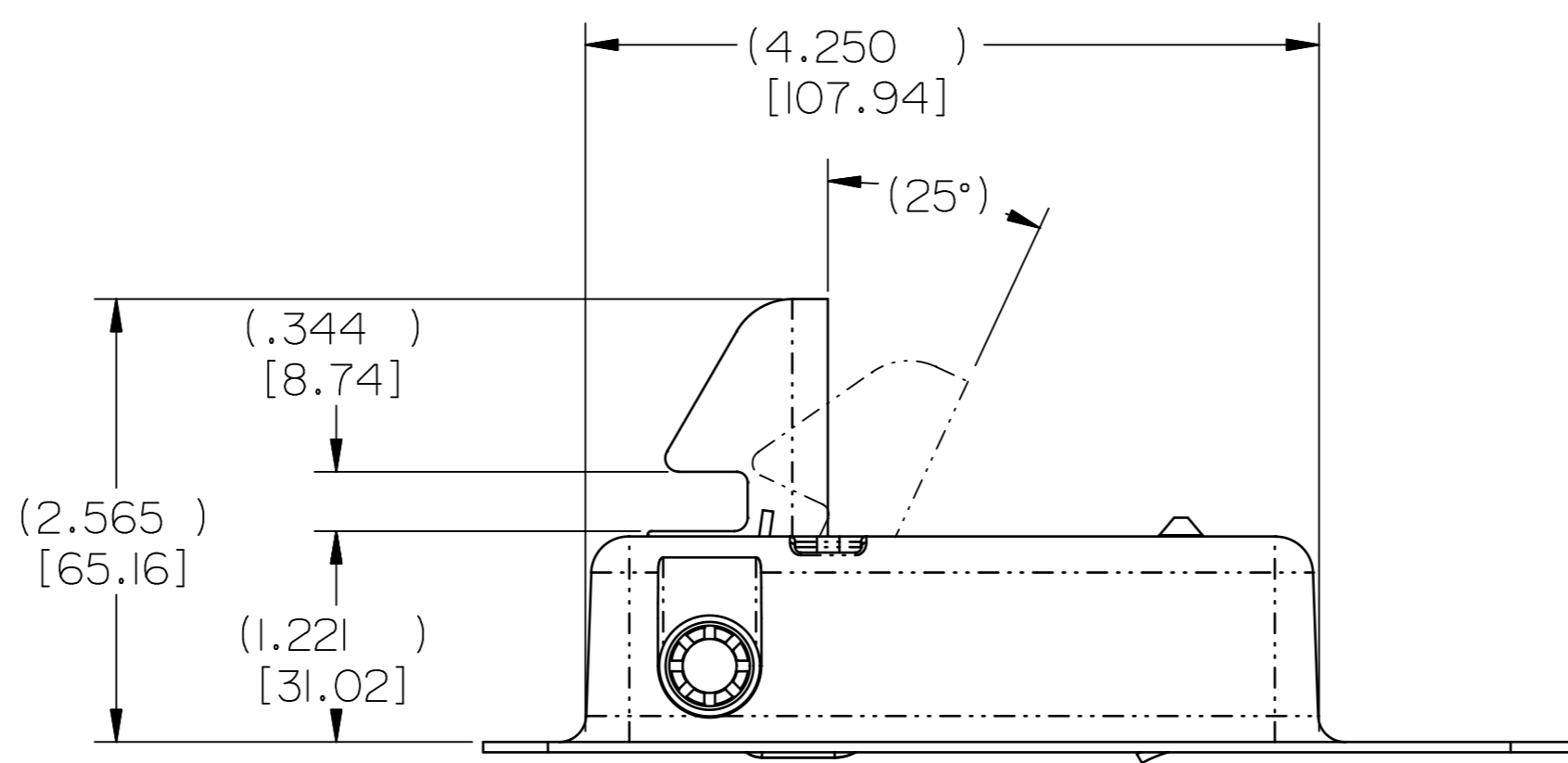
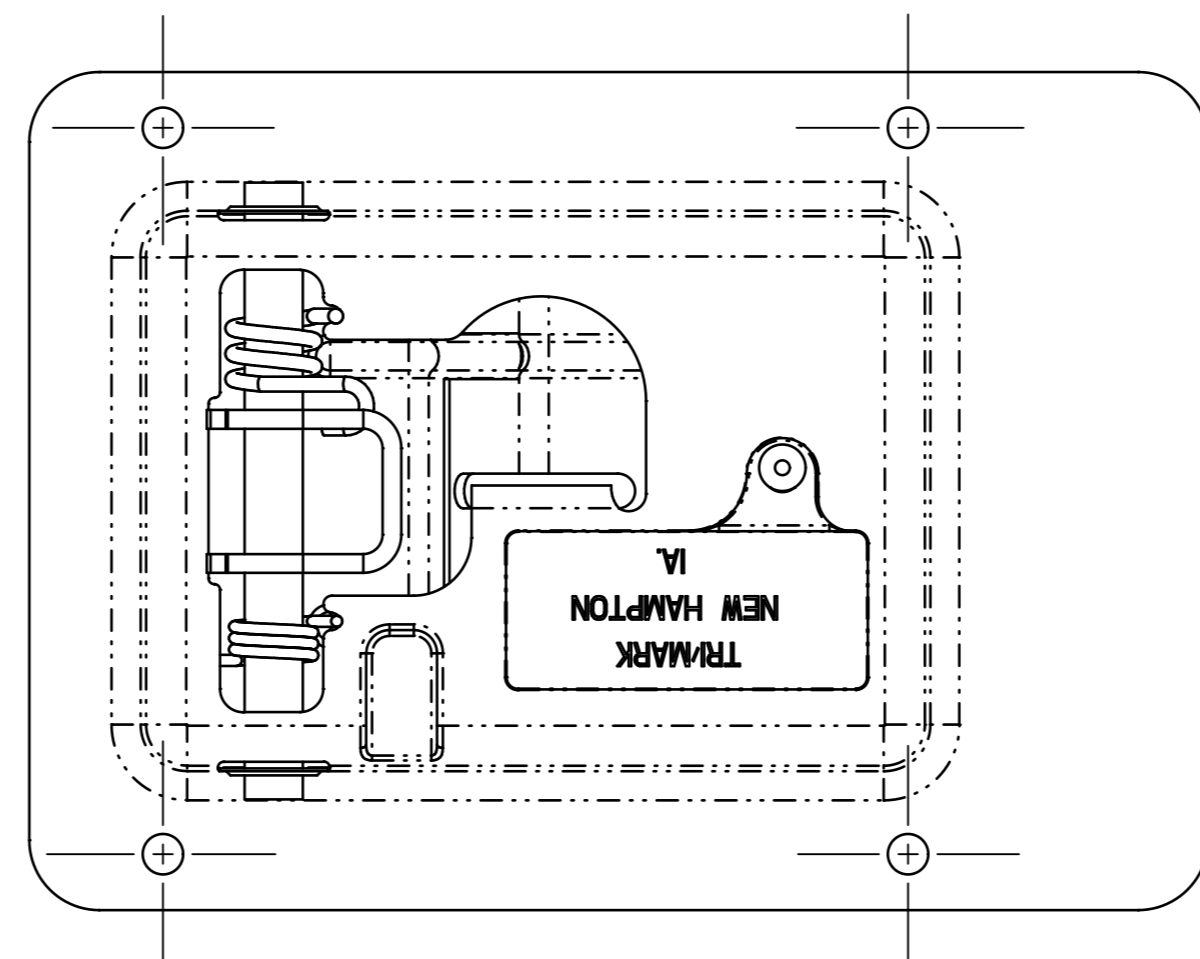
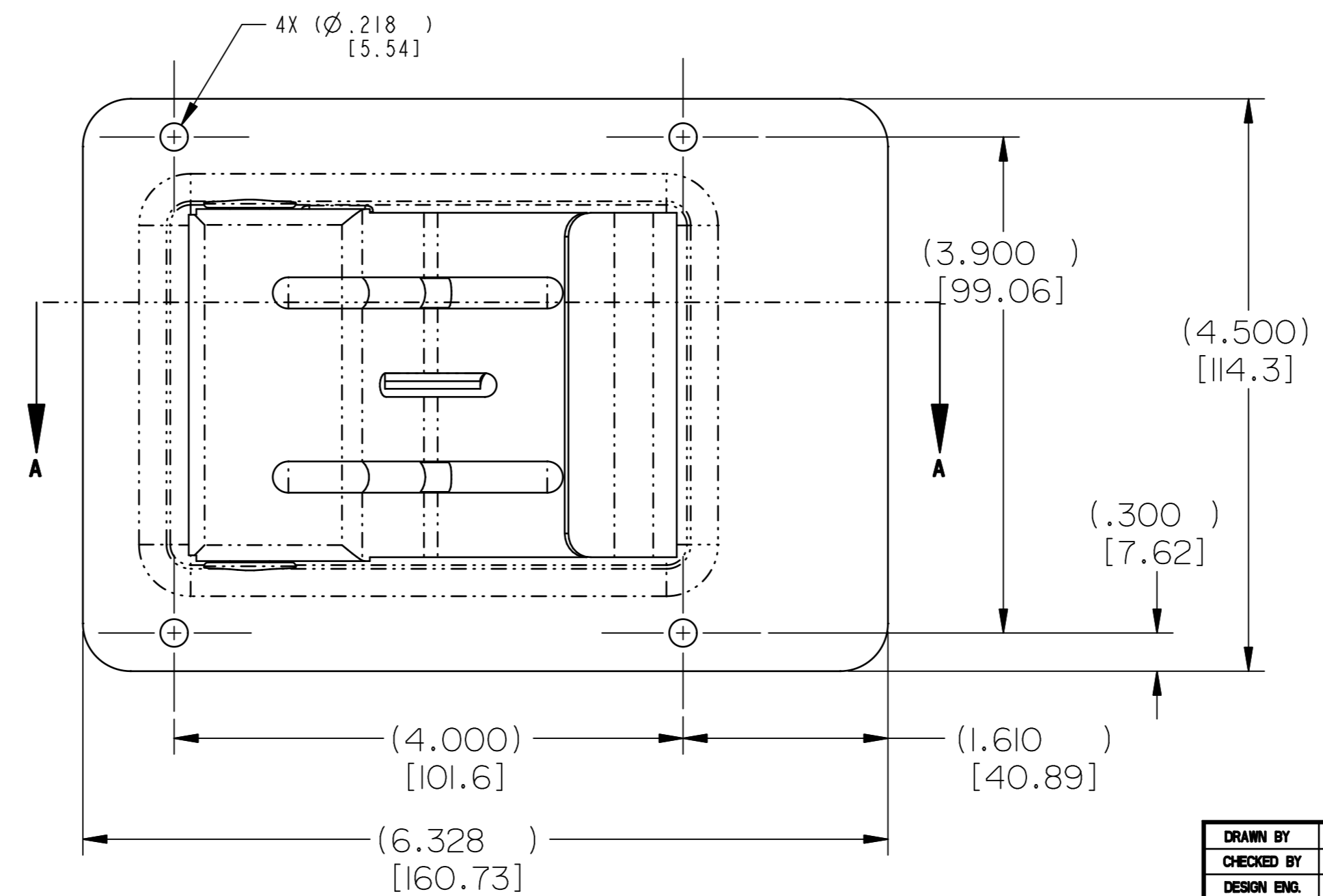
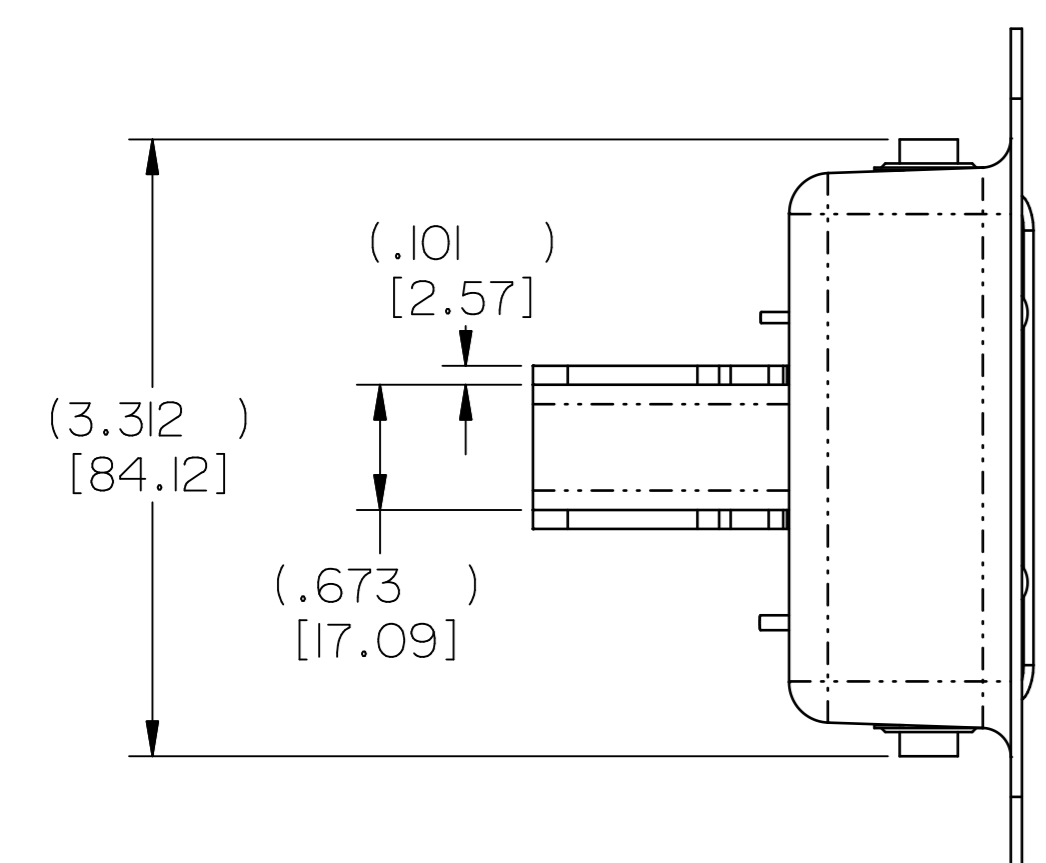
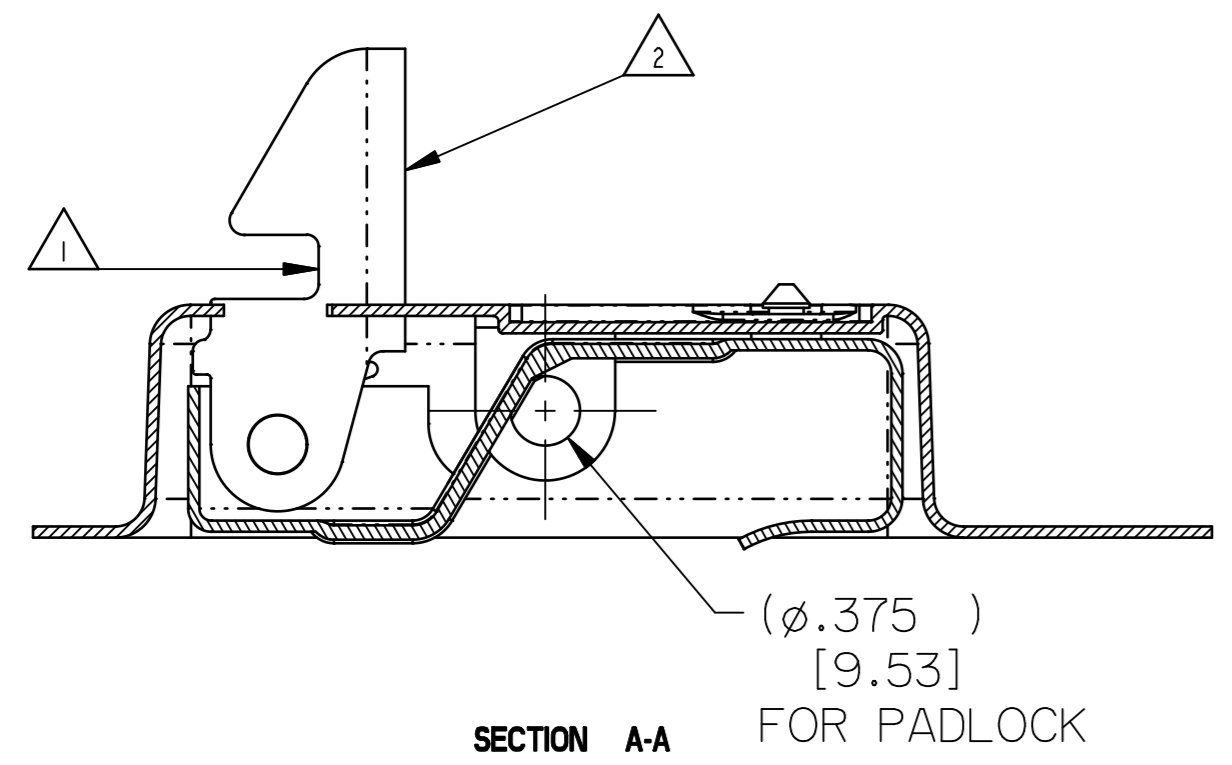


PART NO.	FINISH
11608-01	PAINT, BLACK, LOW GLOSS OVER ELECTROCOAT, CATHOTIC, ACRYLIC EPOXY
11608-16	PLATE, ZINC/COAT, CHROMATE, YELLOW

REVISION	ECO	BY	CHECKED	DESCRIPTION
----------	-----	----	---------	-------------



RECOMMENDED CUTOUT DETAIL



030-0500 PIVOTING CATCH COMPARTMENT LATCH, PADLOCK

NOTES:

- 1 APPROXIMATELY 5 LBS OF FORCE REQUIRED TO MOVE HOOK FROM NORMAL ASSEMBLED POSITION APPLIED TO THE NOSE OF THE HOOK AS SHOWN BY ARROW.
- 2 TRIMARK PART NUMBER AND DATE CODE STAMPING.

SPECIFICATION	DESCRIPTION	ITEM	PART NUMBER	DESCRIPTION	QUANTITY
DRAWN BY: JRS 3/20/02	CHECKED BY: CRZ 3/20/02	MATERIAL:	MATERIAL		
DESIGN ENG.	MFG. ENG.	HEAT TREAT	HEAT TREAT		
QUALITY ENG.	FINISH		SEE FINISH TABLE		
PROJECT		CUSTOMER	CUSTOMER PART NUMBER		
SIZE: D		PART WEIGHT	SURFACE AREA	PRODUCT CODE: C12 (030-0500)	SCALE: FULL
REPORT ERRORS TO ENGINEERING DEPARTMENT		DO NOT SCALE DRAWING		SCALE: FULL	REVISION: 0
PART NAME: ASSY, LCH, COMPT, CTH, PVTG, PADLK		PART NUMBER: PR11608-XX		QUANTITY:	



This drawing and the information contained herein is the property of TriMark Corporation and shall not be used for any purpose without our written consent.