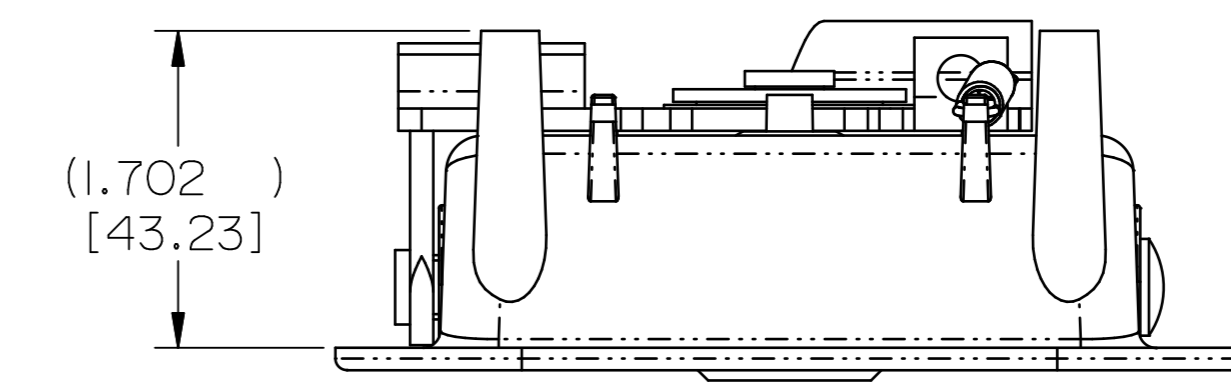
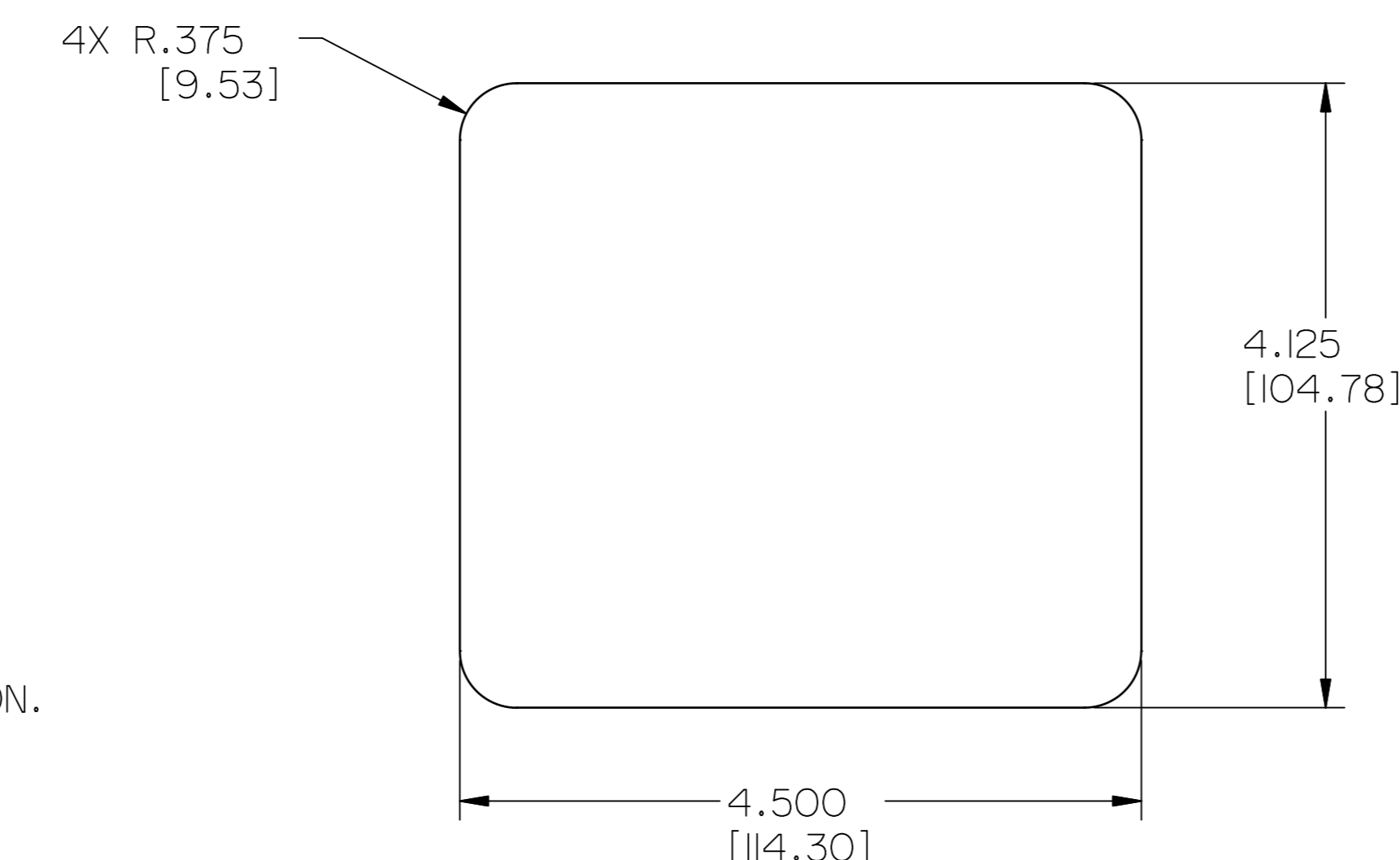
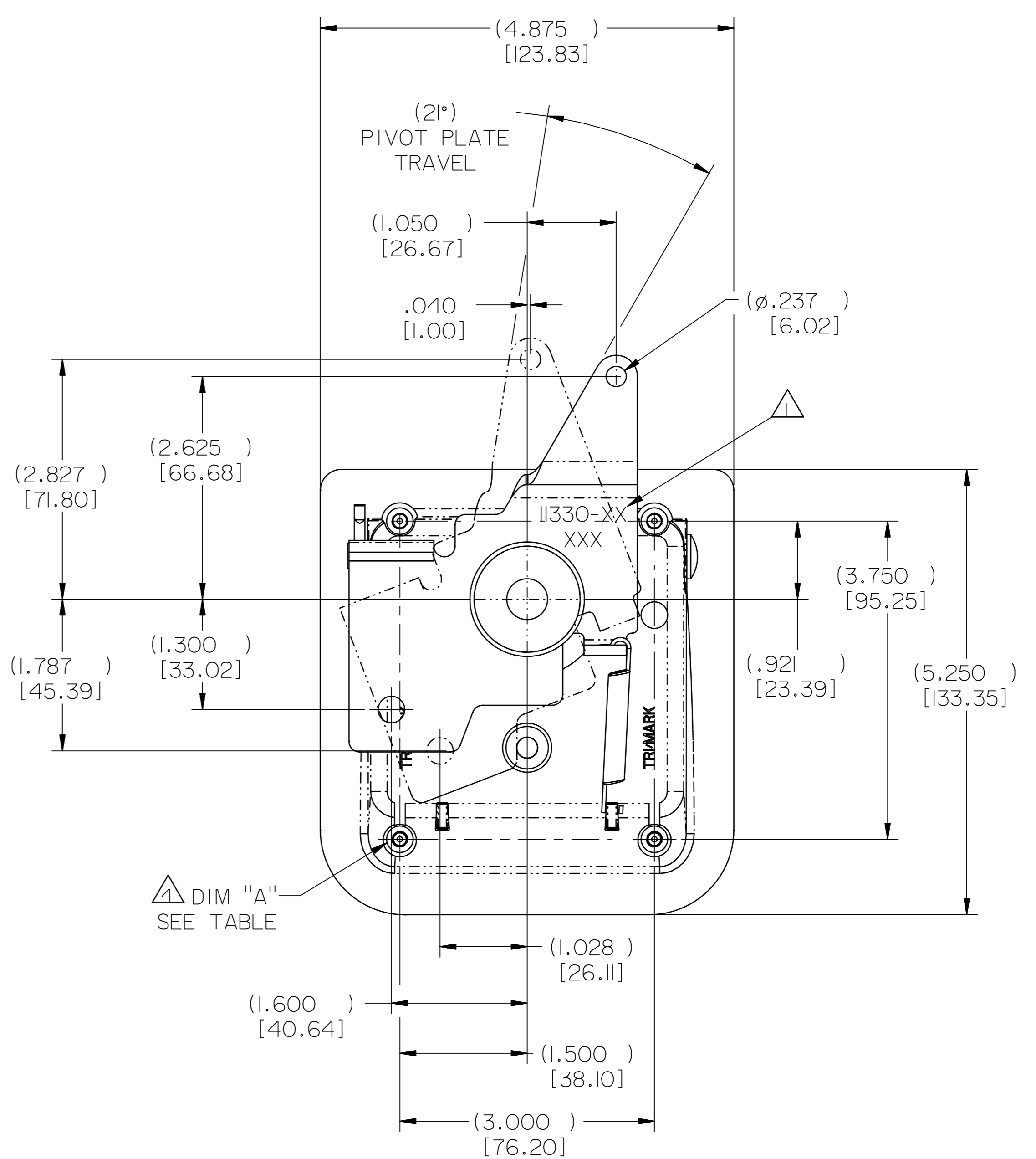
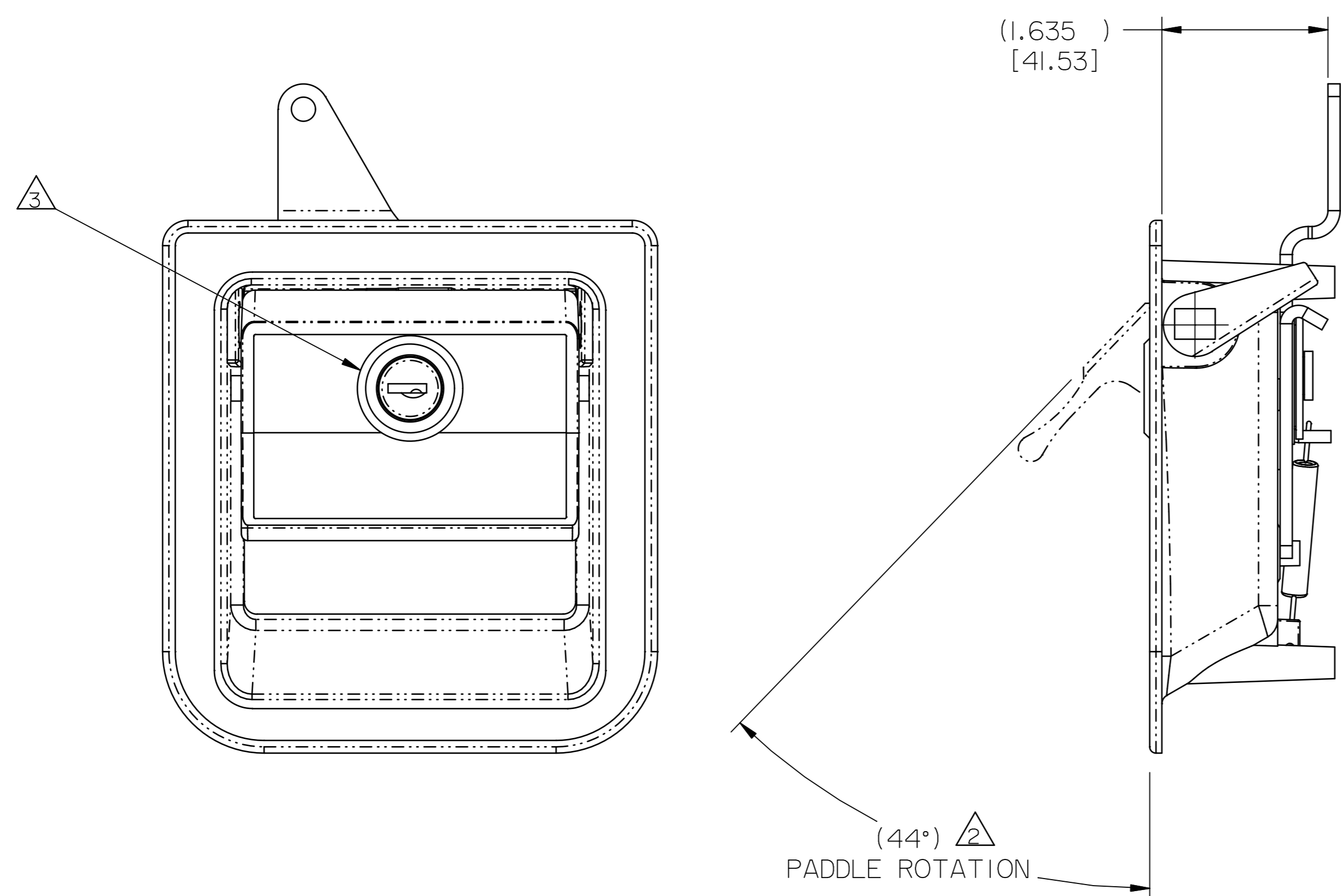


PART NO. PART NAME	DIM "A"	KEY CODE
I1330-01	4X M5 X 0.8-6H ▽.470 [11.94]	AR5148I
I1330-02	4X M5 X 0.8-6H ▽.470 [11.94]	CH75I
I1330-12	4X 10-24UNC-2B ▽.470 [11.94]	CH75I



030-0200 FLUSH PADDLE HANDLE

- NOTES:
- △1 TRIMARK PART NUMBER AND DATE CODE.
 - △2 PADDLE DOES NOT MOVE WHEN IN THE LOCKED POSITION.
 - △3 SHIPPED IN THE UNLOCKED POSITION AS SHOWN.
 - △4 TORQUE MOUNTING FASTENERS TO 7 FT-LBS MAX.

SPECIFICATION		DESCRIPTION	ITEM	PART NUMBER	DESCRIPTION	QUANTITY
DRAWN BY	JRS 3/11/02	MATERIAL				
CHECKED BY	CRZ 3/11/02	HEAT TREAT				
DESIGN ENG.		FINISH	PAINT, BLACK, MEDIUM GLOSS			
MFG. ENG.		PROJECT	CUSTOMER	CUSTOMER PART NUMBER		
QUALITY ENG.		SIZE	PART WEIGHT	SURFACE AREA	PRODUCT CODE	
TOLERANCES UNLESS OTHERWISE SPECIFIED		INCH [METRIC]		SCALE		
FRACTIONS: 1/16, 1/8, 1/4, 3/8, 1/2, 5/8, 3/4, 7/8		D		C05 (030-0200)		
DECIMALS: 0.0005, 0.001, 0.002, 0.005, 0.010, 0.015, 0.020, 0.030, 0.040, 0.050, 0.060, 0.070, 0.080, 0.090, 0.100, 0.125, 0.150, 0.175, 0.200, 0.250, 0.300, 0.375, 0.500, 0.625, 0.750, 1.000		REPORT ERRORS TO ENGINEERING DEPARTMENT		DO NOT SCALE DRAWING		
				SCALE	REVISION	PART NUMBER
				FULL	0	PRI1330-XX

TriMark
 500 Bailey Avenue
 New Hampton, Iowa 50659 U.S.A.
 Tel: 641-394-3188
 Fax: 641-394-2392

This drawing and the information contained herein is the property of TriMark Corporation and shall not be used for any purpose without our written consent.