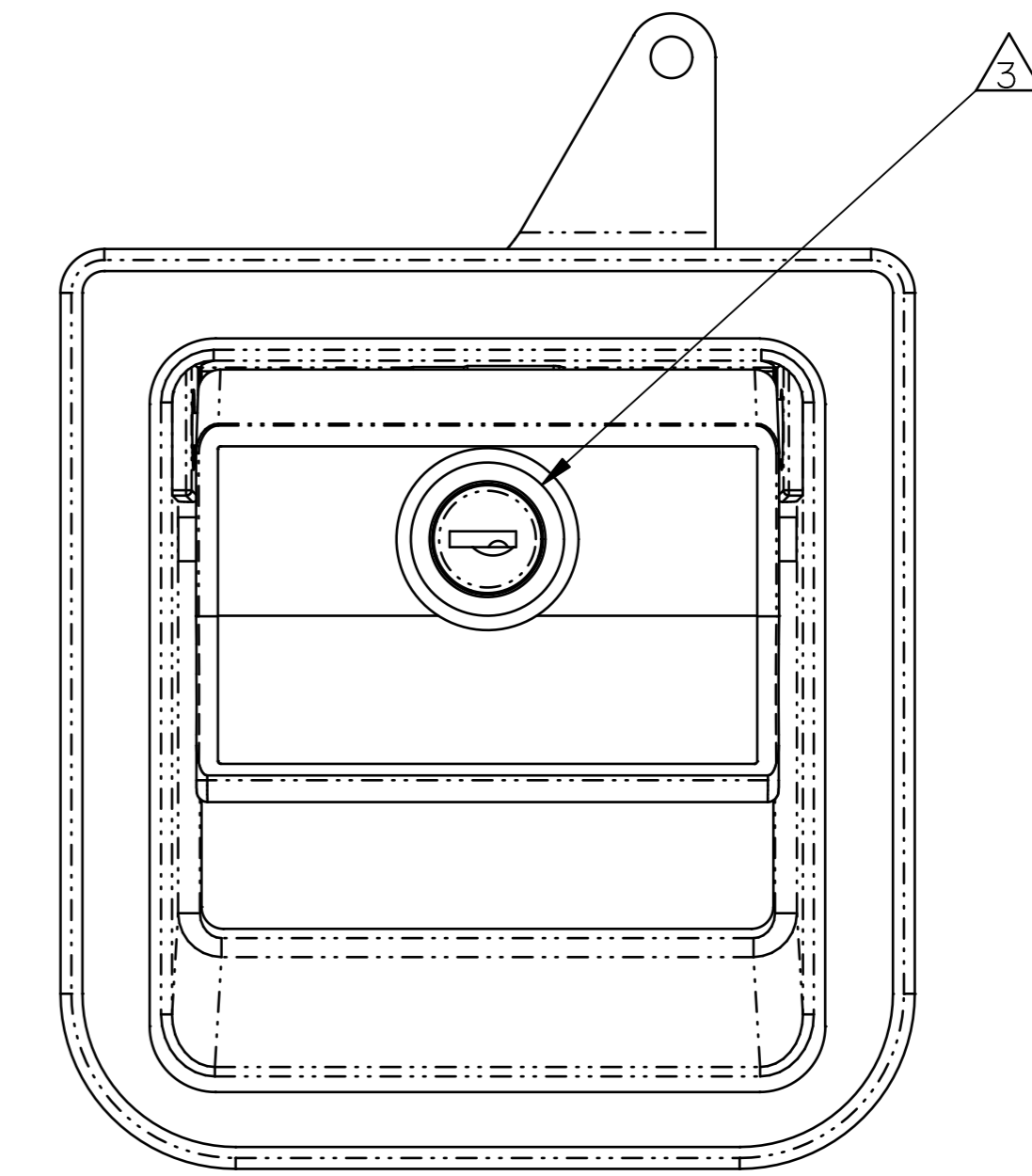
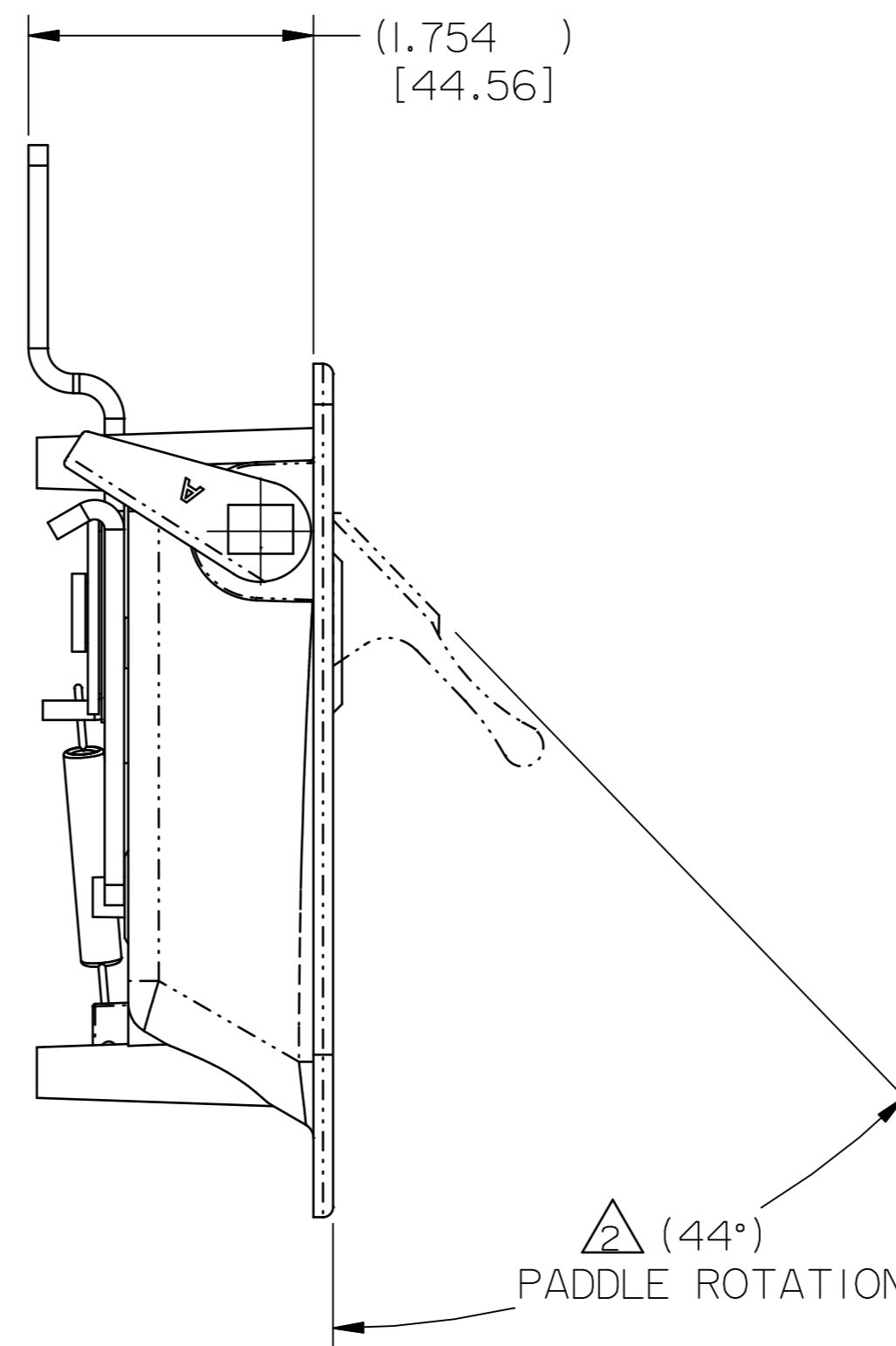
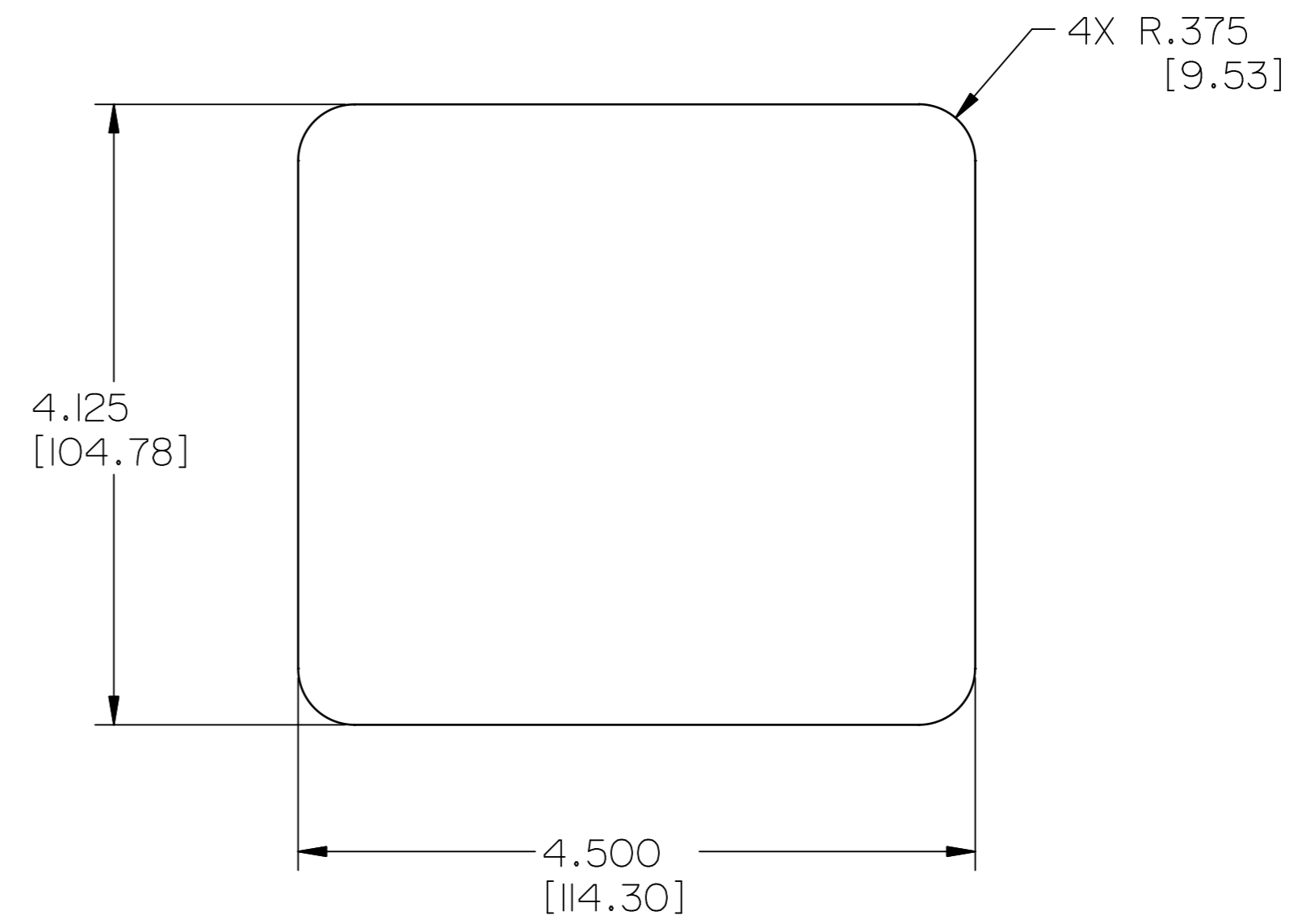
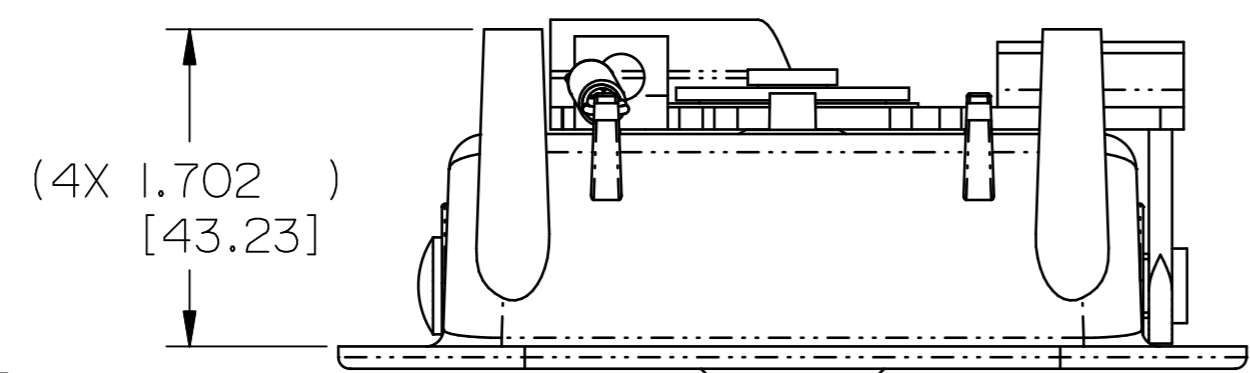
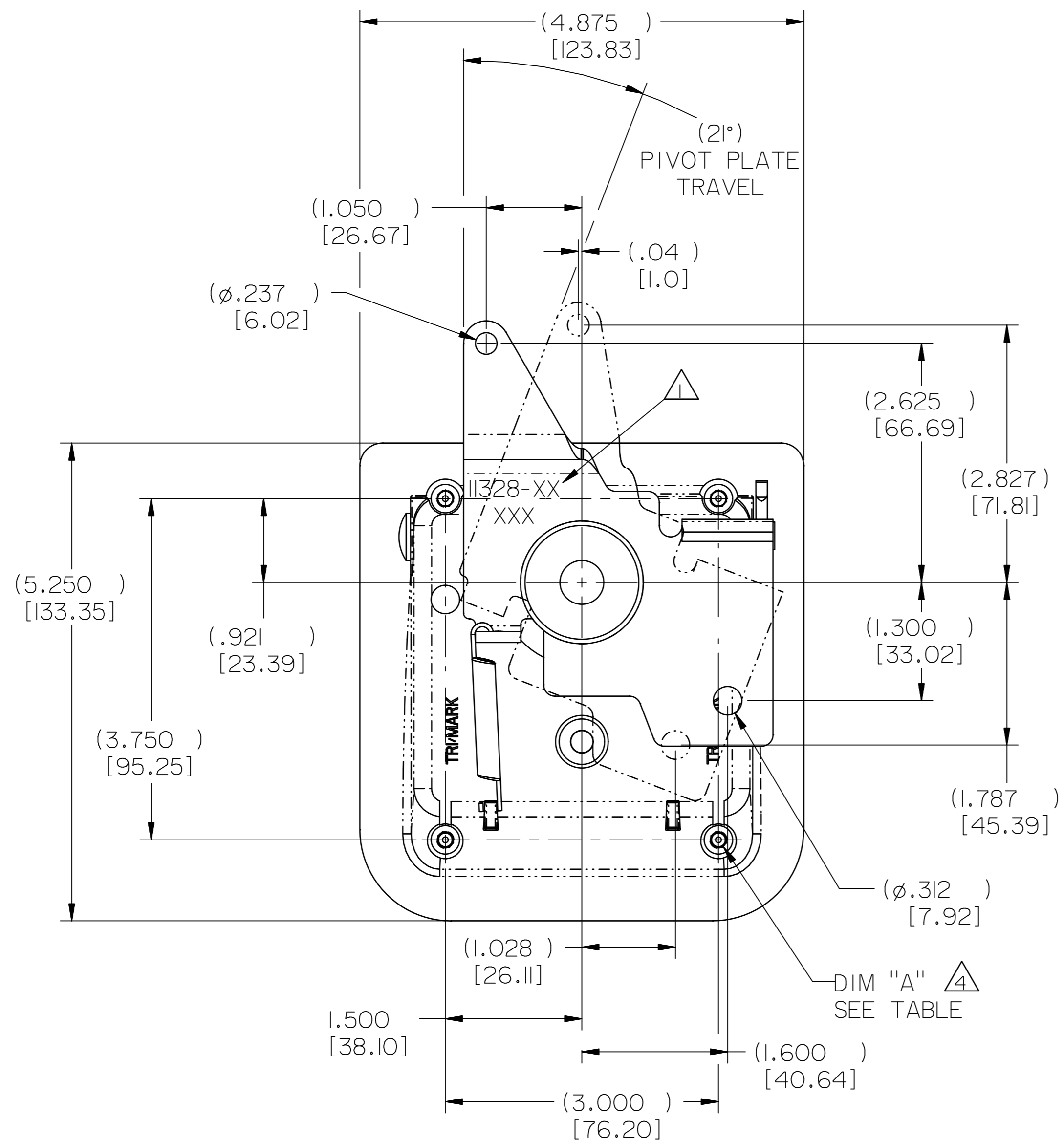


PART NO. PART NAME	DIM "A"	KEY CODE
11328-02	4X M5 X 0.8-6H ▽.470 [11.94]	AR5148I
11328-03	4X M5 X 0.8-6H ▽.470 [11.94]	CH75I
11328-12	4X 10-24 UNC-2B ▽.470 [11.94]	CH75I



NOTES:

- 1 TRIMARK PART NUMBER AND DATE CODE
- 2 PADDLE DOES NOT MOVE WHEN IN THE LOCKED POSITION.
- 3 SHIPPED IN THE UNLOCKED POSITION AS SHOWN.
- 4 TORQUE MOUNTING FASTENERS TO 7 FT-LBS MAX.

030-0200 FLUSH PADDLE HANDLE

SPECIFICATION		DESCRIPTION		ITEM	PART NUMBER	DESCRIPTION	QUANTITY
DRAWN BY	JRS 3/8/02	MATERIAL					
CHECKED BY	CRZ 3/8/02	HEAT TREAT					
DESIGN ENG.		FINISH					
MFG. ENG.		PAINT, BLACK, MEDIUM GLOSS					
QUALITY ENG.		PROJECT					
UNLESS OTHERWISE SPECIFIED		CUSTOMER					
INCH (METRIC)		CUSTOMER PART NUMBER					
SIZE		PART WEIGHT	SURFACE AREA	PRODUCT CODE	PART NAME		
D				C05 (030-0200)	FLUSH PADDLE HANDLE		
REPORT ERRORS TO ENGINEERING DEPARTMENT		DO NOT SCALE DRAWING		SCALE	REVISION	PART NUMBER	
				FULL	0	PR11328-XX	

**TriMark**  
500 Bailey Avenue  
New Hampton, Iowa 50659 U.S.A.  
Tel: 641-394-3188  
Fax: 641-394-2392

This drawing and the information contained herein is the property of TriMark Corporation and shall not be used for any purpose without our written consent.