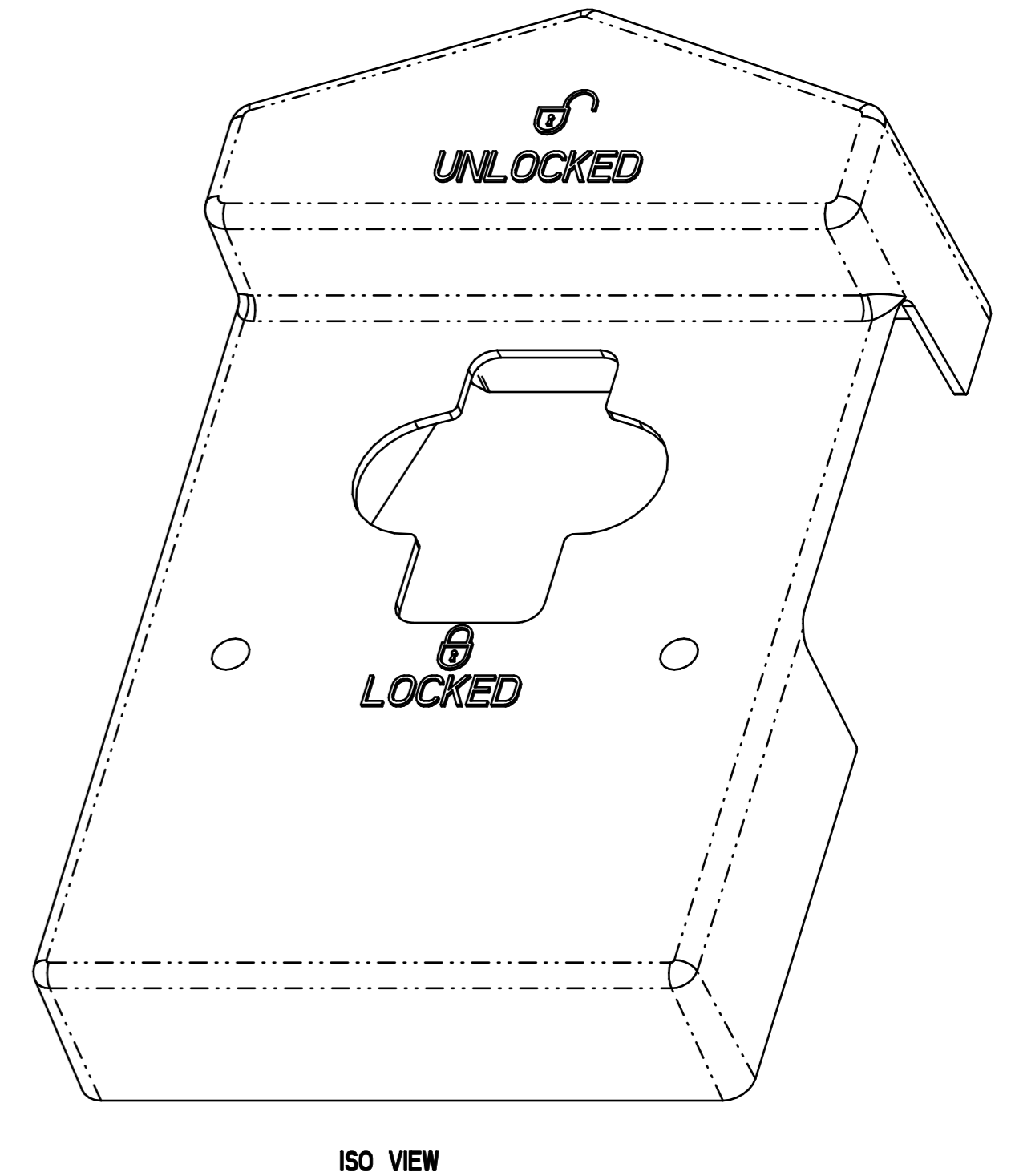
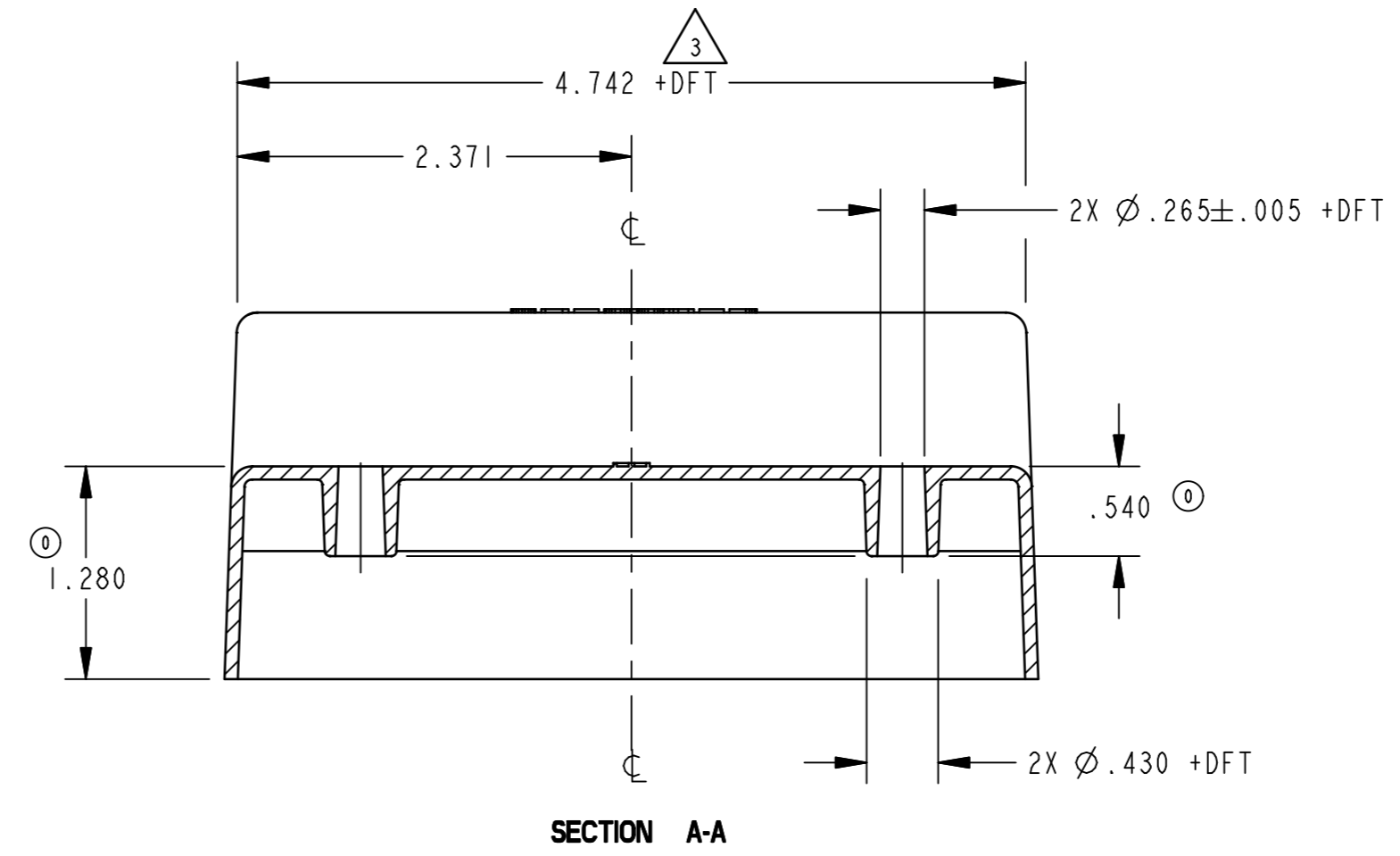
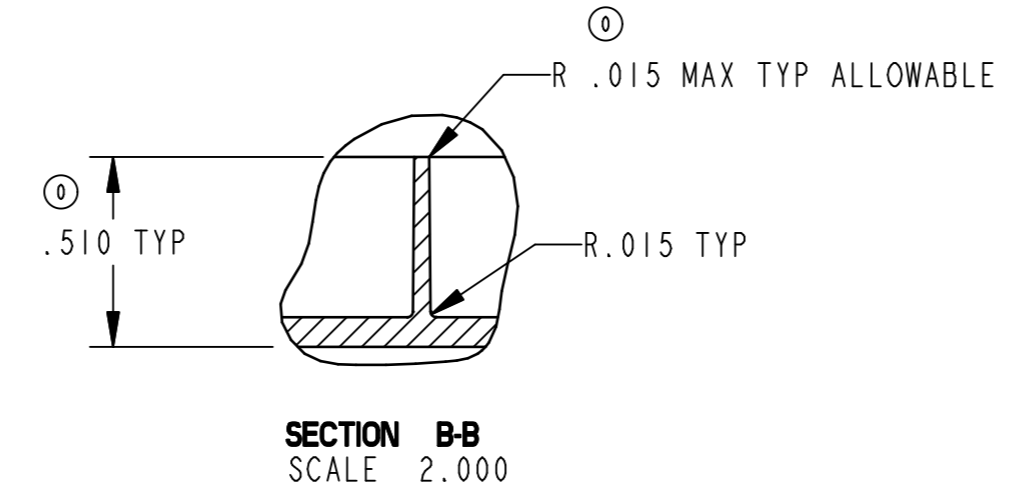
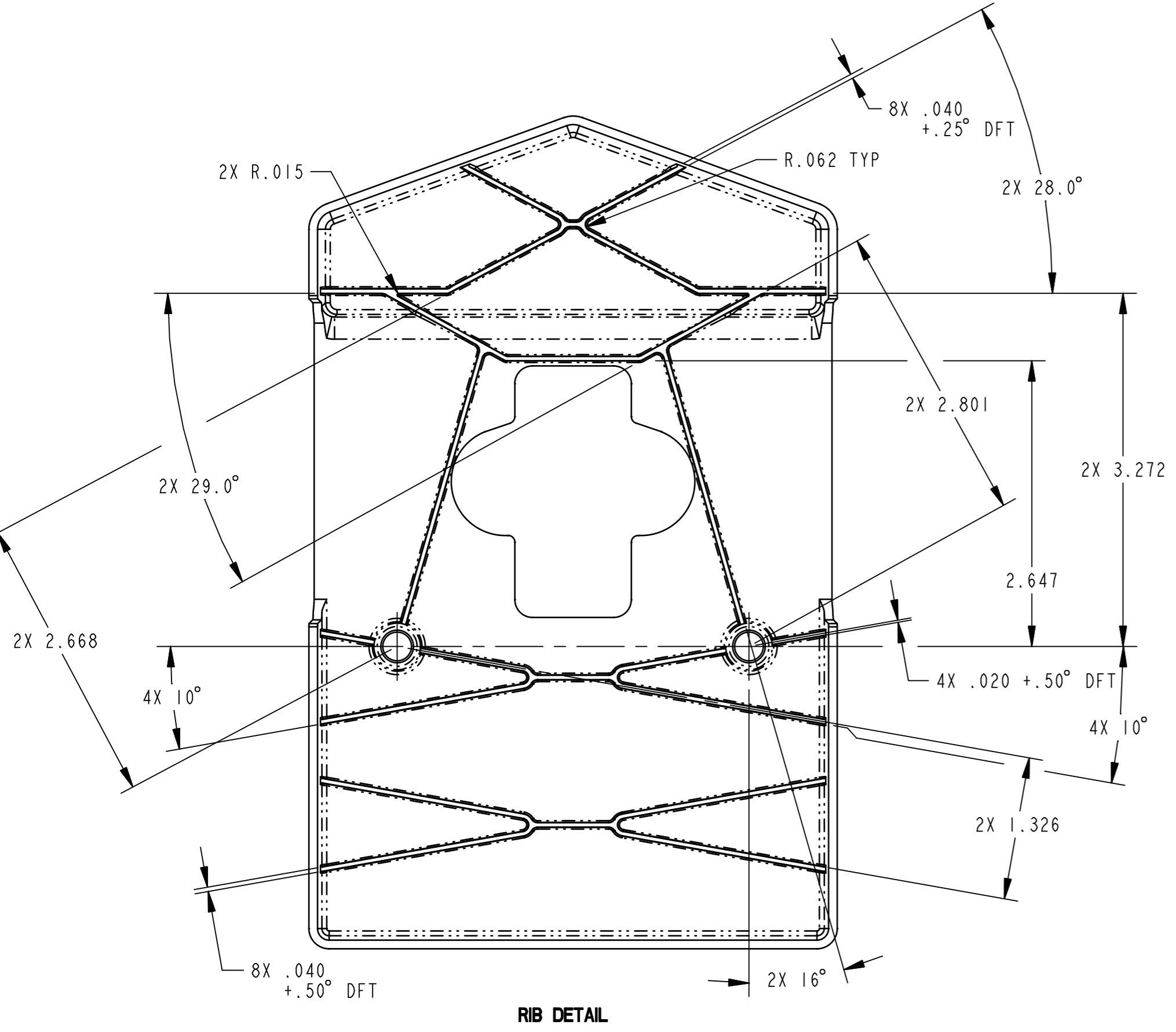
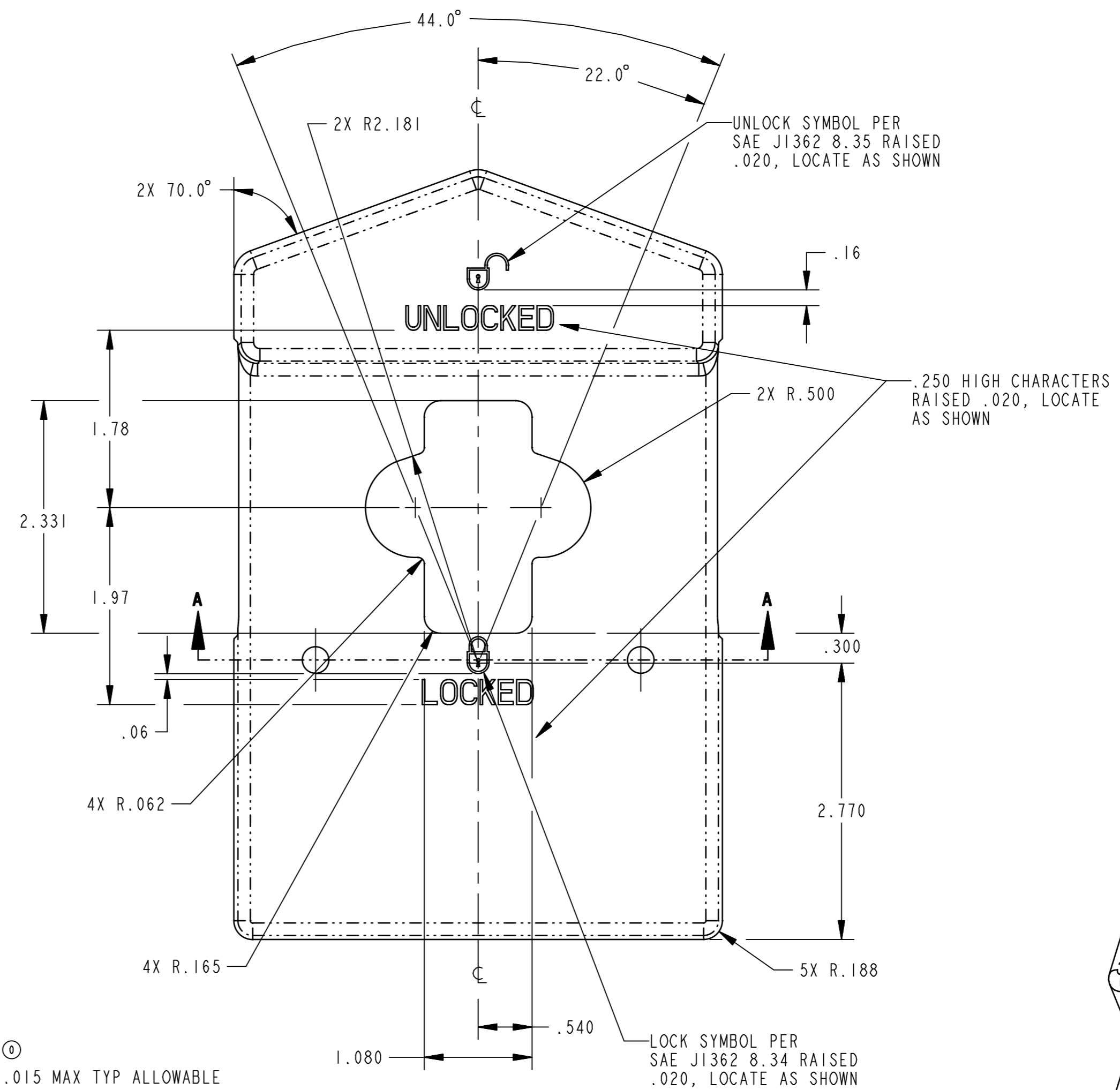
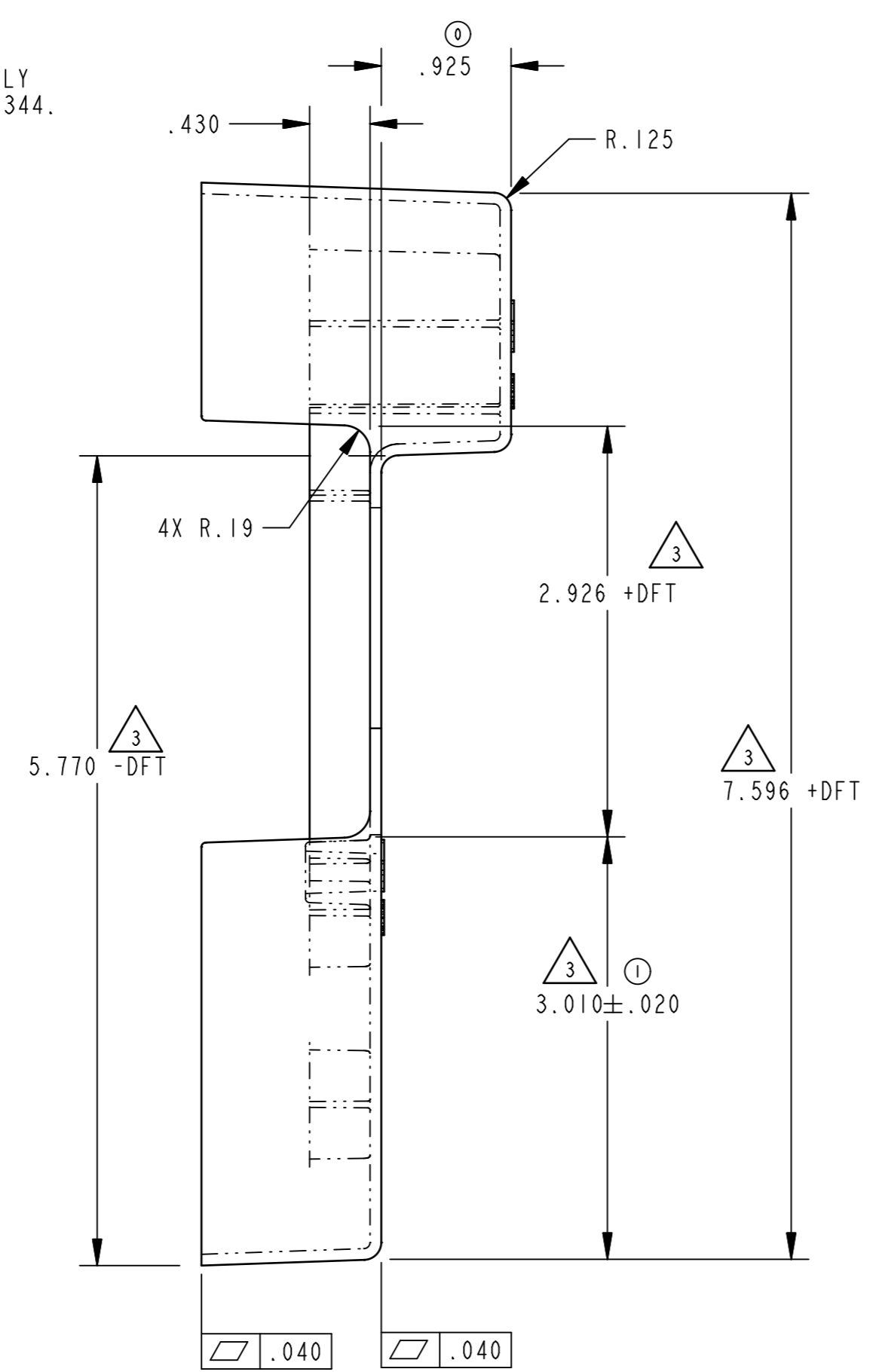
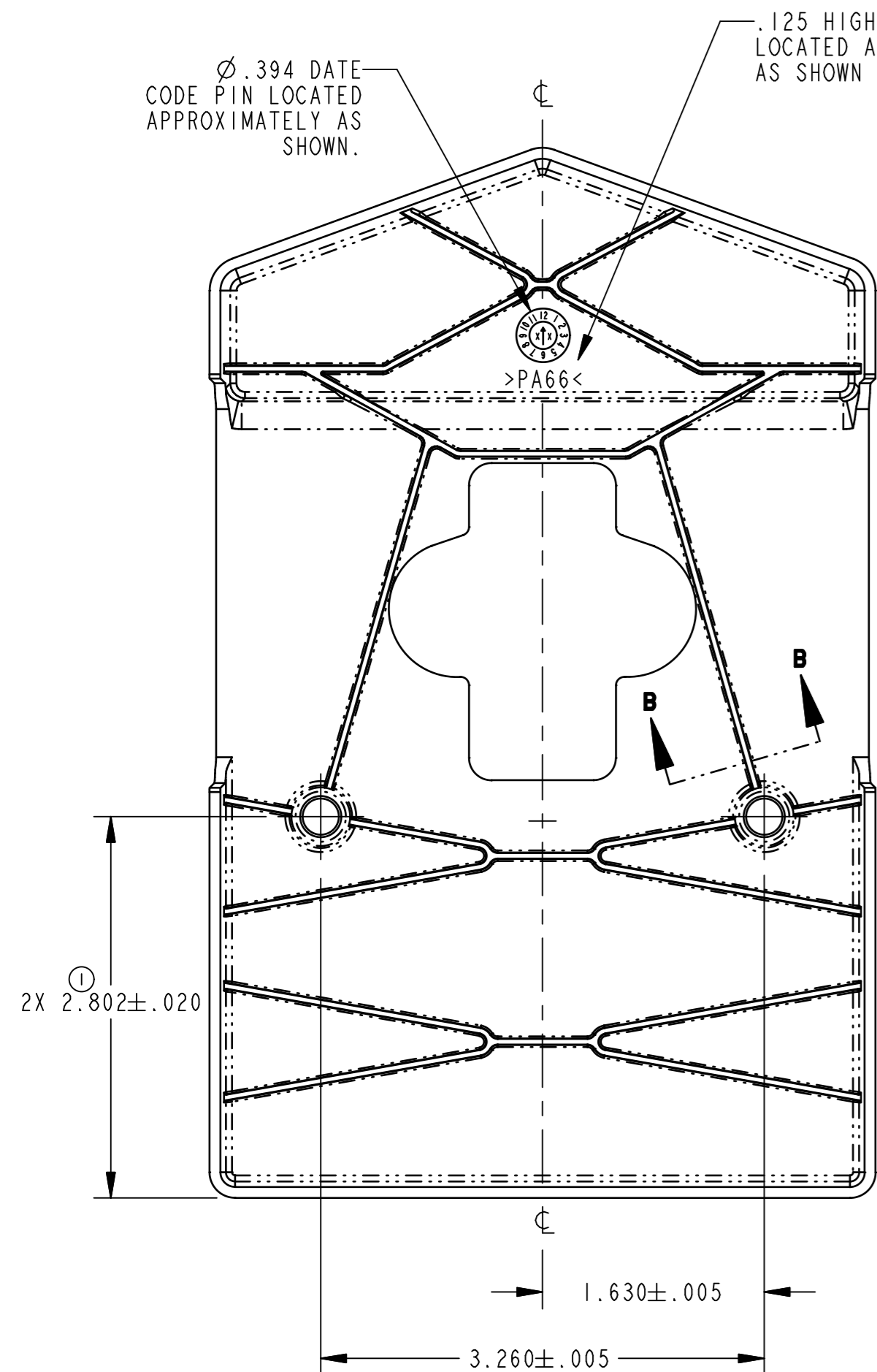


REV.	ECO	BY	CHKD	REVISION
0	RLSE	MLL	JMH	RELEASED FOR PRODUCTION; ADDED PRODUCT CODE: .925 WAS .825, 1.280 WAS 1.330, .510 TYP WAS .560 TYP, .540 WAS .590, ADDED R.015 MAX TYP ALLOWABLE
1	16760	BJB	JBS	2X 2.802±.020 WAS 2X 2.802; 3.010±.020 WAS 3.010; ADDED FINISH



NOTES: UNLESS OTHERWISE SPECIFIED;
 1. ALL FILLETS AND RADII TO BE R.031.
 2. .080 TYPICAL WALL THICKNESS.
 3. DIMENSIONS ARE TO THEORETICAL INTERSECTIONS.
 4. 2° DRAFT/SIDE.

SPEC	DESCRIPTION	ITEM	PART NO.	DESCRIPTION	QTY.
DRAWN BY: CJW 10/17/96	MATL: DUPONT ZYTEL ST801 SUPER TOUGH NYLON				
CHECKED BY: KPE 10/20/96					
DESIGN ENG: MLL 3/23/00					
INFG. ENG:	HEAT TREAT				
QUALITY ENG:					
UNLESS OTHERWISE SPECIFIED					
ANSI Y14.5M-1982					
DIMENSIONS ANGLES					
X.X ±.1 X° ±3°					
X.XX ±.03 X.X° ±1.0°					
X.XXX ±.010 X.XX° ±.50°					
FINISH: NO FINISH ①					
PROJECT: 92114 CUSTOMER: CUSTOMER PART NO.:					
SIZE: D PART WT. SURFACE AREA PROD CODE: K16 (100-0900)					
FORM 163-210 REV. 1.0 10/15/93					
REPORT ERRORS TO ENGINEERING DEPT.			DO NOT SCALE DRAWING		
PART NAME: COVER					
SCALE: FULL REV. 1 PART NO. 14907-01					



THIS DRAWING AND THE INFORMATION CONTAINED HEREIN IS THE PROPERTY OF TRI/MARK CORP. AND SHALL NOT BE USED FOR ANY PURPOSE WITHOUT OUR WRITTEN CONSENT.