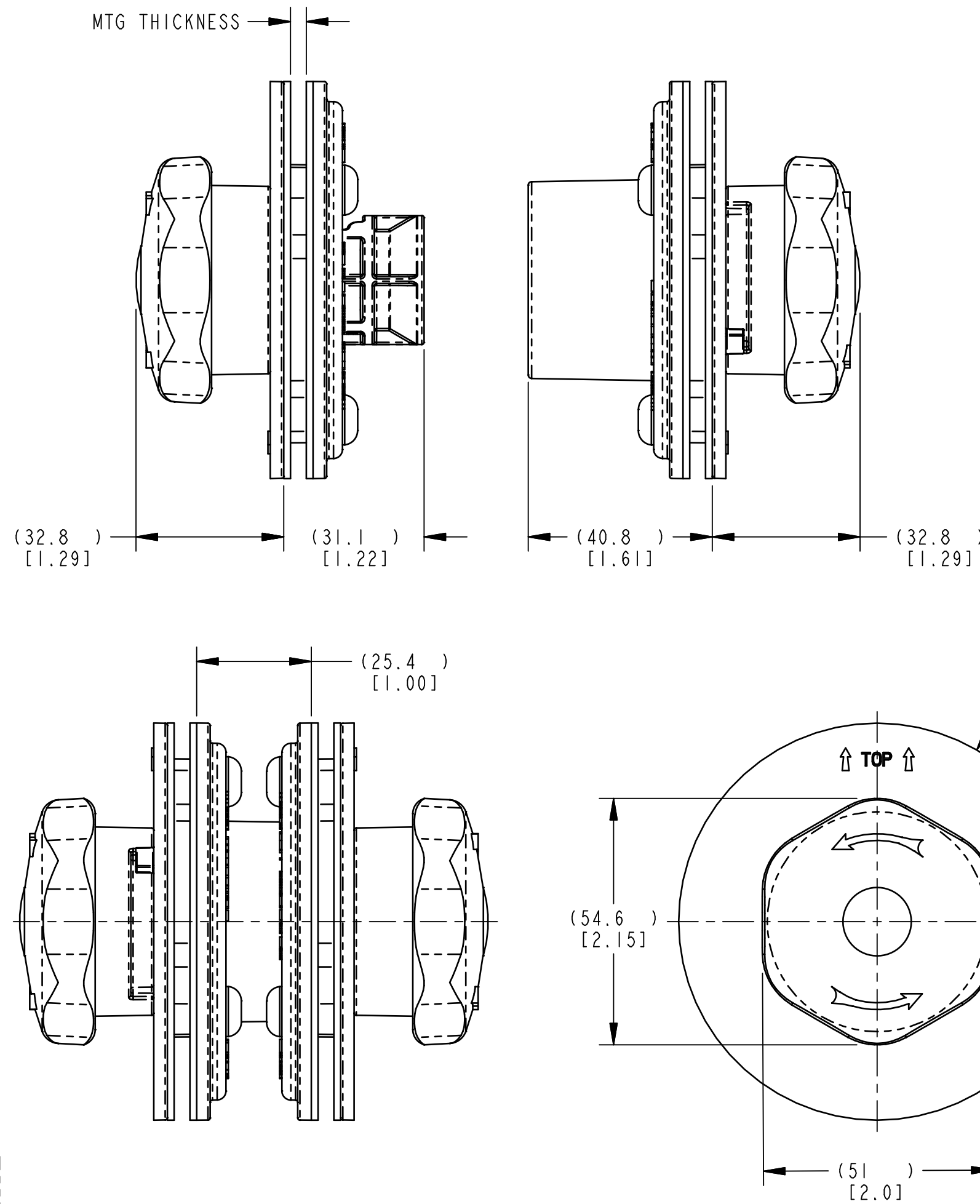
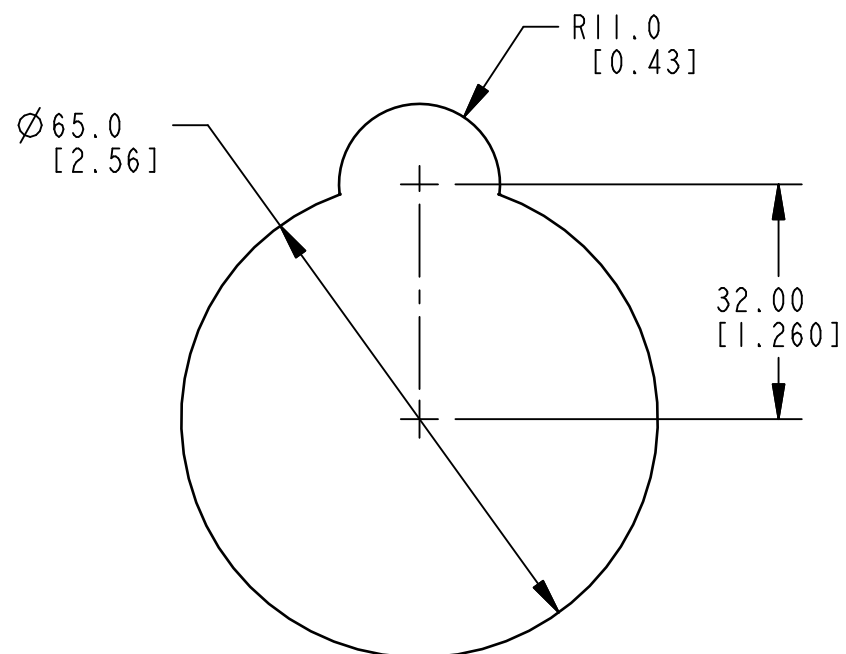
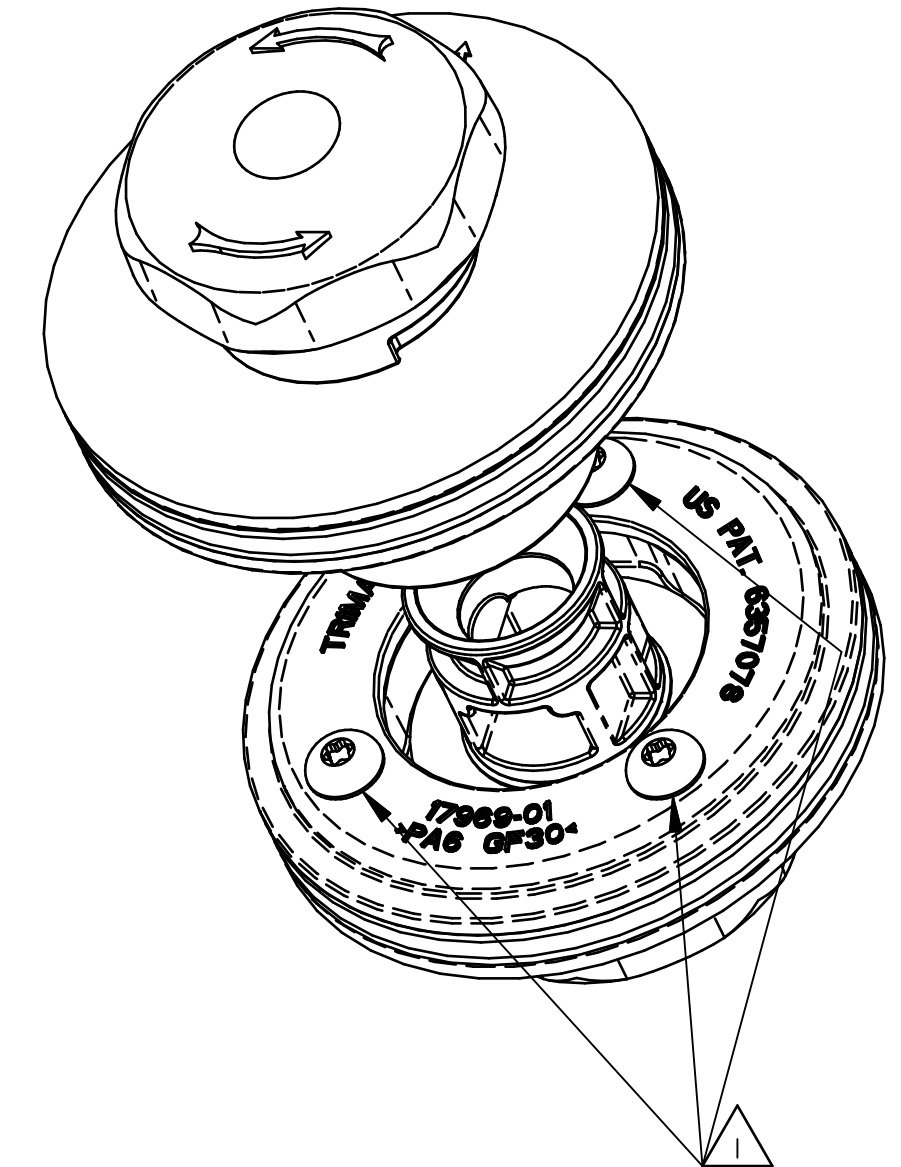


REVISION	ECO	BY	CHECKED	DESCRIPTION
0	RLSE	CJH 10/04/02	GCL 10/04/02	RELEASED

PART NO.	PART NAME	MOUNTING THICKNESS
19375-01	SET, DUAL RELEASE, 5-6MM MTG, DHO	5-6MM
19375-02	SET, DUAL RELEASE, 3-4MM MTG, DHO	3-4MM



- NOTE:
- TORQUE MOUNTING FASTENERS TO 2.82-3.39 N-m [25-30IN-LBS.]
  - MAX. TRAVEL IS 90° OF ROTATION.
  - RELEASE POINT IS 45° OF ROTATION.



RECOMMENDED DOOR CUT-OUT

METRIC

SPECIFICATION	DESCRIPTION	ITEM	PART NUMBER	DESCRIPTION	QUANTITY
DRAWN BY: CJH 09/27/02	CHECKED BY: RLM 09/27/02	DESIGN ENG.: CJH 10/04/02	MFG. ENG.:	QUALITY ENG.:	MATERIAL:
TOLERANCES UNLESS OTHERWISE SPECIFIED ASME Y14.5M-1994					HEAT TREAT:
DIMENSIONS: X ±.3, X.X ±.8, X.XX ±.25					FINISH:
ANGLES: X° ±3°, X.X° ±1.0°, X.XX° ±.50°					PROJECT: 98093
MATERIAL: (Symbol)					CUSTOMER:
HEAT TREAT:					CUSTOMER PART NUMBER:
FINISH:					PRODUCT CODE: N01 [130-0100]
SIZE: C					REPORT ERRORS TO ENGINEERING DEPARTMENT
DO NOT SCALE DRAWING					SCALE: FULL
REVISION: 0					PART NUMBER: PRI9375

**TriMark**

500 Bailey Avenue  
New Hampton, Iowa 50659 U.S.A.  
Tel: 641-394-3188  
Fax: 641-394-2392

This drawing and the information contained herein is the property of TriMark Corporation and shall not be used for any purpose without our written consent.

PART NAME: 130-0100, DUAL RELEASE, DHO