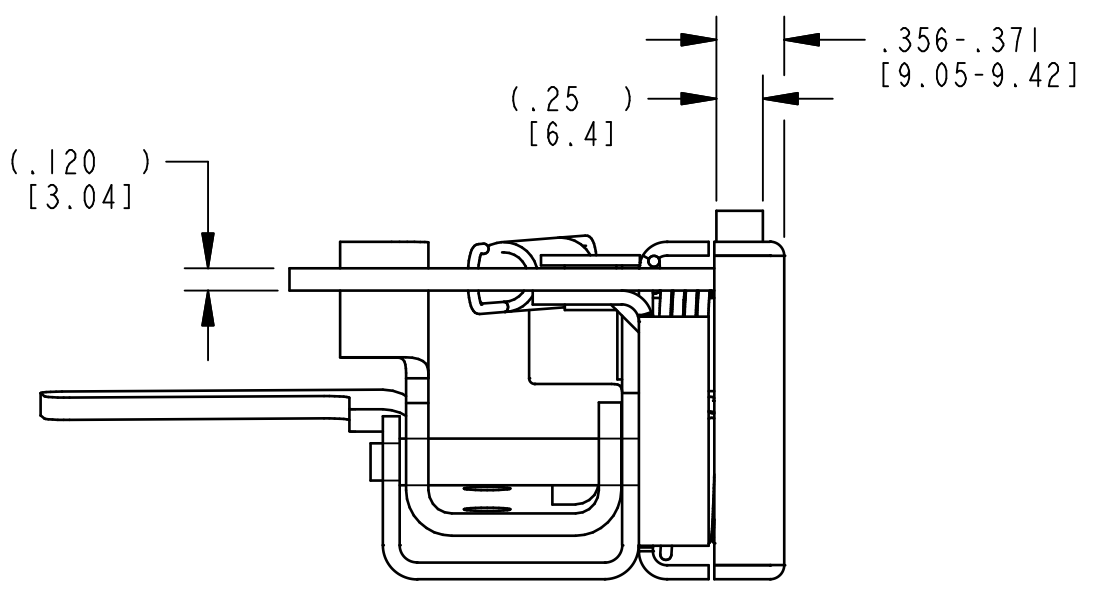
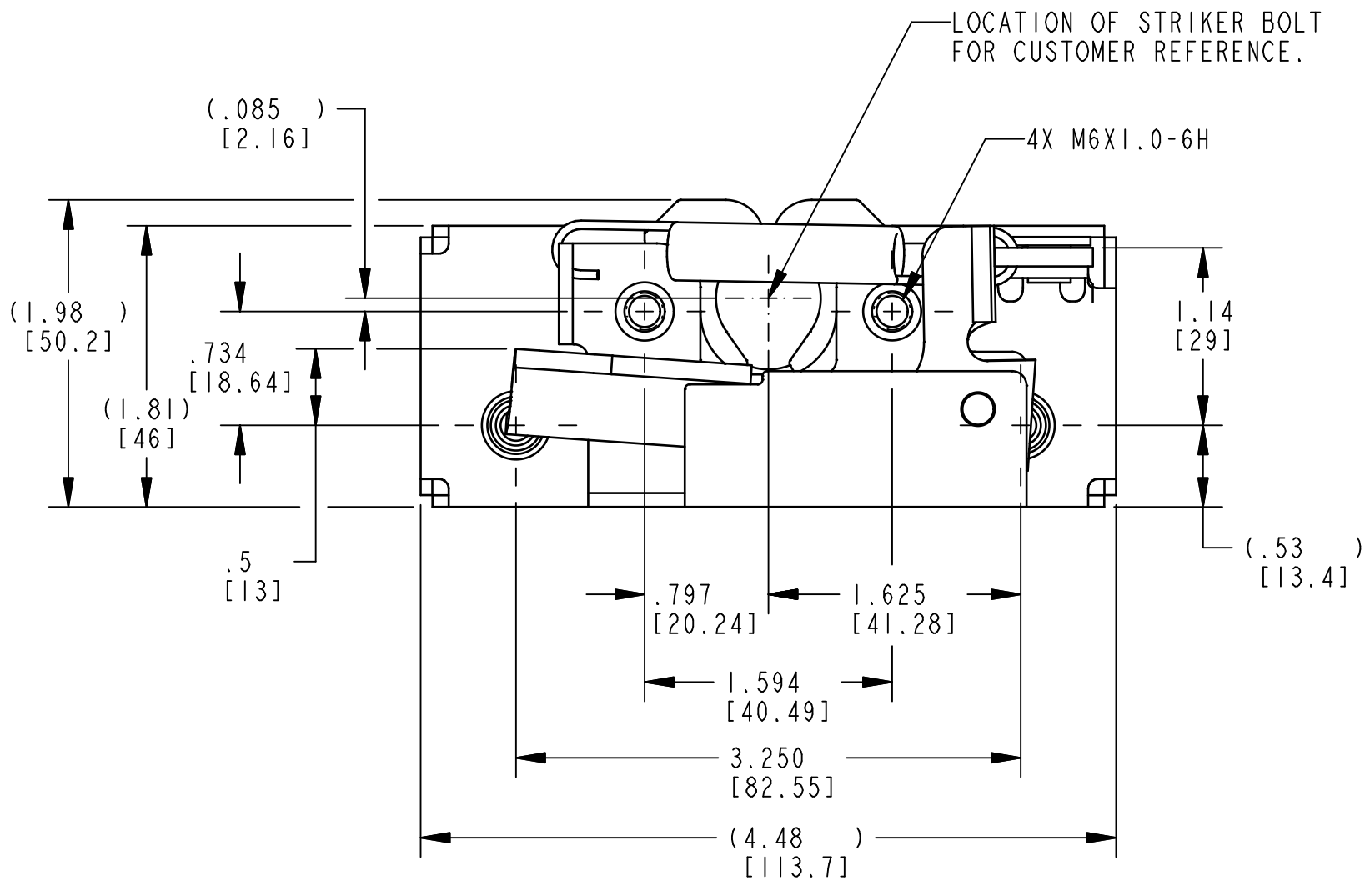

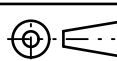


NOTES:

- 1 ASSEMBLY IDENTIFIED WITH PART NUMBER AND DATE CODE, APPROXIMATELY AS SHOWN, OR IN OTHER APPROVED LOCATIONS AS OUTLINED IN ES-121. ORIENTATION OF THE RIVET CONTAINING PART NUMBER AND DATE CODE NOT IMPORTANT.
- 2. ASSEMBLY COMPLIES WITH STRENGTH REQUIREMENTS OF SAE STANDARD J839.
- 3. TIGHTEN MOUNTING FASTENERS TO THE FASTENER MANUFACTURER'S RECOMMENDED TORQUE VALUE; HOWEVER, DO NOT EXCEED 120 IN-LBS [13.6N-m].
- 4. WHEN MOUNTING LATCH, MOUNTING HOLE SIZE NOT TO EXCEED Ø.312 [7.92].
- 5. DIMENSIONS IN [] ARE IN MILLIMETERS FOR REFERENCE ONLY.
- 6. USE WITH TRIMARK'S Ø.675 [17.15] STRIKER BOLT.
- 7 CONTACT TO RELEASE POSITION APPROXIMATELY 5.0°. CONTACT TO MAX TRAVEL APPROXIMATELY 8.8°.



PRODUCT SUPPORT DRAWING
 Individual part dimensions are for reference only. Refer to individual part drawings for complete dimensions and specifications.

SPECIFICATION		DESCRIPTION		ITEM	PART NUMBER	DESCRIPTION	QUANTITY
DRAWN BY	MLH	4/25/02	MATERIAL		 500 Bailey Avenue New Hampton, Iowa 50659 U.S.A. Tel: 641-394-3188 Fax: 641-394-2392		
CHECKED BY	JRS	4/25/02	HEAT TREAT				
DESIGN ENG.	GCL		FINISH				
MFG. ENG.			PROJECT				
QUALITY ENG.			CUSTOMER		CUSTOMER PART NUMBER		This drawing and the information contained herein is the property of TriMark Corporation and shall not be used for any purpose without our written consent.
TOLERANCES UNLESS OTHERWISE SPECIFIED ASME Y14.5M-1994 DIMENSIONS ANGLES X.X ±.1 X° ±3° X.XX ±.03 X.X° ±1.0° X.XXX ±.010 X.XX° ±.50°			SIZE		PRODUCT CODE		PART NAME 050-0170, RH, 2POSN, M6X1, INSRLE
 INCH [METRIC]			C		E13 (050-0170)		SCALE FULL REVISION A PART NUMBER PRI8874
REPORT ERRORS TO ENGINEERING DEPARTMENT					DO NOT SCALE DRAWING		