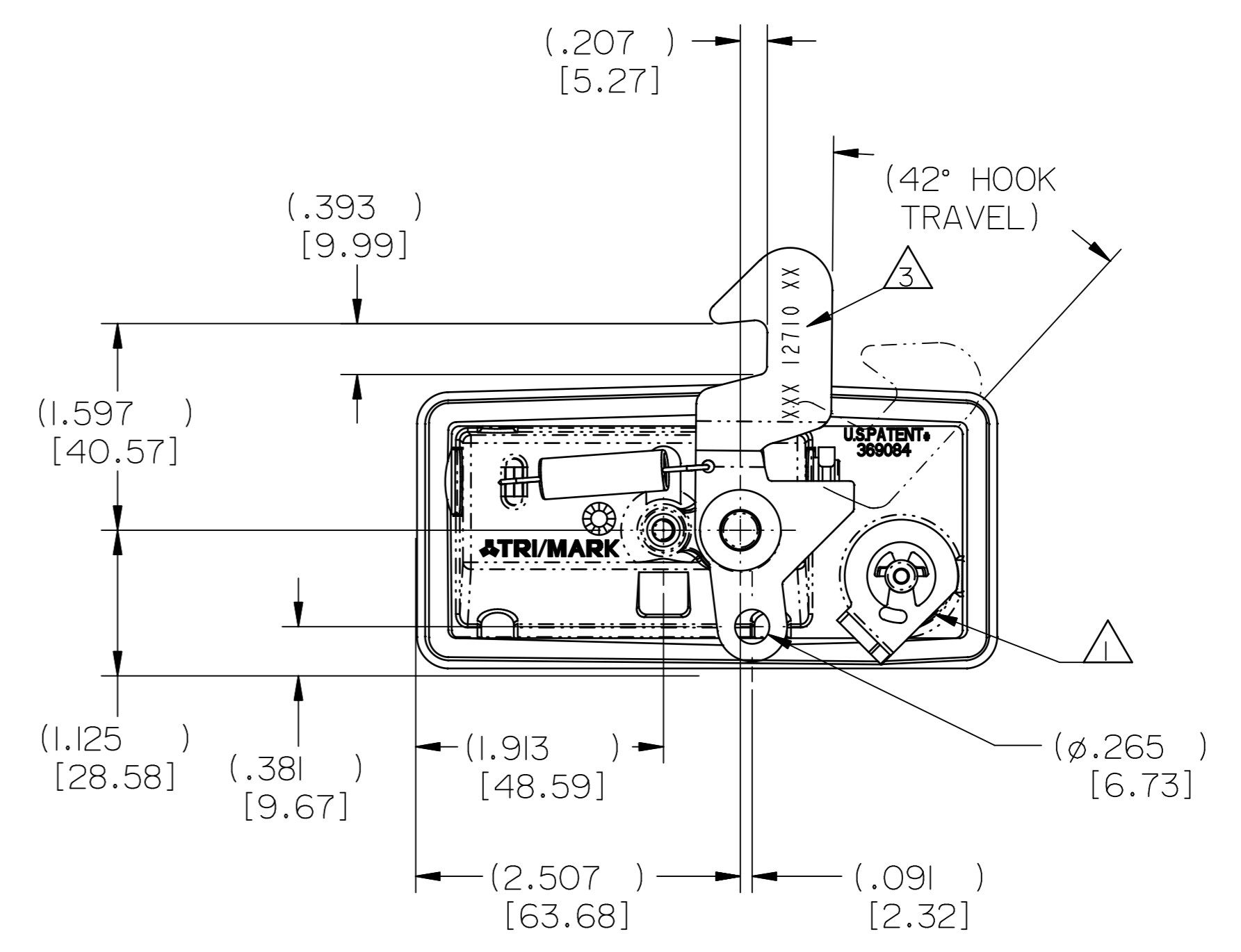
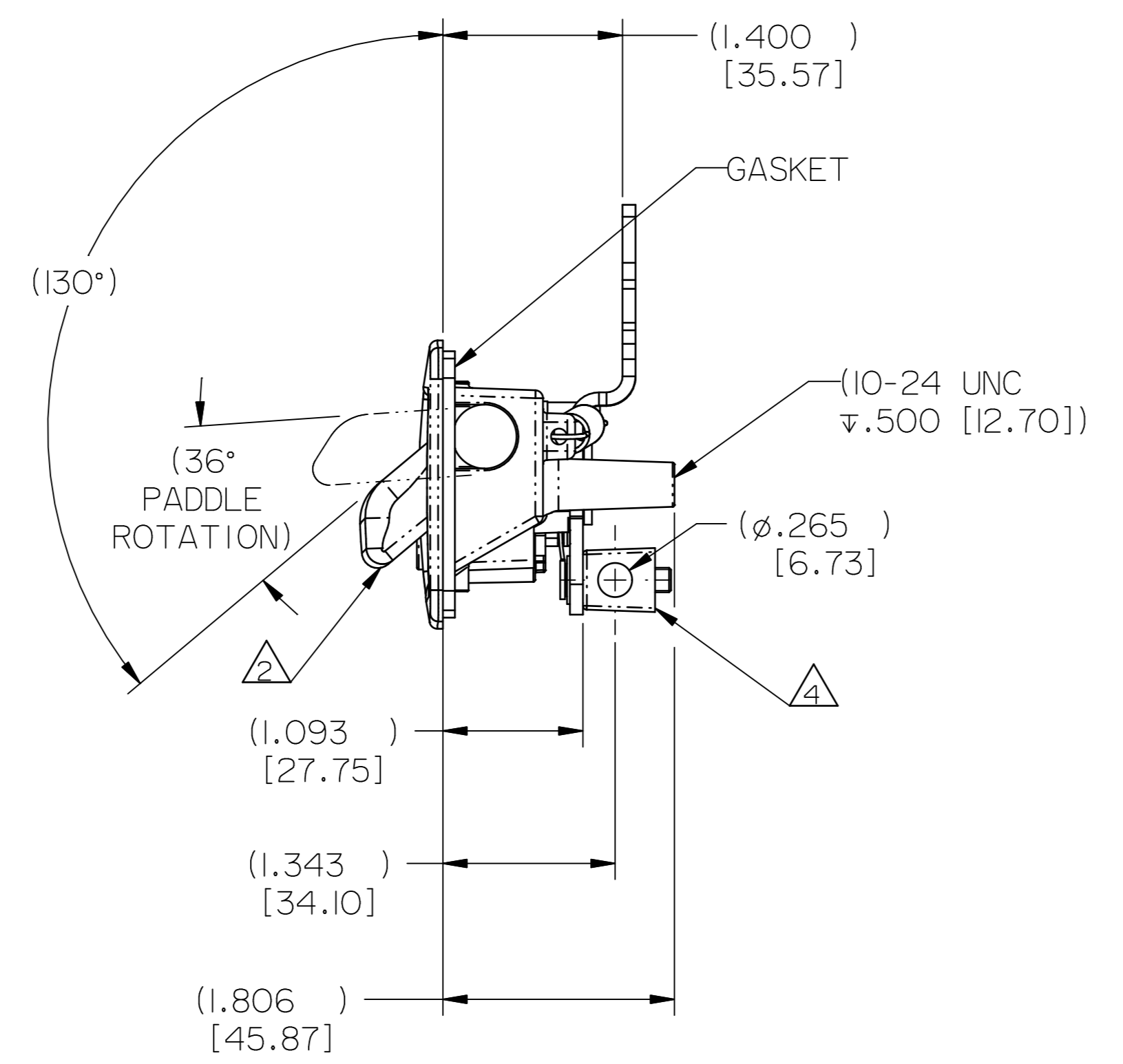
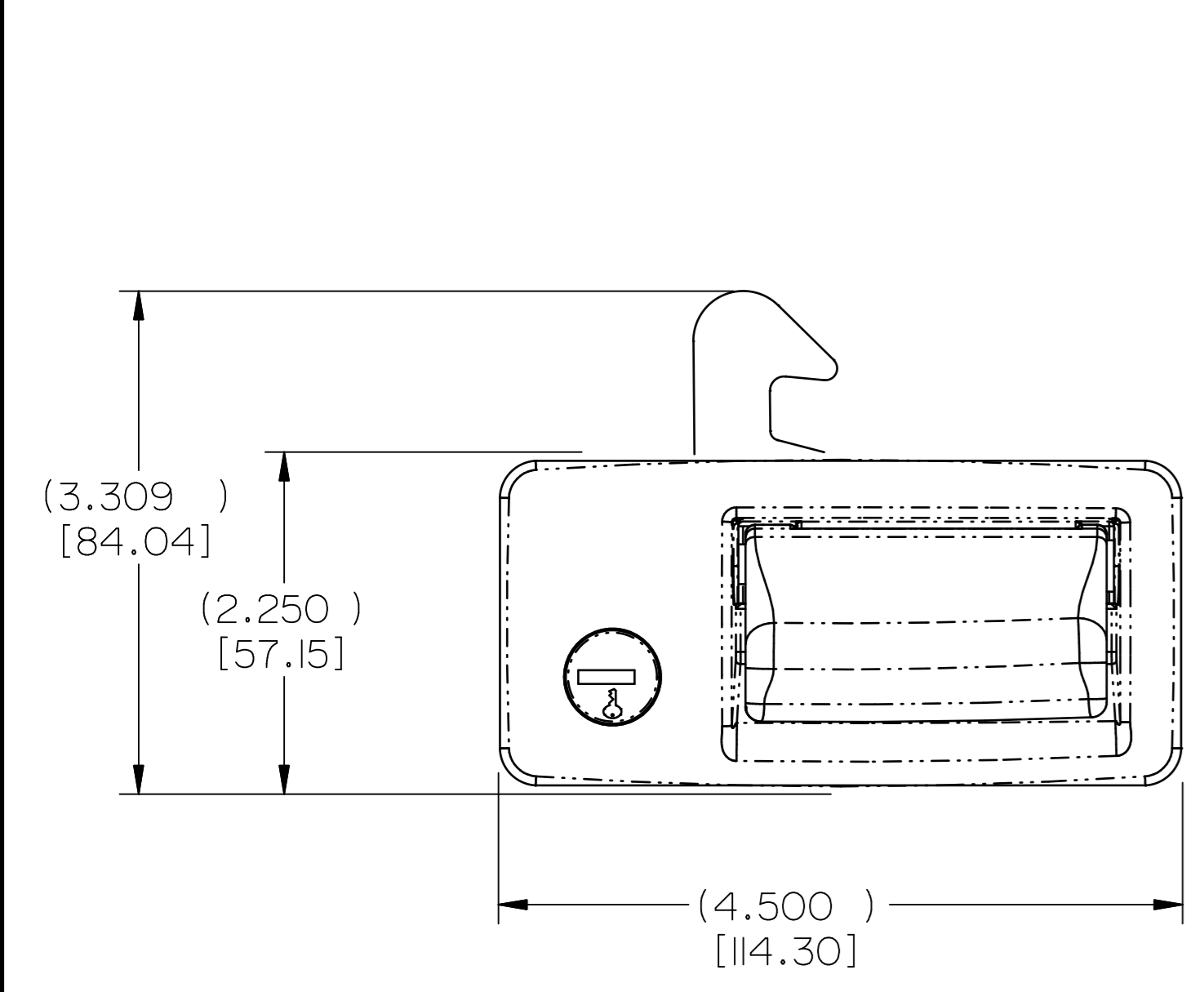
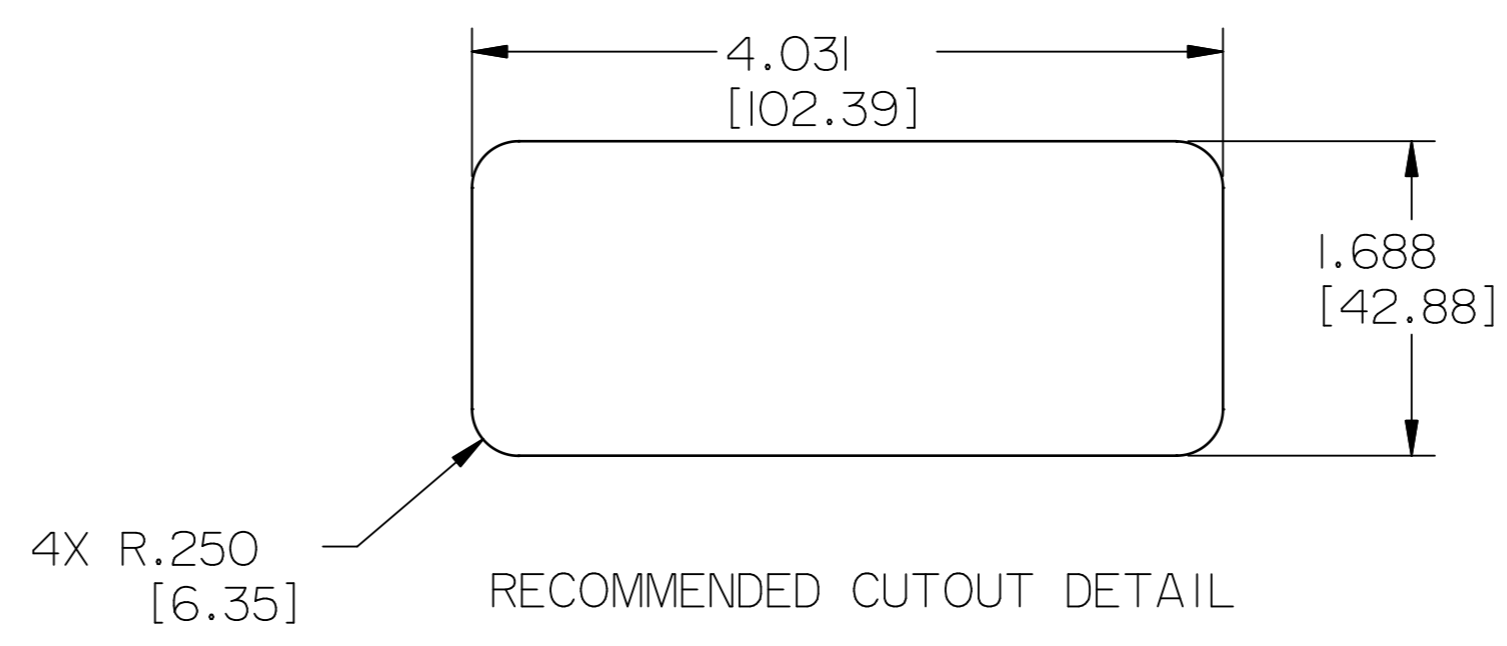


PART NO.	KEYCODE	COLLAR 4	FINISH	KEYS 5 (QTY)
12710-01	TM90I-TM950	YES	PAINT, BLACK, LOW GLOSS	YES (2)
12710-02	TM904	YES	PAINT, BLACK, LOW GLOSS	NO
12710-03	TM90I-TM950	NO	PAINT, BLACK, LOW GLOSS	YES (2)



NOTES:

- 1 ASSEMBLY SHOWN AND SHIPPED IN UNLOCKED POSITION.
- 2 PADDLE LOCKED RIGID WHEN ASSEMBLY IS IN LOCKED POSITION.
- 3 TRIMARK PART NUMBER AND DATE CODE.
- 4 COLLAR OPTIONAL. SEE TABLE FOR WHICH ASSEMBLIES HAVE COLLAR.
- 5 KEYS OPTIONAL. SEE TABLE FOR WHICH ASSEMBLIES HAVE KEYS.

030-1125 PADDLE HANDLE ASSEMBLY WITH HOOK

SPECIFICATION	DESCRIPTION	ITEM	PART NUMBER	DESCRIPTION	QUANTITY	
DRAWN BY: JRS 3/21/02	CHECKED BY: CRZ 3/21/02	MATERIAL				<p>500 Bailey Avenue New Hampton, Iowa 50659 U.S.A. Tel: 641-394-3188 Fax: 641-394-2392</p>
DESIGN ENG.	HEAT TREAT					
MFG. ENG.	FINISH					
QUALITY ENG.	SEE TABLE					
<p>INCH [METRIC]</p>		SIZE: D	PART WEIGHT	SURFACE AREA	PRODUCT CODE: C27 (030-1125)	
<p>REPORT ERRORS TO ENGINEERING DEPARTMENT</p>		DO NOT SCALE DRAWING		SCALE: FULL	REVISION: 0	
PART NAME: PDL HANDLE ASSY W/HOOK				PART NUMBER: PRI2710-XX		

This drawing and the information contained herein is the property of TriMark Corporation and shall not be used for any purpose without our written consent.