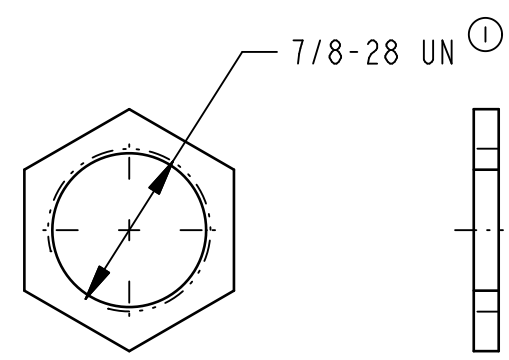
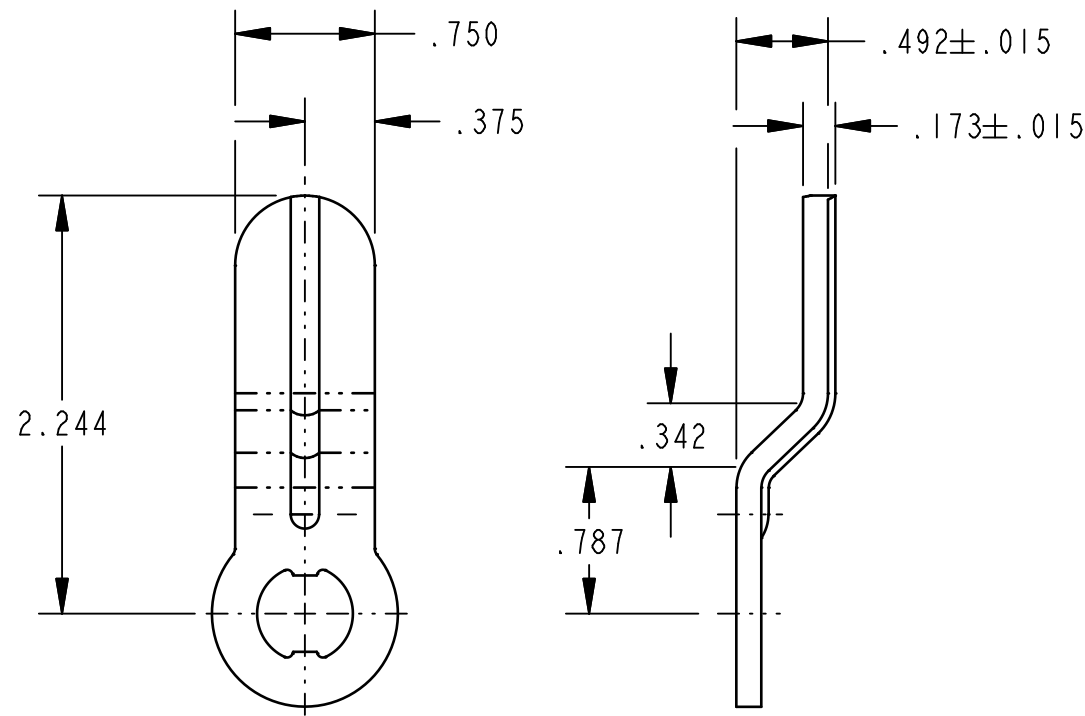
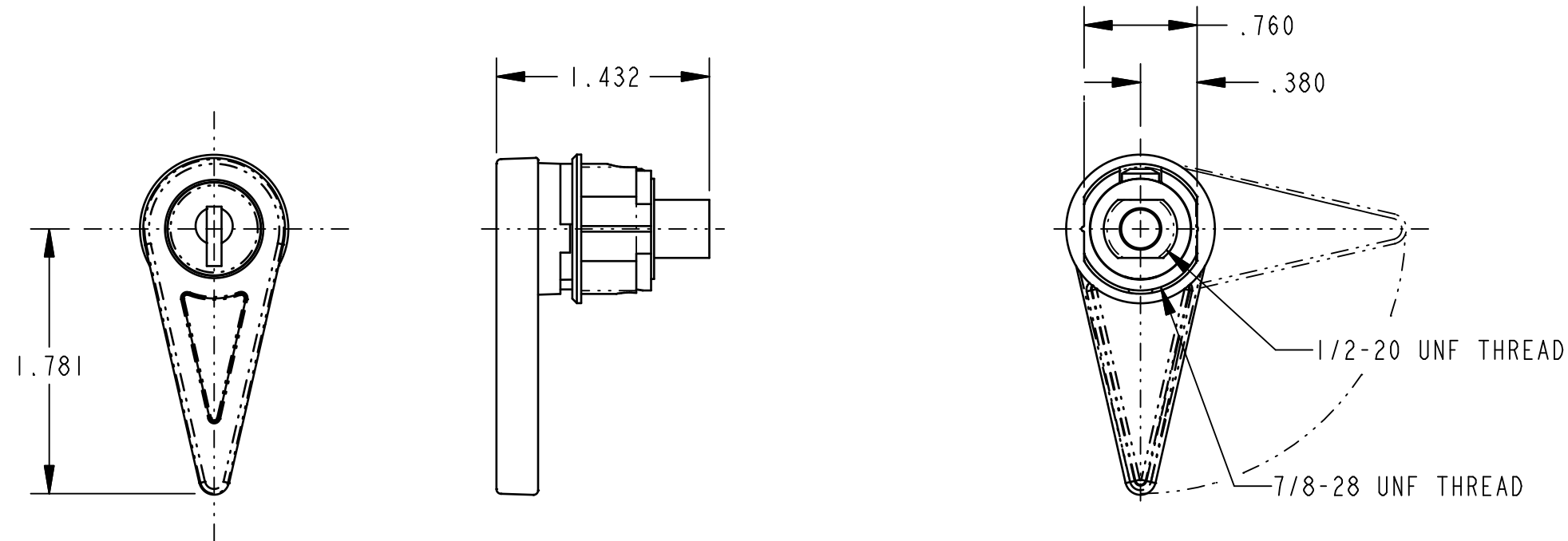
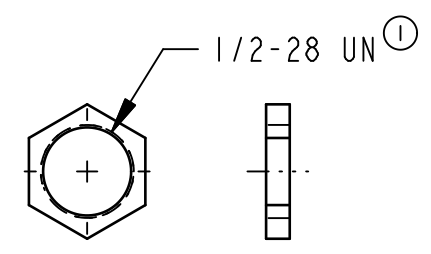


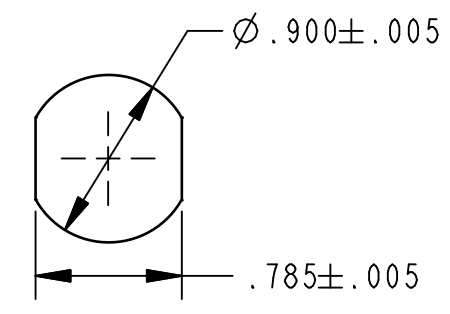
REV.	ECN	BY	CHKD	REVISION
1	10319	CML 1/12/98	JMH 1/12/98	UPDATED DISPLAY OF LKCYL; REVISED PART NAME; 7/8-28 UN WAS 7/8-28 UN-2B; 1/2- 28 UN WAS 1/2-28 UN-2B



ESCUTCHEON NUT



LOCKING ARM NUT



MOUNTING HOLE

NOTES:

1. MAXIMUM TORQUE 7/8-28 ESCUTCHEON NUT - 15 FT-LBS.
2. MAXIMUM TORQUE 1/2-20 ARM NUT - 40 IN-LBS [4.5 Nm].
3. UPON ASSEMBLY, TORQUE REQUIRED TO ROTATE HANDLE PAST DETENT IS 1.1 - 2.2 IN-LBS [0.12 - 0.25 Nm].

SPEC	DESCRIPTION	ITEM	PART NO.	DESCRIPTION	QTY.
DRAWN BY KPE 4/27/94	CHECKED BY CRZ 4/28/94	DESIGN ENG.	MFG. ENG.	QUALITY ENG.	
<p>TOLERANCES UNLESS OTHERWISE SPECIFIED</p> <p>APPROXIMATE DIMENSIONS</p> <p>INCH [METRIC]</p> <p>FORM 163-210 REV. 1.0 10/15/93</p>					
<p>FINISH</p> <p>PAINT, BLACK, MEDIUM GLOSS PER ES-106</p>			<p>HEAT TREAT</p>		
<p>PROJECT</p> <p>LA91021-1</p>		<p>CUSTOMER</p>		<p>CUSTOMER PART NO.</p>	
<p>SIZE</p> <p>C</p>		<p>PART WT.</p>		<p>SURFACE AREA</p>	
<p>PROJ CODE</p> <p>010-0700</p>		<p>PROD CODE</p> <p>010-0700</p>		<p>REPORT ERRORS TO ENGINEERING DEPT.</p>	
<p>DO NOT SCALE DRAWING</p>		<p>SCALE</p> <p>FULL</p>		<p>REV.</p> <p>1</p>	
<p>PART NO.</p> <p>PR12043</p>		<p>DESCRIPTION</p> <p>ASSY, LCH, TEARDROP, CH751, OF SCAM</p>		<p>QTY.</p>	



THIS DRAWING AND THE INFORMATION CONTAINED HEREIN IS THE PROPERTY OF TRI/MARK CORP. AND SHALL NOT BE USED FOR ANY PURPOSE WITHOUT OUR WRITTEN CONSENT.

PART NAME
ASSY, LCH, TEARDROP, CH751, OF SCAM

SCALE FULL
REV. 1
PART NO. PR12043