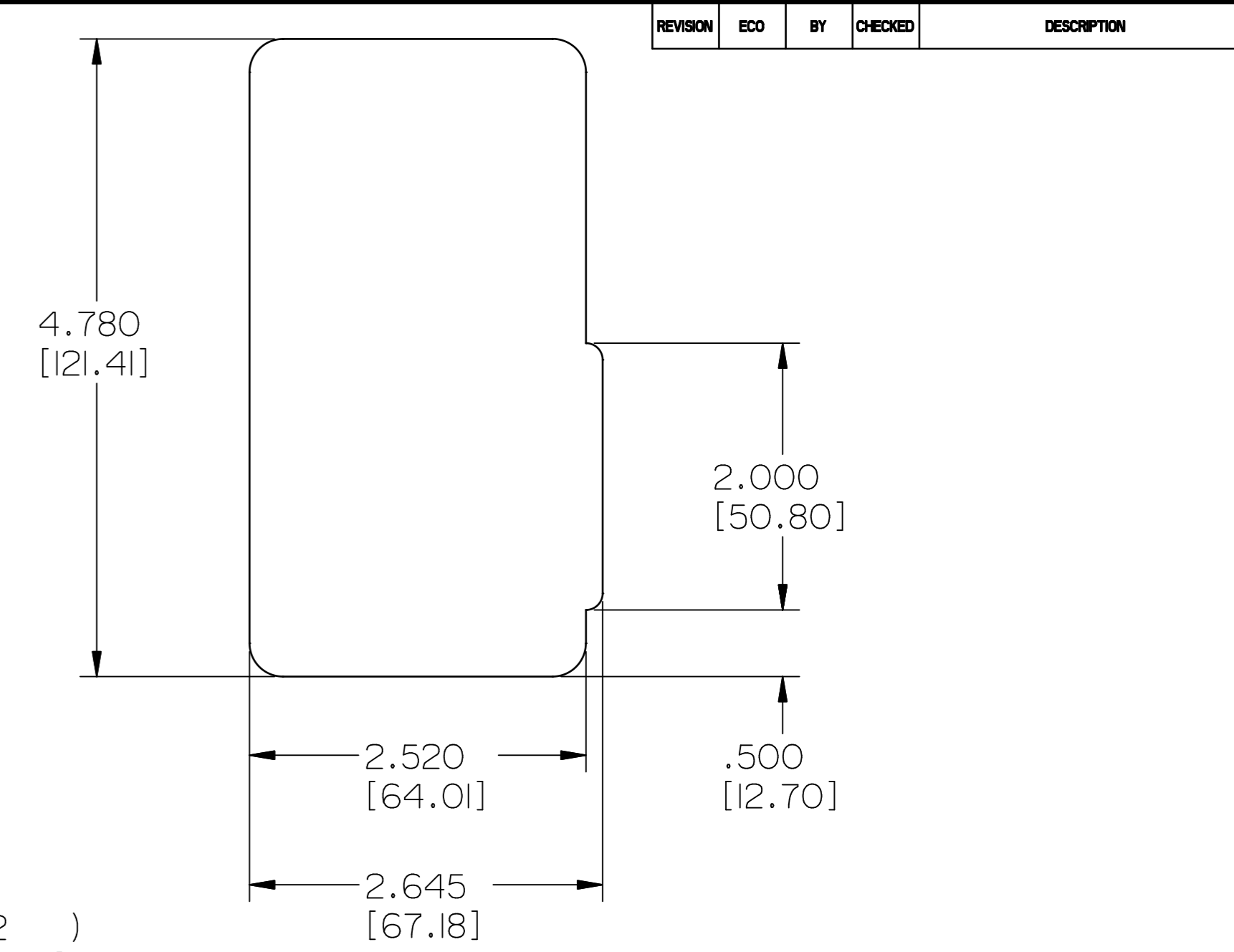
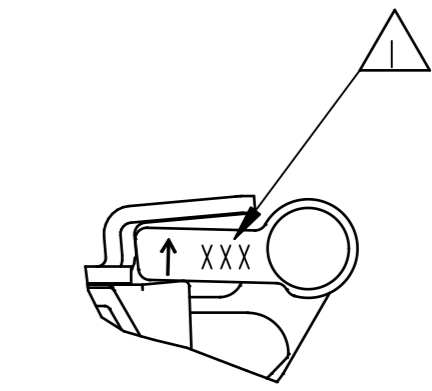
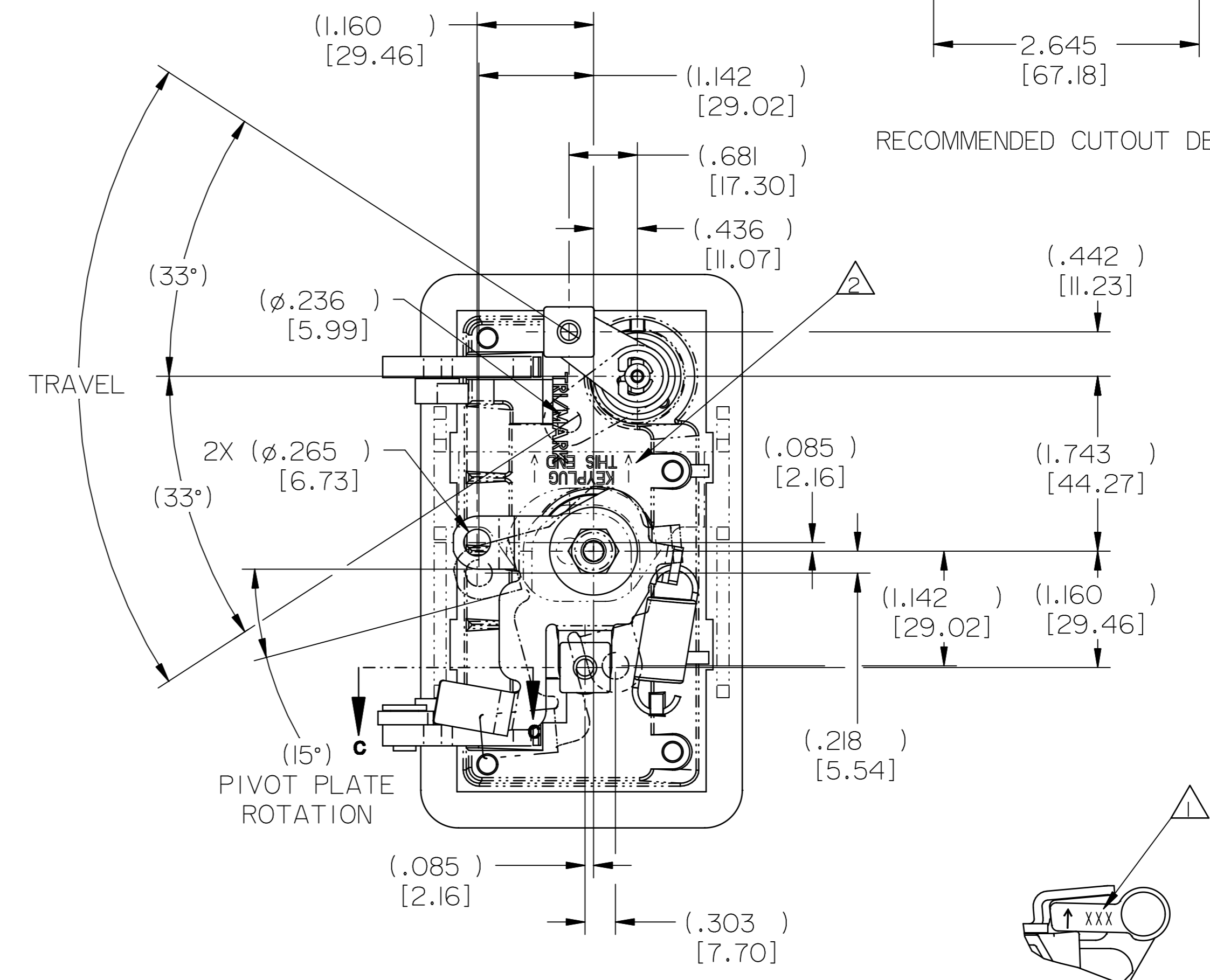
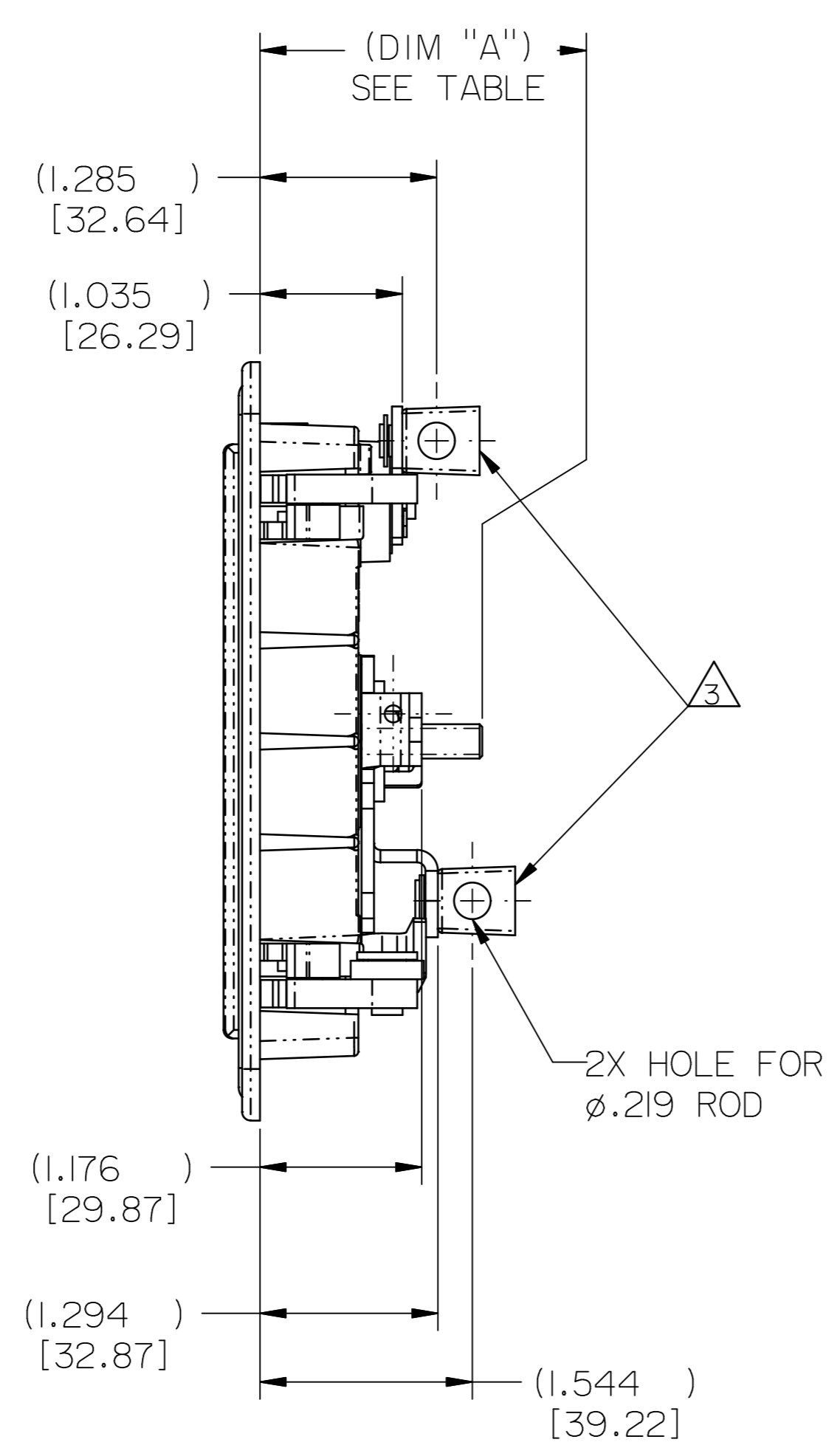
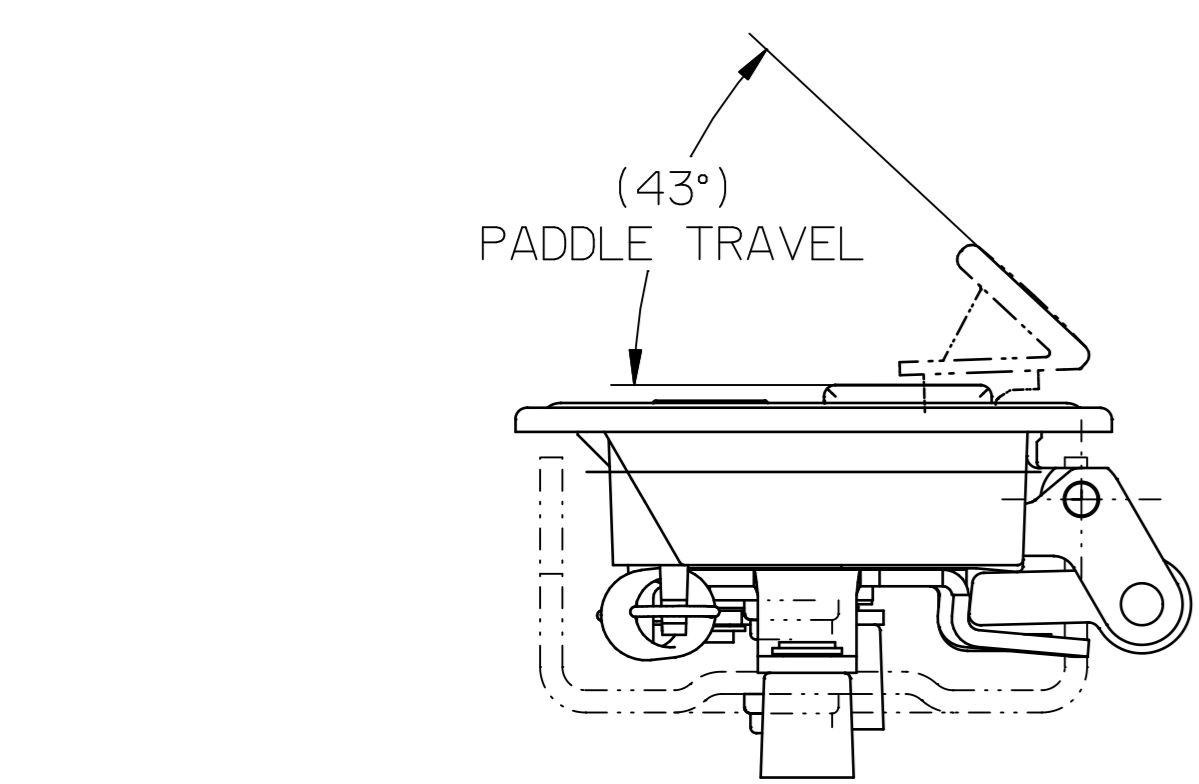
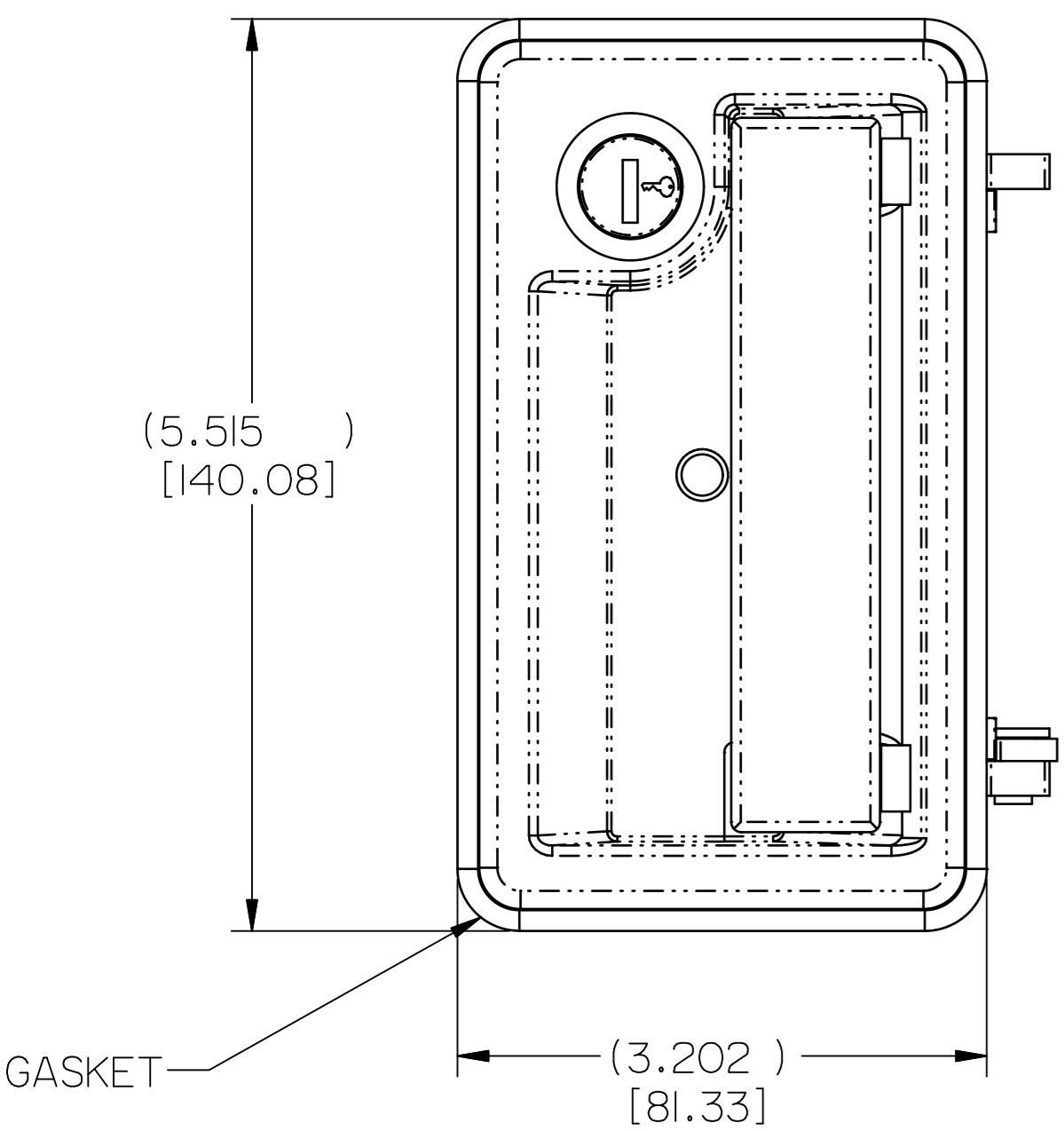


PART NO. PART NAME	FINISH	ROD COLLARS	DIM "A"	KEYS SUPPLIED YES/NO (QTY)
I1744-01	HSG: PAINT, BLACK, LOW GLOSS PDL: PLATE, COPPER-NICKEL-CHROME	NO	1.152	YES (2)
I1744-02	PAINT, BLACK, LOW GLOSS	NO	1.152	YES (2)
I1744-03	PAINT, BLACK, LOW GLOSS	NO	1.152	YES (2)
I1744-04	HSG: PAINT, BLACK, LOW GLOSS PDL: PLATE, COPPER-NICKEL-CHROME	NO	1.152	YES (2)
I1744-05	PAINT, BLACK, LOW GLOSS	NO	1.152	YES (2)
I1744-06	PAINT, BLACK, LOW GLOSS	YES	1.152	YES (2)
I1744-63	PLATE, COPPER-NICKEL-NICKEL-CHROME	NO	.902	YES (2)



RECOMMENDED CUTOUT DETAIL



SECTION C-C

- NOTES:
- 1 TRIMARK DATE CODE.
 - 2 PROPER ORIENTATION OF MOUNTING PLATE WITH RESPECT TO THE LOCKCYLINDER.
 - 3 ROD COLLARS OPTIONAL. SEE TABLE FOR WHICH ASSEMBLIES HAVE ROD COLLARS.

030-0400 PADDLE HANDLE ASSEMBLY

SPECIFICATION		DESCRIPTION		ITEM	PART NUMBER	DESCRIPTION	QUANTITY
DRAWN BY	JRS 3/14/02	MATERIAL					
CHECKED BY	CRZ 3/14/02	HEAT TREAT					
DESIGN ENG.		FINISH					
MFG. ENG.		PROJECT					
QUALITY ENG.		CUSTOMER					
TOLERANCES UNLESS OTHERWISE SPECIFIED		CUSTOMER PART NUMBER					
.005		PART WEIGHT					
.010		SURFACE AREA					
.015		PRODUCT CODE					
.020		REPORT ERRORS TO ENGINEERING DEPARTMENT					
.030		DO NOT SCALE DRAWING					
.040		SCALE					
.050		REVISION					
.060		PART NUMBER					
.070		FULL					
.080		PART NUMBER					
.090		PRI1744-XX					



This drawing and the information contained herein is the property of TriMark Corporation and shall not be used for any purpose without our written consent.

PART NAME: PADDLE HANDLE ASSEMBLY