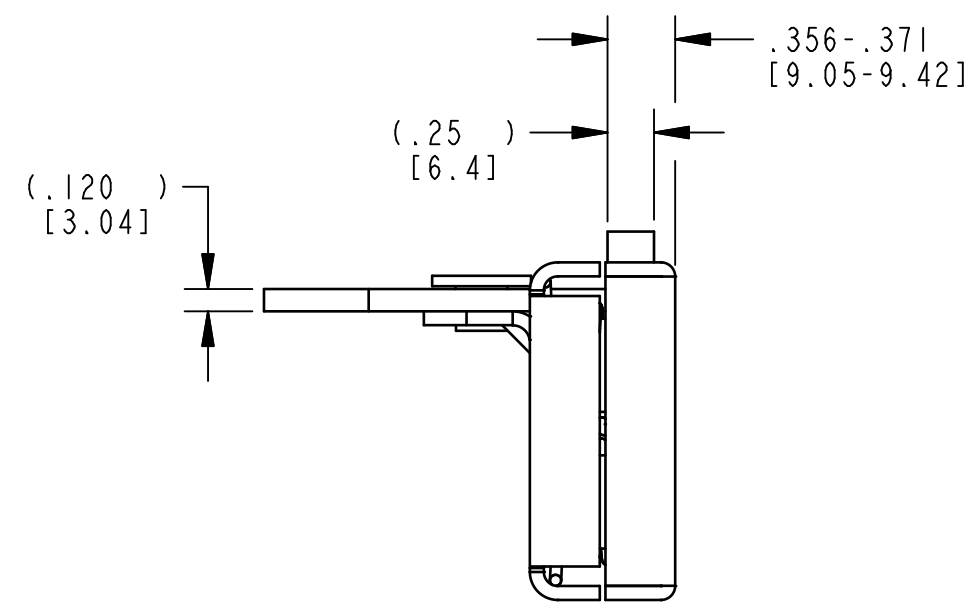
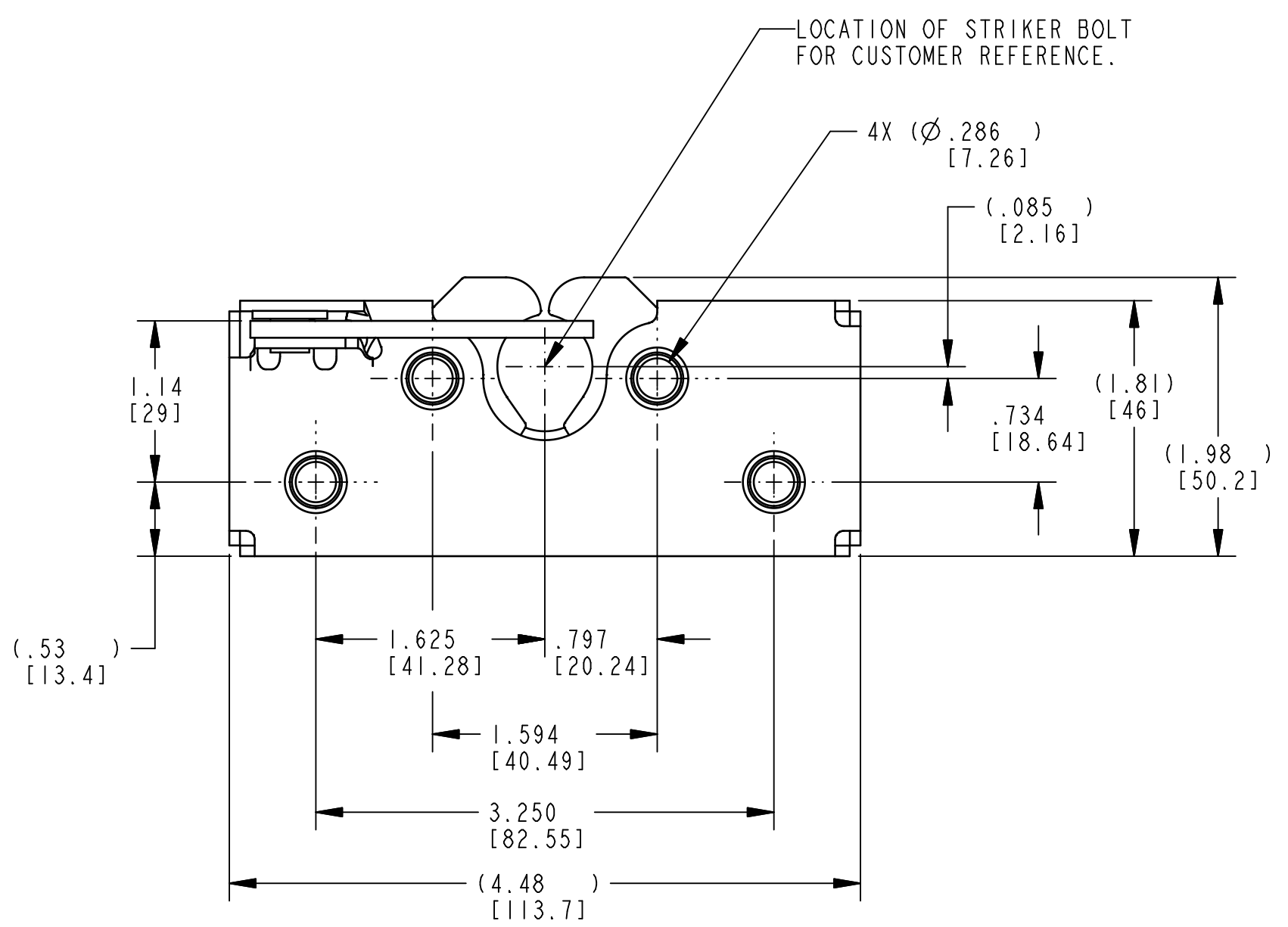




NOTES:

- 1 ASSEMBLY IDENTIFIED WITH PART NUMBER AND DATE CODE, APPROXIMATELY AS SHOWN, OR IN OTHER APPROVED LOCATIONS AS OUTLINED IN ES-121. ORIENTATION OF THE RIVET CONTAINING PART NUMBER AND DATE CODE NOT IMPORTANT.
- 2. ASSEMBLY COMPLIES WITH STRENGTH REQUIREMENTS OF SAE STANDARD J839.
- 3. WHEN MOUNTING LATCH, MOUNTING HOLE SIZE NOT TO EXCEED Ø.312 [7.92].
- 4. DIMENSIONS IN [ ] ARE IN MILLIMETERS FOR REFERENCE ONLY.
- 5. USE WITH TRIMARK'S Ø.675 [17.15] STRIKER BOLT.
- 6 FREE TRAVEL.
- 7 RELEASE POSITION.
- 8 MAXIMUM TRAVEL.
- 9 CONTACT POSITION (SHOWN).



**PRODUCT SUPPORT DRAWING**  
 Individual part dimensions are for reference only. Refer to individual part drawings for complete dimensions and specifications.

SPECIFICATION		DESCRIPTION		ITEM	PART NUMBER	DESCRIPTION	QUANTITY
DRAWN BY	MLH	4/25/02	MATERIAL		 500 Bailey Avenue New Hampton, Iowa 50659 U.S.A. Tel: 641-394-3188 Fax: 641-394-2392  This drawing and the information contained herein is the property of TriMark Corporation and shall not be used for any purpose without our written consent.		
CHECKED BY	JRS	4/25/02	HEAT TREAT				
DESIGN ENG.	GCL		FINISH				
MFG. ENG.			PROJECT				
QUALITY ENG.			CUSTOMER				
TOLERANCES UNLESS OTHERWISE SPECIFIED ASME Y14.5M-1994 DIMENSIONS ANGLES X.X ±.1 X° ±3° X.XX ±.03 X.X° ±1.0° X.XXX ±.010 X.XX° ±.50°			CUSTOMER PART NUMBER		PART NAME		
		SIZE	PART WEIGHT	SURFACE AREA	PRODUCT CODE	ASSY, DBLRTR, LH, .286, L	
REPORT ERRORS TO ENGINEERING DEPARTMENT				DO NOT SCALE DRAWING		SCALE	REVISION
						FULL	A
						PART NUMBER	
						PRI1449	