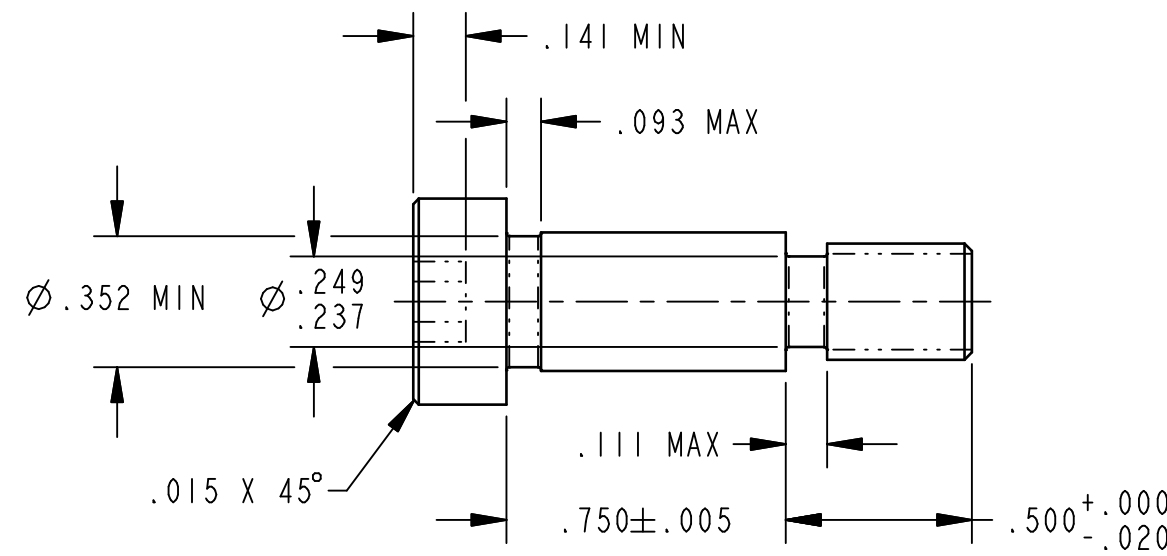
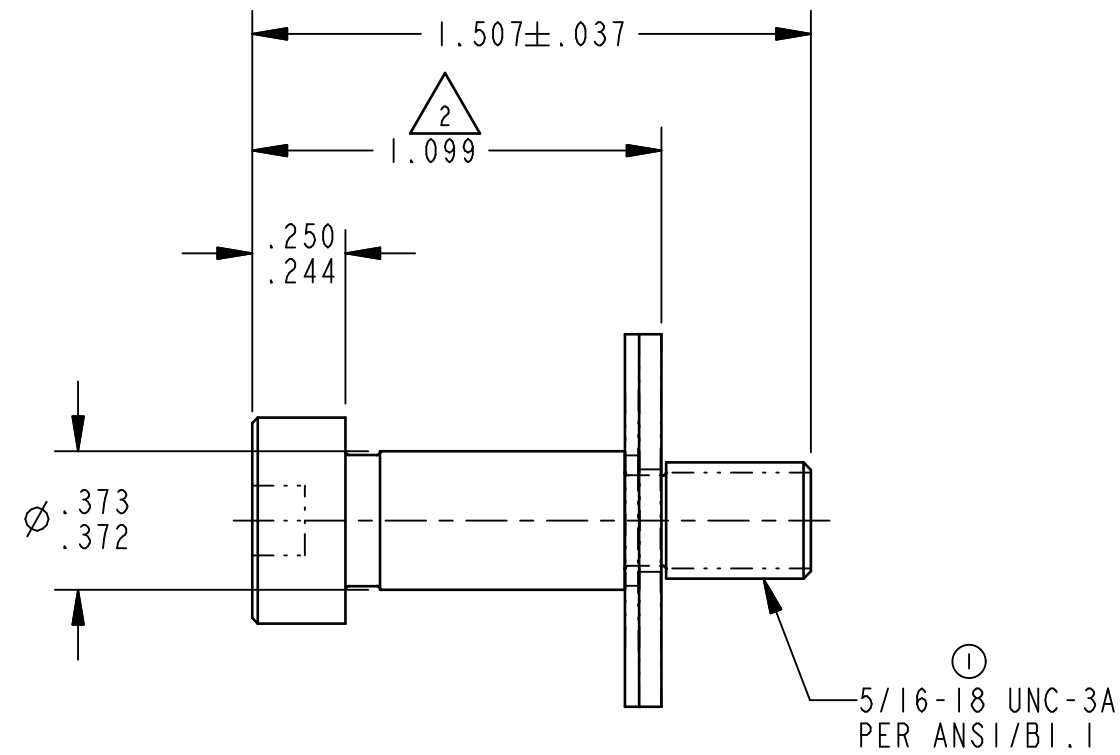
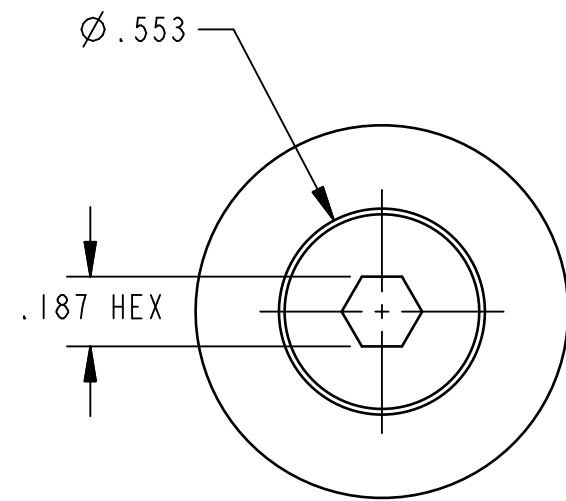
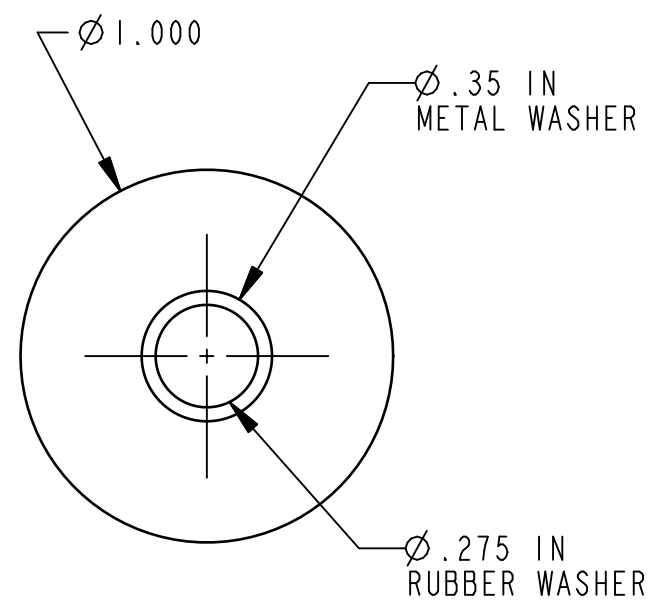


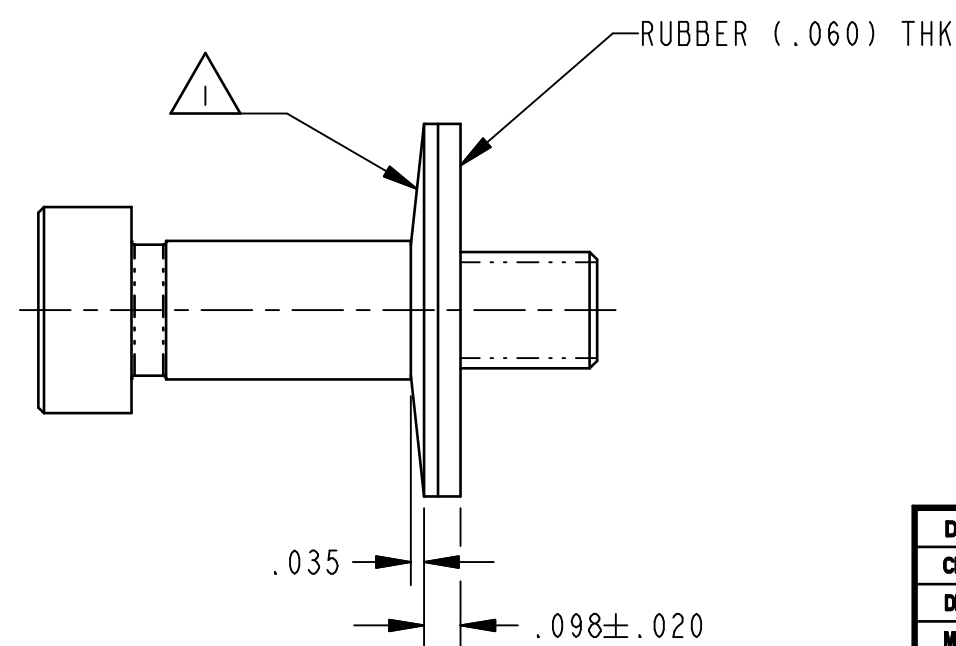
REV.	ECN	BY	CHKD	REVISION
0	RLSE	DA 8/19/97	BJP 8/19/97	RELEASED FOR PRODUCTION
1	10168	JJH 10/14/97	CML 10/15/97	5/16-18 UNC-3A PER ANSI/B1.1 WAS 5/16-18 UNC-2A
2	10651	TJZ 9/21/98	DA 9/21/98	REVISED AND REDRAWN



WASHER NOT SHOWN



BOLT NOT SHOWN



DIMENSIONS	ANGLES
X.X = $\pm .1$	$X^\circ = \pm 3^\circ$
X.XX = $\pm .03$	
X.XXX = $\pm .015$	

NOTES:

- 1 WASHER ORIENTATION IMPORTANT.
- 2 WASHER SHOWN IN INSTALLED POSITION.
3. WASHER, STL, GALVANIZED, ASTM A653, 20 GA, WITH ATTACHED RUBBER WASHER, (.060)THK.
4. BOLT CONFORMS TO GRADE 5 (REFERENCE SAE J429) R 25-34 REQUIREMENTS MIN. SUPPLIER MUST PROVIDE CERTIFICATION OF ANALYSIS FOR CHEMICAL COMPOSITION AND HEAT TREAT.

SPEC	DESCRIPTION	ITEM	PART NO.	DESCRIPTION	QTY.																		
DRAWN BY DA 8/19/97	MATERIAL SEE NOTES 3 & 4																						
CHECKED BY BJP 8/19/97	HEAT TREAT SEE NOTE 4																						
DESIGN ENG. WAE 8/19/97	FINISH PLATE, ZINC/COAT, CHROMATE, YELLOW PER ES-104A																						
MFG. ENG.	PROJECT 96115	CUSTOMER	CUSTOMER PART NO.																				
QUALITY ENG.	SIZE C	PART WT.	SURFACE AREA	PROD CODE 070-0300																			
<table border="1"> <tr> <td>FORM 163-210</td> <td>REV. 1.0</td> <td>10/15/93</td> <td>REPORT ERRORS TO ENGINEERING DEPT.</td> <td>DO NOT SCALE DRAWING</td> <td></td> </tr> </table>						FORM 163-210	REV. 1.0	10/15/93	REPORT ERRORS TO ENGINEERING DEPT.	DO NOT SCALE DRAWING													
FORM 163-210	REV. 1.0	10/15/93	REPORT ERRORS TO ENGINEERING DEPT.	DO NOT SCALE DRAWING																			
<table border="1"> <tr> <td colspan="2"> TRI/MARK AN EMPLOYEE-OWNED CORPORATION Industrial Park New Hampton, Iowa 50659 Telephone: 515-394-3188 Fax: 515-394-2392 </td> <td colspan="4"> THIS DRAWING AND THE INFORMATION CONTAINED HEREIN IS THE PROPERTY OF TRI/MARK CORP. AND SHALL NOT BE USED FOR ANY PURPOSE WITHOUT OUR WRITTEN CONSENT. </td> </tr> <tr> <td colspan="6">PART NAME BOLT/WSHR 1.111 SHLDR 5/16-18</td> </tr> <tr> <td>SCALE 2:1</td> <td>REV. 2</td> <td colspan="4">PART NO. 15434-01</td> </tr> </table>						TRI/MARK AN EMPLOYEE-OWNED CORPORATION Industrial Park New Hampton, Iowa 50659 Telephone: 515-394-3188 Fax: 515-394-2392		THIS DRAWING AND THE INFORMATION CONTAINED HEREIN IS THE PROPERTY OF TRI/MARK CORP. AND SHALL NOT BE USED FOR ANY PURPOSE WITHOUT OUR WRITTEN CONSENT.				PART NAME BOLT/WSHR 1.111 SHLDR 5/16-18						SCALE 2:1	REV. 2	PART NO. 15434-01			
TRI/MARK AN EMPLOYEE-OWNED CORPORATION Industrial Park New Hampton, Iowa 50659 Telephone: 515-394-3188 Fax: 515-394-2392		THIS DRAWING AND THE INFORMATION CONTAINED HEREIN IS THE PROPERTY OF TRI/MARK CORP. AND SHALL NOT BE USED FOR ANY PURPOSE WITHOUT OUR WRITTEN CONSENT.																					
PART NAME BOLT/WSHR 1.111 SHLDR 5/16-18																							
SCALE 2:1	REV. 2	PART NO. 15434-01																					