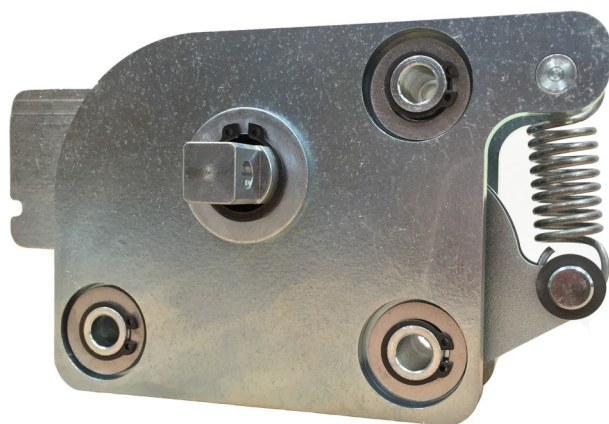
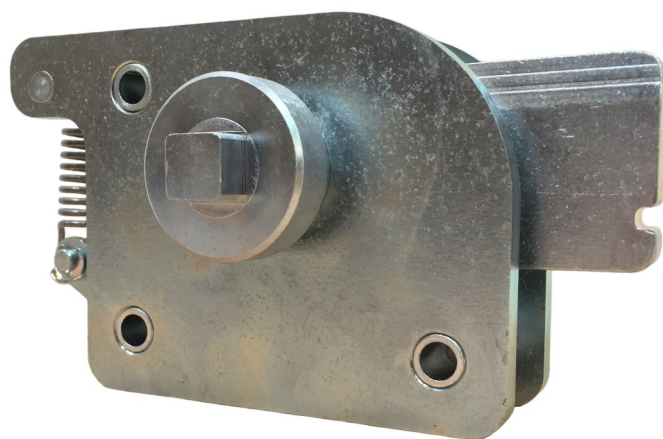


140-0100
TriGuard Heavy Duty
Cam Lock



This heavy duty cam lock module is designed to be located in high stress areas and used as a primary mechanism for securing personnel doors, rear doors, hatches and windows or as a secondary mechanism in conjunction with a primary door latch. Providing additional strength and security, it can be used singularly or in multiples and can be operated and controlled via rods or cables from a central release such as TriMark's 010-1000 Inside Release Handle.



Global Locations:

TriMark Corporation
500 Bailey Avenue
P.O. Box 350
New Hampton, Iowa 50659
United States
Tel: 641-394-3188
Fax: 641-394-2392
1-800-447-0343
www.trimarkcorp.com

TriMark Europe
Unit 3
Sence Court
Bardon Hill
Coalville LE67 1GZ
United Kingdom
Tel: +44(0)1530 512460
Fax: +44(0)1530 512461
www.trimarkeu.com

TriMark (Xuzhou)
Building A5 Jingwu Road
Xuzhou Economic
Development Zone
Xuzhou, Jiangsu
221004 PR China
Tel: +86 516 8773 0018
Fax: +86 516 8773 0058
www.trimarkcn.com



TriMark. Interactive. Product. Selector



TriMark



TriMark Corporation



TriMark Corporation

FEATURES/BENEFITS:

- Heavy duty modular construction is received fully assembled and tested
- Integrated detent holds the cam in 90 degree orientations
- Square drive detail allows for interior handle attachment and exterior emergency release

AVAILABLE:

- Clockwise and counter-clockwise rotation to lock (clockwise rotation shown)
- Customization features available
- Please inquire - special cases and mounting details

MATERIAL:

- High strength steel construction
- Heat treated cam and cross shaft

FINISH:

- Zinc plated, clear chromate steel components

INSTALLATION:

- Easy to install, module mounts with (3) M8 X 1.25 Class 8.8 fasteners
- Tighten to the manufacturers' recommended torque value
- For best results, lock cam to have minimal clearance to the door frame 1.0mm-2.0mm (0.040-0.080")

Individual part dimensions are for reference only. Refer to individual part drawings for complete dimensions, specifications, and installation procedures. Engineering assistance and application drawings are available.



For more information visit
www.trimarkcorp.com

