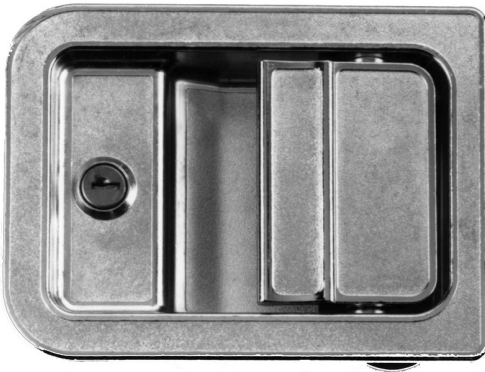


030-0300  
Entrance Door  
Hardware Set



**DESIGNED FOR:**

- On-highway entrance door applications

**FEATURES/BENEFITS:**

- Inside lock provides override if outside paddle should be locked
- Inside "L" handle provides door closure feature
- Manually operated safety dead bolt
- Two rotor - two stage rotary door latch with primary and secondary latching positions



**TriMark Corporation**

500 Bailey Avenue  
P.O. Box 350  
New Hampton, Iowa 50659  
United States  
Tel: 641-394-3188  
Fax: 641-394-2392  
1-800-447-0343  
www.trimarkcorp.com



**TriMark Europe**

Cedar Court  
Walker road  
Bardon Hill  
Coalville LE67 1TU  
United Kingdom  
Tel: +44(0)1530 512460  
Fax: +44(0)1530 512461  
www.trimarkeu.com





# 030-0300 Entrance Door Hardware Set

### AVAILABLE:

- Keyed random
- Right or left hand configurations (right hand shown)

### INSTALLATION:

- (3) #10-24 UNC mounting screws (included)
- (4) 1/4-20 UNC mounting fasteners (included)

### MATERIAL:

- Exterior housing and paddle, interior cover plate and "L" handle: die cast zinc alloy
- Rotors: heat treated, smooth edge stamped steel

### FINISH:

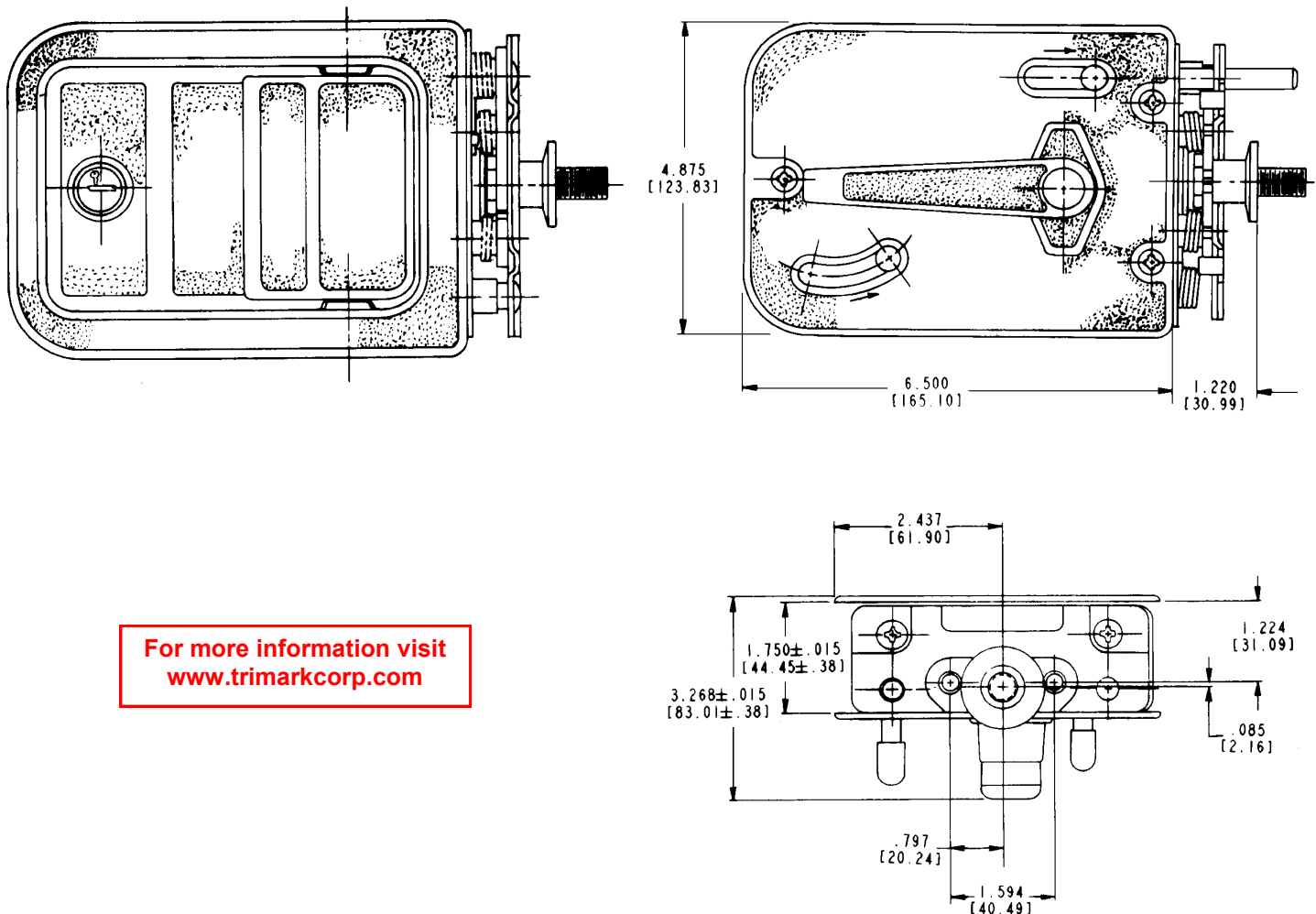
- Copper-nickel-chrome plated
- Black powder coated

### INTERNAL LUBRICATION:

- Oven-cured dry lubricant is applied at factory on all critical moving parts
- Additional lubrication to be applied in the field if required.

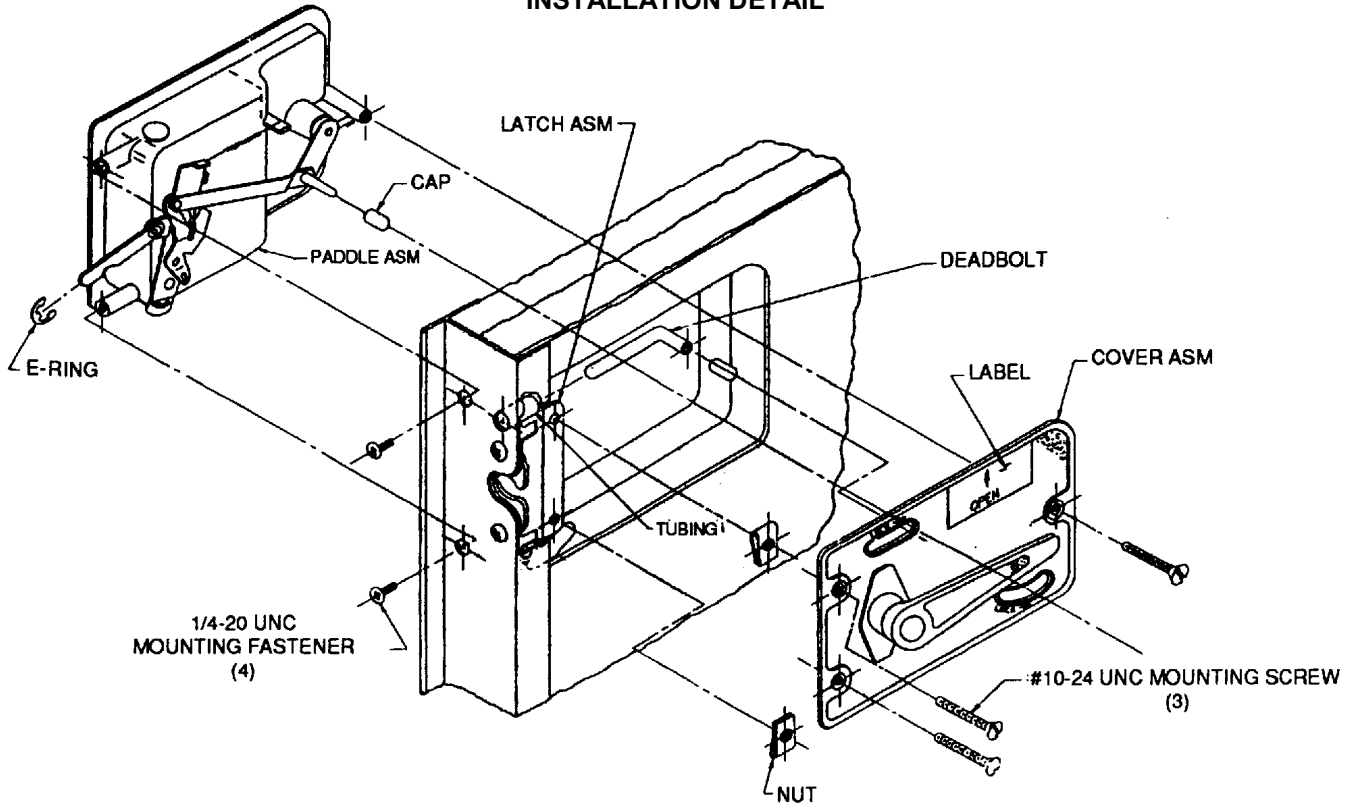
### FMVSS 206 APPROVED WHEN TESTED IN ACCORDANCE WITH SAE J839b

Individual part dimensions are for reference only. Refer to individual part drawings for complete dimensions, specifications, and installation procedures. Engineering assistance and application drawings are available.



For more information visit  
[www.trimarkcorp.com](http://www.trimarkcorp.com)

### INSTALLATION DETAIL



### RECOMMENDED DOOR CUT-OUT DETAIL

